

Volume 13, Issue 8  
October 17, 2021

# Mixed QuarterFinal Results

1	<a href="#">Rosenthal - wins tie</a>	269	13	27	33	45	33	36	51	31
8	<a href="#">Xu</a>	149	29	20	29	8	16	15	20	12
2	<a href="#">Moss</a>	237	19	68	21	28	24	45	32	
7	<a href="#">Kolesnik - wins tie</a>	143	4	16	38	34	23	14	14	wd
3	<a href="#">Rubenstein</a>	235	21	31	37	15	57	35	11	28
6	<a href="#">Henner - wins tie</a>	202	14	24	30	43	24	21	27	19
4	<a href="#">Lewis - wins tie</a>	196	26	9	37	29	31	38	26	wd
5	<a href="#">Donner</a>	286	36	45	49	42	43	46	25	

**Today's Matches:**  
**USA1**  
**Rosenthal v Donner**  
**Moss v Rubinstein**  
  
**USA2**  
**Lewis v Xu**  
**Henner v Kolesnik**

**USBF President**  
Brad Moss

**USBF Vice President**  
Kate Aker

**USBF COO & Secretary**  
Jan Martel

**USBF CFO & Treasurer**  
Stan Subeck

**USBF Recorder**  
Jack Oest

**Director**  
McKenzie Myers  
Chris Wiegand  
Will Watson (Senior Online)

**Tournament Organizer**  
Jan Martel

**Software Expert**  
Al Hollander

**VuGraph Organizer**  
Chris Wiegand

**Appeals Administrators**  
Suzi Subeck, Chairman  
Bill Arlinghaus  
Martha Katz

**Appeals Panel:**  
Cheri Bjerkan  
Mark Feldman  
Ron Gerard  
Marty Hirschman  
Rich DeMartino  
Ralph Katz  
Michael Kamil  
Kerri Sanborn  
Danny Sprung  
Joann Sprung

**Bulletin Editor**  
Suzi Subeck

**Photographer**  
Peg Kaplan

**Hospitality Chair**  
Julie Arbit  
Christian Jolly  
Evvie Gilbert  
Maya Alela

UNITED STATES BRIDGE CHAMPIONSHIPS  
 "Trials" and Tribulations—Mixed USBC

# MUSBC Teams Entered

## Alphabetical Order

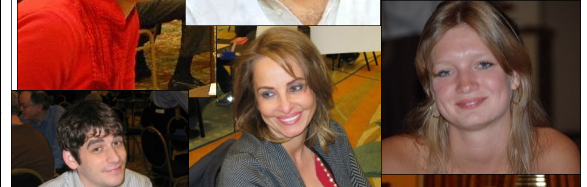
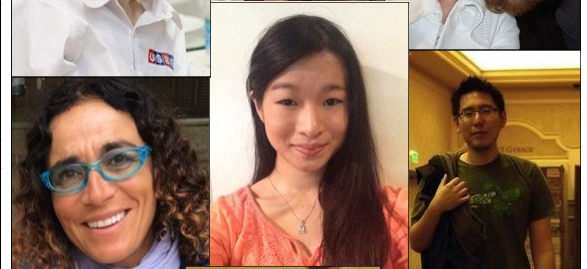
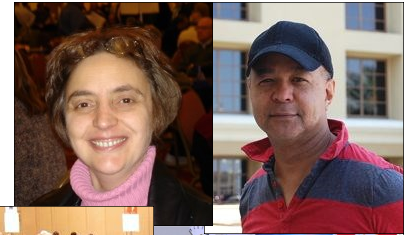
<b>Bauer</b>	Tracey Bauer, Capt John McAllister George Jacobs	Howard Parker Lilly Justman
<b>Donner</b>	Gary Donner, Capt Zachary Grossack Joe Grue	Sandra Rimstedt Giorgia Botta Anam Tebha
<b>Hammond</b>	Nicolas Hammond, Capt Jacqueline Chang	Kristen Onsgard Eric Gettleman
<b>Henner</b>	Christal Henner, Capt Adam Wildavsky Doug Doub	Sheila Gabay Yiji Starr Uday Ivatury
<b>Hinze</b>	Greg Hinze, Capt Allison Howard [KO] Owen Lien	Kay Enfield Mike Cappelletti [KO] May Sakr
<b>Kolesnik</b>	Alex Kolesnik, Capt Cheryl Mandala Sally Woolsey	Lynne Feldman Yul Inn Kit Woolsey
<b>Lewis</b>	Paul Lewis, Capt Mark Itabashi Ljudmila Kamenova	Linda Lewis Disa Eythorsdottir Ron Smith
<b>Moss</b>	Sylvia Moss, Capt Brad Moss [KO] Kevin Dwyer	Roger Lee Bronia Jenkins Jenny Wolpert [RR] John Hurd
<b>Rosenthal</b>	Andrew Rosenthal, Capt Chris Willenken Eldad Ginossar	Debbie Rosenberg Migry Campanile Dana Berkowitz
<b>Rubenstein</b>	Stewart Rubenstein, Capt Adam Grossack Joel Wooldridge	Chris Parker Irina Levitina Janice Molson
<b>Watson</b>	Will Watson, Capt Mark Aquino	Geeske Joel Selen Hotamisligil
<b>Xu</b>	Finn Kolesnik Cynthia Huang (KO) Anne Brenner [KO] Karen McCallum Michael Xu, NPC	Kevin Rosenberg Dave Caprera [RR] JoAnna Stansby



# Face-to-Face Schaumburg I

## Tournament Schedule

DAY	DATE	TIME - CDT	BOARDS
<b>QUARTER-FINAL</b>			
THURSDAY	OCT. 14	8:00 PM	CAPTAINS' MEETING WITH DIC (ON ZOOM)
FRIDAY	OCT. 15	10:00 - 12:10	SEGMENT 1 BOARDS 1-15
		12:25 - 2:35	SEGMENT 2 BOARDS 16-30
		3:45 - 5:55	70 MINUTE LUNCH BREAK
		6:10 - 8:20	SEGMENT 3 BOARDS 31-45 SEGMENT 4 BOARDS 46- 60
SATURDAY	OCT. 16	10:00 - 12:10	SEGMENT 5 BOARDS 61-75
		12:25 - 2:35	SEGMENT 6 BOARDS 76-90
		3:45 - 5:55	70 MINUTE LUNCH BREAK
		6:10 - 8:20	SEGMENT 7 BOARDS 91-105 SEGMENT 8 BOARDS 106-120
<b>SEMI-FINAL &amp; USA2 STAGE 1</b>			
SUNDAY	OCT. 17	10:00 - 12:10	SEGMENT 1 BOARDS 1-15
		12:25 - 2:35	SEGMENT 2 BOARDS 16-30
		3:45 - 5:55	70 MINUTE LUNCH BREAK
		6:10 - 8:20	SEGMENT 3 BOARDS 31-45 SEGMENT 4 BOARDS 46- 60
MONDAY	OCT. 18	10:00 - 12:10	SEGMENT 5 BOARDS 61-75
		12:25 - 2:35	SEGMENT 6 BOARDS 76-90
		3:45 - 5:55	70 MINUTE LUNCH BREAK
		6:10 - 8:20	SEGMENT 7 BOARDS 91-105 SEGMENT 8 BOARDS 106-120
<b>FINAL &amp; USA2 QUARTERFINAL &amp; SEMIFINAL</b>			
TUESDAY	OCT. 19	10:00 - 12:10	SEGMENT 1 BOARDS 1-15
		12:25 - 2:35	SEGMENT 2 BOARDS 16-30
		3:45 - 5:55	70 MINUTE LUNCH BREAK
		6:10 - 8:20	SEGMENT 3 BOARDS 31-45 SEGMENT 4 BOARDS 46- 60
WEDNESDAY	OCT. 20	10:00 - 12:10	SEGMENT 5 BOARDS 61-75
		12:25 - 2:35	SEGMENT 6 BOARDS 76-90
		3:45 - 5:55	70 MINUTE LUNCH BREAK
		6:10 - 8:20	SEGMENT 7 BOARDS 91-105 SEGMENT 8 BOARDS 106-120
<b>USA2 FINAL</b>			
THURSDAY	OCT. 21	10:00 - 12:10	SEGMENT 1 BOARDS 1-15
		12:25 - 2:35	SEGMENT 2 BOARDS 16-30
		3:45 - 5:55	70 MINUTE LUNCH BREAK
		6:10 - 8:20	SEGMENT 3 BOARDS 31-45 SEGMENT 4 BOARDS 46- 60
FRIDAY	OCT. 22	10:00 - 12:10	SEGMENT 5 BOARDS 61-75
		12:25 - 2:35	SEGMENT 6 BOARDS 76-90
		3:45 - 5:55	70 MINUTE LUNCH BREAK
		6:10 - 8:20	SEGMENT 7 BOARDS 91-105 SEGMENT 8 BOARDS 106-120



Why do you never see elephants hiding in trees? Because they're so good at it!

How does a penguin build its house? Igloos it together!

Why don't skeletons ever go trick or treating? Because they have *no body* to go with!

What's a ninja's favorite type of shoes? Sneakers!

What do Santa's elves listen to ask they work? Wrap music!

Did you hear about the bacon cheeseburger who couldn't stop telling jokes? It was on a roll.

Why couldn't the green pepper practice archery? Because it didn't habanero.

What do you call a sad cup of coffee? Depresso

## Puns...

## Hospitality Suite

---

Because of Covid, we won't be able to provide the full, wonderful hospitality we have in the past, but we will do what we can.

Hosts Evvie Gilbert and Maya Alela for the Open and Women's and Julie Arbit and Christian Jolly for the Mixed and Seniors will be in our usual hospitality suite (Room 2321). They will provide grab and go breakfast and lunch each day'

**Breakfast:** From 8-10 am. There will be individually packaged cereal, fruit, hard boiled eggs, bagels, and surprise treats. Also individual butter, jam, peanut butter, and cream cheese, as well as condiment packages. They will be making coffee and will have individual packages of sugar, sweetener, and dairy & non-dairy creamers. For those of you who prefer Keurig coffee, that will also be available in the hospitality suite. We are limiting access to 6 players at any one time, so we ask that you come to the suite, pick up a large to go container and put the smaller packages in that to take with you as quickly as you can, and then go someplace else to eat. **Masks that cover your nose & mouth must be worn in the Hospitality Suite at all times.** There will be a hand sanitizer station near the door and we encourage you to sanitize your hands before choosing what to take.

**Lunch:** From 2-4 pm (the first half of play each day ends at 2:35; we encourage those of you who are sitting out the 2nd quarter to go early). There will be a main dish (sandwiches, chicken, main dish salads, pizza) as well as individually packaged tuna salad, green salad, cheese, fruit, and berries. Also all the individual packages of add-ons we have for breakfast. Water and soft drinks will be available in refrigerators.

**Let us know what you want:** If there is a menu for a future day's lunch hanging on the wall outside the Hospitality Suite, please mark what you want, so we have a better idea of what to order.

### Playing Rooms & Player's Break Room

We will have bottled water in the playing rooms and if there is a refrigerator in a playing room we'll stock it with soft drinks.

We will also have bottled water in the Player's Break Room (1321), as well as soft drinks, nespresso, some packaged snacks, and some fruit.

**Masks that cover your nose & mouth must be worn in the Player's Break Room at all times, so you may not eat and drink in the room.**



Julie Arbit



Christian  
Jolly

We hope our dishes  
Keep you sated.  
Fancy food is  
Overrated!

# General Face-to-Face Tournament Information to Players

The USBF Board of Directors met earlier this week and confirmed:

1. Face-to-face play in Schaumburg will be with 2 players per room.
2. Players will not be required to get Covid tests, but will be provided with information about where they can be tested (in Woodfield Mall) if they want to be. Staff will be tested approximately once a week.
3. We will comply with the Illinois mask requirements, which currently require masks in public areas indoors. Our default will be for both players in the playing rooms to wear masks, but if the 2 players in a room agree on a different rule we will allow whatever they agree on, assuming that is in compliance with the Illinois requirements.
4. We will ask each player to sign a Covid-related waiver of liability form before they start play. Jan will be sending the text of the waiver to all of you in the next day or so, and will have printed forms in her office (room 1321) at the Hyatt for participants to sign.
5. Hospitality will be limited - "grab & go" breakfast and lunch will be distributed in our usual hospitality suite (room 2321), but everyone will have to go someplace else to eat. We will allow only 6 players in the suite at any one time. The suite will not be open for socializing at other times. We will have water, soft drinks, coffee and snacks in the Players' Break Room (1321), and there also, we will limit the number of people in the room at any one time. Eating in the Break Room is not allowed. Masks will be required in the hospitality suite and in the Players' Break Room.
6. There will be air purifiers in each playing room and in 1321 and 2321.

**Christal Henner** is an American bridge player and a World Life Master in the Open rankings of the World Bridge Federation. Henner finished second in the Rosenblum Cup World Championship in 2006 in Verona, Italy and won five North American Bridge Championships.

Christal resides in New York and is the mother of two sons both of whom play bridge themselves.

#### Wins

Jacoby Open Swiss Teams 2003

Vanderbilt 2007

Mitchell Board-a-Match Teams 2004

Roth Open Swiss Teams 2005, 2006

#### Runners-up

Rosenblum Cup 2006

North American Bridge Championships

Jacoby Open Swiss Teams 2004

Reisinger 2010



## Meet the Players

Christal is playing the Mixed Teams with Uday Ivatury as a member of the Henner team!

Within minutes, the detectives knew what the murder weapon was. It was a brief case.  
To whoever stole my copy of Microsoft Office, I will find you. You have my Word!  
My boss told me to have a good day, so I went home!  
I'm so good at sleeping I can do it with my eyes closed!



## KIBITZING ON LOVEBRIDGE

You can follow the USBC on the <https://vugraph.lovebridge.com/> website. The stream is delayed; go to the schedule below for starting times for each segment.

### Popcorn time!

Do you want to listen to commentary? Search for the TV icon! It will send you to the page where you can choose from the available live commentary. If it doesn't do anything, no one is commenting.

### Nail biting!

Do you want to be deeply involved? Choose the "Match view" at the starting page of your event. Your screen will be divided into four small screens – two of them showing the two tables of the match you choose, the other two having the scoresheet for your match and the current scores of the other matches. In the 2x2 view you can also personalize the content in all your windows. (The 2x2 view is not available on mobiles.)

### Think together!

When watching a table, click on a name and choose "Kibitz". Instead of seeing all 4 hands, you will see what the player sees, and you can decide what you would do and see whether your chosen player agrees.

### More Information:

Be well informed and tell your friends: while following the play, you can click many items. The image of the sticker with the number of the board (upper right) takes you to the results of the board, in the bottom right corner the arrow takes you the scoresheet, the DDS shows the double dummy analyses, beside that there is a button for the other table of the same match, at the top left corner you can see the bidding with alerts and the explanations (mouse over), the tricks already played, and the double dummy analysis for the available number of tricks with the par score.

### Navigation icons:

While surfing here and there in the vugraph, or amongst the archive sessions, there are icons to help you. You can always go back to the main page with the "house" or to the standings with the "scores". If you cannot see the icons, move your mouse, or touch your screen and they pop up immediately. There is also a built-in back button because the back button of your browser will always take you to the starting page. If this is not what you wanted, push next in your browser and you can continue where you were.

### Replay:

After the event you can find every board from every table easily. While replaying the hands, the only surprise can be the way "next board" button works. If you have arrived from a scoresheet, it navigates through the scoresheet. If you have arrived from a screen where the results were shown for a given board then the same buttons move you through list. Push every button and enjoy!

### KIBITZING SCHEDULE FOR THE KO (EDT)

Segment 1: 12:00 noon

Segment 2: 2:25 pm

BREAK

Segment 3: 5:45 pm

Segment 4: 8:00 pm

NEXT DAY

Segment 5: 12:00 noon

Segment 6: 2:25 pm

BREAK

Segment 7: 7:00 pm

Segment 8: 9:30 pm



*Ed. Note: See page 7 for the link to Tracey Bauer's video interview with Peter Talyigas at Love-Bridge explaining "How to Get the Most from Kibitzing on the site"*

Autocorrect can go straight to he'll.

Thanks to autocorrect, 1 in 5 children will be getting a visit from Satan this Christmas.

The guy who invented auto-correct for smart phones passed away today. Restaurant in peace.

Q: What do you call an iPhone that isn't kidding around? A: Dead Siri-ous

There's a guy in town who walks around talking to himself using only figurative language. We call him the Village Idiom.

I can give you the cause of anaphylactic shock in a nutshell.

To be or not to be a horse rider, that is equestrian.

Q: What do you call an animal you keep in your car? A: A Carpet

Q: Why did the crab never share? A: Because he's shellfish

Q. What does a dolphin say when he's confused? A. Can you please be more Pacific?

Q: What did the dolphin say after he accidentally swam into another sea creature? A: I didn't do it on porpoise



In the Daily Bulletin from the Senior Online Championships on October 3, you may have seen the **In Memoriam** for Jeff Goldsmith. Jeff lost his battle with cancer last week.

Jeff's family has designated the **USBF Junior Fund**, a 501C(3) charity, for donations in his memory. Donations may be made through the USBF website (USBF.org) and will be properly acknowledged. This was a very kind gesture by Jeff and his family who recognized how important bridge was to Jeff.

#### **ALERT!! PLAYERS WHO PLAYED IN SCHAUMBURG SO FAR...**

**Please return any styluses you may have in your possession. We need them for the Mixed and the Seniors! Thank you. No questions asked!!**

LoveBridge computes some interesting statistics on each player each day. Today you can see yesterday's statistics and tomorrow you can see the stats from today. To view, you must go to [https://stats.lovebridge.com/statistics/usbc\\_2285](https://stats.lovebridge.com/statistics/usbc_2285) and enter your username. Each player has an individual username and password. Anyone can view a complete set of stats by clicking the tournament link and selecting USBC Open All.

Your personal stats are only available when you're logged in.

Tracy Bauer put together a U-Tube video interview with Peter Talyigas at LoveBridge and if you are having trouble figuring out how to kibitz, please access the link below... it may help:

<https://www.twitch.tv/videos/1176199382>

One side note: The format is not supported on Google Chrome. It does work on Edge!!

## Mask Rules

Attendees are required to wear a mask that covers their nose and mouth in all public areas in the hotel. That means the hotel lobby, corridors, and elevators, as well as the **Hospitality Suite** and the **Office/Players' Break Room, where masks must be worn at all times. Therefore, there is no eating or drinking in those rooms.**

Our attorney has told us that the Cook County Mask Mandate forces us to require masks in the playing rooms. Therefore, we have adopted the following policy about that:

*Masks are required in playing rooms. If you are observed not wearing a mask in a playing room, there will be a 2 IMP penalty for the first offense in a segment, a 4 IMP penalty for the second offense, an 8 IMP penalty for the third offense, and a 16 IMP penalty for the fourth and subsequent offenses; however, if you and your opponent agree to something other than both wearing masks, any IMP penalties for not wearing a mask will apply to both of you equally and there will be no other penalties. You may remove your mask briefly to eat or drink. **However, if you call for a director (for any reason), and you are not wearing a mask properly when the director enters the room, the penalty will apply to your team for your **next match** in the event.** There is no eating or drinking in the playing room when the Director present.*

In addition, anyone who is penalized more than twice (over the course of the entire event) in situations where his/her opponent was wearing a mask while s/he wasn't, or where the director was called, may be subject to additional conduct penalties.

You should bring masks to the tournament with you; we will not be supplying masks.

## Covid Waiver

We are going to ask each player in these events to sign a COVID-19 Waiver of Claims. It is being sent to you by email and you may sign it electronically and return it to Jan ([marteljan@gmail.com](mailto:marteljan@gmail.com)) or you can sign a printed waiver at the site. Waivers will be available to sign in room 1321 starting Oct. 5th at 9:00 am. **Everyone is required to sign the form before the start of play!**

Each of five neighborhood dogs (Saber, Ginger, Nutmeg, Pepper, and Bear) is enjoying one of the following activities: getting its ears scratched, playing catch, taking a nap, burying a chew toy, and going for a walk.

- Pepper is either playing catch or burying a chew toy.
- Neither Ginger nor Saber nor Bear is on a walk.
- One of the dogs named after a spice is getting its ears scratched.
- A dog not named for a spice is playing catch.
- Bear is getting some exercise.
- Can you figure out what each pooch is doing?

## Logic Puzzle

Answer: Saber is taking a nap, -Ginger is getting her ears scratched, Nutmeg is -going for a walk, Pepper is burying a chew toy, and Bear is playing catch.



8  
WEST  
NONE

♠ 2  
♥ AK 7 6 5 4 3  
♦ 5 3  
♣ 7 6 4

♠ AKJ 8 4  
♥ QJ 8  
♦ A 4  
♣ AQ 5

♠ T 6 5  
♥ T 9  
♦ KT 8 7 2  
♣ J 9 2

♠ Q 9 7 3  
♥ 2  
♦ QJ 9 6  
♣ KT 8 3

Par: -420

	♣	♦	♥	♠	N
N	5	3	7	3	3
S	:	4	:	:	4
E	8	9	6	10	9
W	7	:	:	9	:

Home team		Visiting team		Room	C	By	1	=	★	P
							NS	EW	Home	Visiting
1	Rosenthal	Xu		Open	3♥	N	♦2	-1	50	8
				Closed	3N	W	♥A	=	400	
2	Moss	Kolesnik		Open						
				Closed	3N	W	♥6	=	400	
3	Rubenstein	Henner		Open	4♦	E	♥2	-2	100	11
				Closed	3N	W	♥A	+1	430	
4	Lewis	Donner		Open	4♠	W	♥A	=	420	10
				Closed	4♠	W	♥K	-1	50	

In Lewis/Donner, both East/West pairs played in 4S from West. On anything but a club lead, declarer starts out with ten tricks, but must be careful not to play too quickly.

In the Open Room where Botta was West, Smith was North, Zach Grossack was East and Kamenova was South, Smith led the HA. When that held, he continued with the HK, Kamenova pitching the C3. Smith played the C4 to the 9, T, Q. Botta cashed the SA and played the HQ. Smith followed small and Botta must pitch a club from dummy to be successful. She was up to the play. She discarded dummy's club deuce while Kamenova ruffed with the S7. Kamenova led the CK and Botta won her ace. Botta ruffed a club with the ST in dummy and played the S6, finessing against the SQ. She pulled the last spade and claimed ten tricks.

In the Closed Room where Linda Lewis was West, Grue was North, Paul Lewis was East and Tebha was South, Grue led the HK against 4S. He continued with the ace and a heart. Again, declarer must be very careful not to ruff this heart but to pitch a club in order to establish a later entry to dummy.

Unfortunately, Linda did not see this. She ruffed with dummy's ST and was overruffed by Tebha's SQ. Tebha played the S3. Lewis won the ace and played the king and jack of spades, pulling trump. She could not legitimately take ten tricks anymore. She cashed the DA; played a diamond to the king; played the CJ covered by the king and ace; cashed the CQ, and when the T did not fall, she conceded the club and went down one. 10 IMPs for Donner

At every table on this Board, West revealed a strong, balanced hand. The East players who did not search out a major suit fit were on firm ground.

There was no lead to defeat 3NT with the lack of communication between North and South.

Defending 3NT, most North players started out cashing their two high hearts and shifting to clubs... but whatever they did, even before selecting the opening lead, it was futile. If declarer wanted nine tricks, they were there for the taking.



13  
NORTH  
ALL

♠ T 9 5  
♥ J T 8 4  
♦ 6 5  
♣ A J T 6

♠ A K Q J  
♥ Q 2  
♦ J 9 8  
♣ Q 8 3 2

♠ 8 4 3  
♥ A K 7 6 3  
♦ K Q 7 4 3  
♣

♠ 7 6 2  
♥ 9 5  
♦ A T 2  
♣ K 9 7 5 4

Par: -1370

	♣	♦	♥	♠	N
NS	6	1	2	2	6
EW	7	12	10	11	7

	Home team	Visiting team		Room	C	By	1	=	*	P		
									NS	EW	Home	Visiting
1	Rosenthal	Xu		Open	3N	W	♥4	=		600		
				Closed	3N	W	♠T	=		600		
2	Moss	Kolesnik		Open	3N	W	♣J	-1	100			
				Closed	3N	W	♣T	-1	100			
3	Rubenstein	Henner		Open	3N	W	♣T	-2	200			
				Closed	4♥	E	♥5	+1	650		13	
4	Lewis	Donner		Open	3N	W	♦6	-1	100			13
				Closed	3N	W	♠9	+2	660			

In contrast to Board 8 where 3NT was better than the major suit game, on Board 13, 3NT is inferior and doomed while 4H is always cold. Only Wooldridge/Molson found the cold 4H game. Molson opened the East hand 1H in second seat. Wooldridge responded 2C showing 2+ clubs with game forcing values. Molson bid 3D. Wooldridge showed a flat hand. Molson rebid her diamonds and Wooldridge showed a doubleton heart. Molson chose well to play in 4H.

Henner led the H5; Molson won dummy's queen. She pulled two more rounds of trump and played a diamond toward the jack. Cristal ducked. Molson continued with the D9 to the queen and ace. Henner played a low club and declarer claimed 11 tricks.

At the other table in this match, Starr/Doub played 3NT:

W	N	E	S
	PASS	1♥	PASS
1♠	PASS	2♠	PASS
3NT	PASS	PASS	PASS

Adam G led the CT. Parker won her king and returned the C4 to Adam's jack. Adam exited with a spade. Declarer cashed his major suit winners and played a diamond. The defense took the last four tricks. Contract down two. 13 IMPs to Rubenstein

It is interesting that not one East/West pair chose to play in diamonds where they can take 12 tricks! Too early to start swinging??

<https://vugraph.lovebridge.com/screen/usbc/2291?screen=frequency&board=13&round=5>

Double game swings occur with some frequency. Board 2 in the 5<sup>th</sup> segment of the Kolesnik/Moss match produced a “double-double” game swing.

Jenny Wolpert opened 1H and Alex Kolesnik bid 2H (Michaels). Dwyer passed and Lynne Feldman’s 2NT bid asked for Kolesnik’s minor. Wolpert bid 3H, and with 6-5 distribution, Kolesnik freely bid 4C. Dwyer competed to 4H and Feldman bid 4S, doubled by Wolpert. Wolpert led the SA and switched to HA! This gave Feldman the HK for her tenth trick. +590.

Dwyer bid 4H, but he might have considered 4D along the way. If the opponents had bid 4S, his partner would know where his

“stuff” is and she can make the decision whether to bid on or not. And if not, from his perspective, she could better evaluate what best to lead.

At the other Yul Inn bid 4H over Lee’s jump to 3S and Cheryl Mandala took the push to 5H. Lee doubled and Moss led the CK. Lee overtook but failed to find the killing diamond shift. Instead, he shifted to a spade! If Moss wanted a diamond ruff, she probably should have led a small club or to be sure not to blow a club trick, perhaps the CJ.

Inn won the SA, cashed the SK and trumped a spade in dummy. He led dummy’s HJ, which held the trick. Inn trumped a club and led a diamond toward dummy.

Moss decided to trump the diamond, but it didn’t matter since she was trumping a loser and she had no useful discards. Moss returned a high club. Lee discarded a diamond and Inn trumped in his hand, producing this five card end position:

From this point, it was easy. Inn led a diamond to dummy and trumped a club while Lee discarded a diamond. Inn led a second diamond to dummy, and Less was couped!! Inn’s last two cards were ace and queen of hearts sitting over Lee’s heart king/5.

Inn took eleven tricks for +850. 16 IMPs to Kolesnik

<https://vugraph.lovebridge.com/screen/usbc/2291?screen=frequency&board=2&round=5>

		16		WEST		E-W		♠ JT 6 5		♥ T 8 4		♦ AT 9		♣ AK 2			
		♠ KQ 4 3 2		♥ K 5		♦ 8 6 3		♣ T 8 7		♠		♥ J 6 3		♦ KQJ 7 5		♣ QJ 9 6 4	
		♠ A 9 8 7		♥ AQ 9 7 2		♦ 4 2		♣ 5 3									
		Par: 140															
NS	5	5	9	8	8												
EW	8	8	4	5	5												

		Home team	Visiting team	Room	C	By	1	=	★	P
		NS	EW	Home	Visiting					
1	Rosenthal	Xu	Open	3N	N	♦Q	-2	100		
			Closed	3♦	E	♣5	-1	100	5	
2	Moss	Kolesnik	Open	3♦	E	♣5	=	110		
			Closed	2♠	W	♣K	-4	400	11	
3	Rubenstein	Henner	Open	3♠	N	♦Q	-1	50		
			Closed	4♠	N	♦K	-2	100	2	
4	Lewis	Donner	Open	3♥	N	♦Q	=	140		
			Closed	3♣	E	♦4	-1	100	1	

Board 16 was brutal for the Moss team. In the Open room, Feldman, East, and Alex Kolesnik, West, bid to 3D in a competitive auction where Dwyer, North, opened 1C; Feldman overcalled 1D; Wolpert, South, bid 1S, and Dwyer made a support double. East bid 2D; South bid 2H; West bid 3D and E/W played it there.

Wolpert led her C5. Dwyer cleverly won his ACE!! in order to mislead declarer. The ace should deny the king. Dwyer continued with the C2 to the 6, 3, T. The operation was a success but the patient died!! Feldman knocked out the DA. Kevin cashed his CK... but he could no longer give Wolpert her ruff to defeat the hand. The defense collected four aces and the CK. Contract making +110.

Meanwhile... at the other table, things were more exciting. Kit Woolsey opened a 10-12 NT. Lee passed; Sally bid 2H to play and Sylvia Moss stepped in at unfavorable to bid 2S on her eight count and five card suit. Everyone passed.

Kit cashed two high clubs and gave Sally a ruff. Sally exited with the D4 to Kit's ace and Kit continued with the DT. Moss won in dummy and played a low heart. Sally played the queen. Moss covered with the king which held. Moss was helplessly locked in her hand. She played the S2 which lost to the eight.

Sally cashed the HA and played the H7. Moss ruffed in hand and played the SK. Sally won the ace and played another heart. Moss ruffed with the queen and Kit collected the last two tricks with his high trump! Contract down FOUR! -400

11 IMPs to Kolesnik

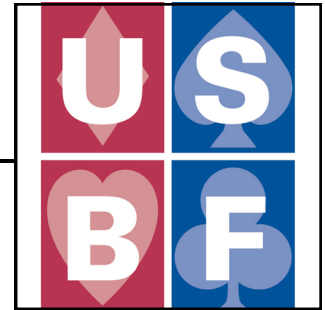
<https://vugraph.lovebridge.com/screen/usbc/2291?screen=replay&ns=26051&board=16&round=6>

7	8	5	4	1	6	9	3	2
6	4	9	5	2	3	7	1	8
1	3	2	9	8	7	5	4	6
9	1	4	6	3	5	2	8	7
5	7	8	2	9	4	3	6	1
3	2	6	1	7	8	4	5	9
4	5	7	8	6	9	1	2	3
2	6	3	7	4	1	8	9	5
8	9	1	3	5	2	6	7	4

4	7	6	5	3	2	1	9	8
2	8	3	9	1	7	5	4	6
1	9	5	8	6	4	3	2	7
5	2	7	3	9	8	4	6	1
8	3	1	2	4	6	7	5	9
9	6	4	1	7	5	2	8	3
7	5	9	6	2	1	8	3	4
3	1	8	4	5	9	6	7	2
6	4	2	7	8	3	9	1	5

# Sudoku Answers

Answer to Sudoku 1    Answer to Sudoku 2



## USBF Supporting Membership

If you don't want to play in the USBF Championships that choose teams to represent the USA in the World Bridge Federation Championships, but do want to aid our events, a **Supporting Membership** can be the perfect way for you to be involved.

A Supporting Membership is \$25 for one year (\$75 for 3 years) and your donation will be used to cover inevitable expenses: attorney fees, accounting fees, website support services, tournament directors, insurance, WBF dues, and vugraph operators.

The USBF is an **all-volunteer** organization.

Our meetings are by conference call and at NABCS. Board members and the organization's officers are not compensated for meetings, travel, or hotel expenses.

We hope you will join us.



Count your cards  
Before you start  
So you don't have  
An extra heart!



8			3			6	7	4
2								5
	5						2	3
				7	8		5	
5		8		9				1
	1							
		2			7			
6	4	9		2		7		
	8				6		3	

# Hard Sudoku

6	4		7		3			5
	1		4					
					1	8	3	
					5		8	3
8			2		6			
5		7		9			6	
1	9						2	7
		3						
	7		5				9	

**From the Editor:**  
 Please be advised to keep this issue of the newsletter. While team lists and schedules will be reprinted in subsequent hard copy editions, other information may not.  
 Thank you!!  
 Suzi  
 If you have a great hand or bridge news or gossip you think would be of interest to our readers, you can email me at [stansubeck@prodigy.net](mailto:stansubeck@prodigy.net)



## Answer to Puzzle on Page 15

black	Dynamite	19	Tracy
white	Sunny	18	Tony
palomino	Sassy	22	Tom
pinto	Beauty	20	Linda
sorrel	Fireball	17	Cindy
Horse's	Horse's Name	Student's Age	Student's Name

## Sudoku Answers on page 13

	17	18	19	20	22	Beauty	Dynamite	Fireball	Sassy	Sunny	black	palomino	pinto	sorrel	white	
Cindy																
Linda																
Tom																
Tony																
Tracy																
black																
palomino																
pinto																
sorrel																
white																
Beauty																
Dynamite																
Fireball																
Sassy																
Sunny																

# Answer on Page 14

Student's Name	Student's Age	Horse's Name	Horse's Coloring

Cindy had horseback riding lessons twice a week and she loved them. Her riding instructor told her that she had a natural talent for riding. She'd been riding for several years now and had graduated to a smaller, more advanced class. The students in her class all had their own horses and by some strange coincidence, all of the horses had different coloring. Determine the first name and age of each student in Cindy's class (the students were between 17 and 22 years old), and the name and coloring of each student's horse.

1. Cindy didn't ride a white horse but she was 17 years old. Tracy didn't ride Fireball.
2. Tony was older than the student riding Fireball but he was also two years younger than the student riding the pinto.
3. Sunny was a white horse but he wasn't ridden by Tracy. The 19-year-old student rode Dynamite, who wasn't a palomino.
4. Linda didn't ride Sassy, whose coloring wasn't sorrel.
5. The palomino was ridden by Tom, who was two years older than the student riding Beauty.
6. The student, who wasn't Linda, riding the black horse was two years older than Fireball's rider.

# Beatles Songs 1

Find and circle all of the songs by The Beatles that are hidden in the grid.  
The remaining letters spell the name of an additional Beatles song.

W D H E Y B U L L D O G E T B A C K A  
 A R E T T E B G N I T T E G S H E P S  
 I E Y A D H T R I B B N O R E P L Y K  
 T C D A R W O P O L Y T H E N E P A M  
 S A M I O P D H A S Y N O P A G I D E  
 E E T O R N R C D R U L I S N F T H W  
 X G F I E O K U C A A N E R E I O U H  
 Y U N E R B T Y D D R P K Y G X Y R Y  
 S E H I I Y B T Y E L L B I S I B E Y  
 A T F R H A L M E E N D I E N N G P H  
 D H D I B T A E A K O C U N L G I P W  
 I H E Y L D E S V O C L E L G A R I E  
 E T R Y O Y E M G O B I E H E H R R M  
 T C B N J M M O O R L F T A T O O T L  
 A H N U E U L N E S I I W I L L N Y L  
 X A L R O L D Y I F L Y I N G E A A E  
 M I C H E L L E I P Y E N O H O E D T  
 A M W H I N Y A D R E T S E Y D L O W  
 N L R I G R E H T O N A E N I M E M I

ANOTHER GIRL  
 ASK ME WHY  
 BIRTHDAY  
 BLACKBIRD  
 CRY BABY CRY  
 DAY TRIPPER  
 DEAR PRUDENCE  
 DIG A PONY  
 ELEANOR RIGBY  
 FIXING A HOLE

FLYING  
 GET BACK  
 GETTING BETTER  
 HELLO GOODBYE  
 HEY BULLDOG  
 HEY JUDE  
 HONEY PIE  
 I ME MINE  
 I WILL  
 IF I FELL

IN MY LIFE  
 JULIA  
 LADY MADONNA  
 LOVELY RITA  
 MICHELLE  
 NO REPLY  
 OH DARLING  
 PLEASE PLEASE ME  
 POLYTHENE PAM  
 SEXY SADIE

SOMETHING  
 SUN KING  
 TAXMAN  
 TELL ME WHY  
 THE END  
 TICKET TO RIDE  
 TWO OF US  
 WAIT  
 YER BLUES  
 YESTERDAY



# bid72

Work on your Partnership  
Try the App for Free



This app will connect you to bid72. All you need to do is scan it with your phone (Special thanks to my children and grandchildren for explaining how to accomplish this...)

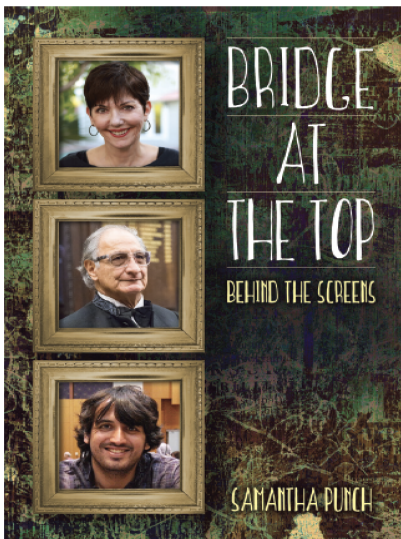
Jan VanCleaf provided this so our readers could use it to improve their bidding and better build partnerships. Bid72 allows users to participate in bidding contests, bid random boards and get a rating based on their bidding, learn about “topic board” hands dedicated to conventions and special agreements, and to create, upload and bid your own boards.

For more information, email [info@bid72.com](mailto:info@bid72.com)

In addition, Bid72 has an excellent newsletter to which you can subscribe.

Now Available

## Bridge at the Top *Behind the Screens* Samantha Punch



*The interviews make the names we see on VuGraph come to life. The tips are tricks of the trade that will be useful to players of all levels. It is a fun and informative read.*

— Jill Levin

*...intimate and revealing pictures of who these stars are, how they got to the top, and what keeps them there. The interviews are absorbing reading and the advice will help players at any level. The suggestions on partnership and mental toughness are of particular note.*

— Chip Martel

In the course of her research project, *Bridge: A MindSport for All*, sociologist Dr. Samantha Punch has been able to speak with many of the world’s top bridge personalities. The best interviews are collected in this book, and they offer fascinating insight into what it takes to be a top player, coach or even sponsor. As a bonus, each subject offers their favorite bridge tip.

US\$22.95 | GBP 17.95  
978-1-77140-064-0

Available to order today from your favourite bookstore.

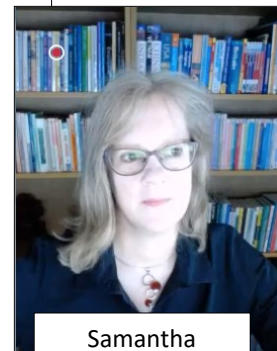
 Master Point Press

*Samantha Punch’s book is recently published and ready for your reading pleasure.*

*Sam is an amazing advocate of the game and while I have not yet read the book, based on her work with “Keep Bridge Alive” and more, I am certain you will want to have this volume in your collection!*

*Learn about the experts... how they think... what they think... and why they are so driven by a card game.*

Editor



Samantha

## Questions asked by Players in the Open and the Mixed... FAQ's from Jan Martel

### Chat

- **My physical keyboard isn't working!** Make sure to click/put focus into the chat box before attempting to type in the box. (The blinking cursor makes it seem as though focus is there, but it may not be.) This seems to only occur with an external keyboard, not the virtual keyboard.
- **What does that number on the left side mean?** You have unread chat message(s). Click on left gray arrow to open chat and right gray arrow to close the chat. (If you actually type and send a message, the chat will close automatically. Reopen with left gray arrow.)
- **Why can't I chat to my partner?** For security reasons, chat to partner is not available while cards for a new hand are on display. Since there is no "between round down time," there is no real partner chat.

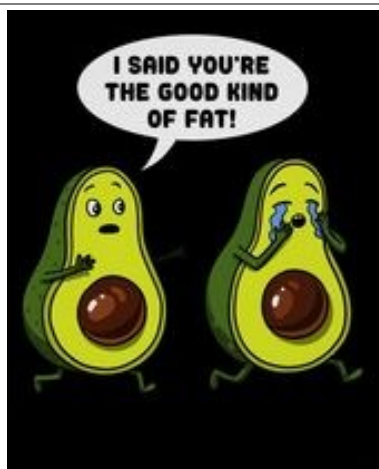
### Bidding

- **The system won't let me pass!** If you have the level (1 through 7) highlighted, you will be unable to pass/double/redouble. Click on the highlighted numeral to remove the highlight, then make the desired call.
- **My explanation keeps disappearing!** If you alert your bid as you make it but go back later to explain, there is a bug in the system where subsequent table actions will erase any text that you have typed into the explanation box. If you include your explanation with your call or when it is your turn to act, then this will not occur. (We have reported this issue to LoveBridge.)
- **Where is the undo button?** While there is no undo button, every call made is followed by a brief cancellation time period. A cancel button will appear immediately below the call selected in the top center portion of the screen. If you cancel within the time period, your bidding panel will reappear for you to select the intended call. If you do not cancel within the time period, summon a director (hit red TD whistle) to request an undo.

### Play

1. **Why can't I click on a card?** The default setting for LoveBridge is neither a tap/click nor a double tap/click. The default setting is a drag-and-drop motion where the player pulls a card to the gray box in the center of the screen and releases to play the card. If the "pulled" card is not the intended one, the player can drag it back to the hand and select another card. **We recommend this setting while players are getting accustomed to the system.** Players may change this setting to double tap/click if desired, but we strongly discourage single tap/click settings.
2. **Whose turn is it?** In the bidding or play of the hand, the player's direction letter (N S E W) will be white inside of the circle when it is the player's turn. This is a very subtle change from the normal pale blue letter.
3. **How do I claim?** During the play, you may click the larger red box below the TD whistle to claim. If the claim button is grayed out (not available), you either already contributed a card to the current trick or you are dummy.

**How do I see the bidding once play has started?** A player is not entitled to the entire auction once they have played to trick 1. If you have not yet played to trick one, the auction will be in the lower left corner. Click on it to enlarge to the center area. Click the double gray arrows in the bottom right of the center area to send it back to the corner. Similarly, this is how a player may see the cards from the previous trick (prior to playing to current trick).



What do you call  
birds that stick  
together?  
**Vel-crows.**



3 SOUTH E-W

♠ Q 9 8 3 2  
♥ Q 7 6 4  
♦ 3  
♣ K T 9

♠ 7 4  
♥ A T 8 5  
♦ 9 7 4  
♣ 8 7 5 2

♠ K  
♥ K J 2  
♦ K Q J T 6 5 2  
♣ Q J

♠ A J T 6 5  
♥ 9 3  
♦ A 8  
♣ A 6 4 3

Par: 450

	♣	♦	♥	♠	N
NS	9	4	7	11	9
EW	4	9	6	2	4

On Board 3 every South player opened 1S. Usually North jumped to game and ended the auction. Declarer has to lose two hearts and can guess the club position for an overtrick.

Six N/S pairs scored +450 while one N/S pair scored +800 and one N/S went light one for -50.

	Home team	Visiting team		Room	C	By	1	=	★	P
NS EW Home Visiting										
1	Rosenthal	Xu	Open	4♠	S	♣5	+1	450		
			Closed	4♠	S	♦4	+1	450		
2	Moss	Kolesnik	Open	4♠	S	♦4	+1	450		
			Closed	4♠	S	♠7	+1	450		
3	Rubenstein	Henner	Open	5♠	S	♦4	-1	50		11
			Closed	4♠	S	♦4	+1	450		
4	Lewis	Donner	Open	5♦x	E	♠A	-3	800		8
			Closed	4♠	S	♥A	+1	450		

Oh brother!

Hand diagram for Board 3. North (Adam Grossack): ♠ Q 9 8 3 2, ♥ Q 7 6 4, ♦ K 10 9 3, ♣ . East (Doug Doub): ♠ K, ♥ K J 2, ♦ K Q J 10 6 5 2, ♣ . South (Chris Parker): ♠ A J 10 6 5, ♥ 9 3, ♦ A 6 4 3, ♣ A 8. West (Yiji Starr): ♠ 7 4, ♥ A 10 8 5, ♦ 8 7 5 2, ♣ 9 7 4. Auction: 1♠, 3NT, 4♥, 5♦, 4NT, DBL, PASS.

In Henner/Rubenstein, Parker opened 1S and Adam Grossack, North, reached into his toy box, and pulled out 3NT showing an unspecified mini splinter. It looks more like a micro-splinter with 7 HCP, no aces and only one king. Parker bid 4C to ask shortness and Grossack responded 4H, showing diamond shortness. 4NT was keycard and 5D showed none.

Starr led the D3. Parker won the ace, trumped a diamond in dummy and led the SQ, covered by the king and won with the ace. Parker drew the last trump and led the H9 to the ten and queen, won with Doub's king. Doub returned a small heart and Starr won the eight. Starr played the HA, dropping Doub's jack and establishing dummy's seven for a useless discard. Presumably, Parker worked out that East was short in clubs. She played the CA on which Doub dropped the jack. Parker led a club to the ten losing to Doub's CQ. Down one for -50.

In the other room Henner declared 4S. She started clubs by playing the CK, taking eleven tricks to score +450.

(Continued on page 20)

(Continued from page 19)

Examining the play of the hand, Parker made a small error in her calculations. She guessed correctly that Doub was short in clubs but did not consider that Doub couldn't hold a singleton club based on the play of the other suits. Doub was known to hold a singleton spade. Unless the HJ was a bizarre psychic play, Doub held three hearts. The opening lead was the D4 (third and fifth). On the second round of spades, Doub discarded the D2. Therefore, Starr held exactly three or five diamonds. If Starr held five diamonds along with four hearts and two spades, she would have a doubleton club. The only hope was that her club doubleton was exactly QJ. Similarly, if Starr held exactly three diamonds, Doub's distribution would be 1-3-7-2 and the only hope would be to find QJ doubleton.

Perhaps Doub should have concealed the D2. This probably wouldn't hurt the defense, and it might muddy declarer's perception of the hand.

11 IMPs to Henner

The screenshot shows a bridge game interface with the following details:

- BIDDING:** West (W) passed, North (N) bid 4♠, East (E) bid 5♦, South (S) bid 1♠. A doubleton (DBL) is indicated for South.
- TRICKS:** West (W) has 3 tricks, North (N) has 9 tricks, East (E) has 8 tricks, and South (S) has 6 tricks.
- INFO:** The dealer is North.
- Hands:**
  - North (Ron Smith):** 3♦, Q♠, 9♠, 8♠, 3♠, 2♠, Q♥, 7♥, 6♥, 4♥, K♣, 10♣, 9♣.
  - West (Giorgia Botta):** 9♦, 7♦, 4♦, 7♠, 4♠, A♥, 10♥, 8♥, 5♥, 8♣, 7♣, 5♣, 2♣.
  - East (Zach Grossack):** K♦, Q♦, J♦, 10♦, 6♦, 5♦, 2♦, K♠, K♥, J♥, 2♥, Q♣, J♣.
  - South (Ljudmila Kamenova):** A♦, 8♦, A♠, J♠, 10♠, 6♠, 5♠, 9♠, 3♠, A♥, 6♥, 4♥, 3♥.
- Scores:** NS (North-South) is 101 IMPs, EW (East-West) is 188 IMPs. Other room: S 4♠ +1 450.

The other anomaly on this Board occurred in the Donner/Lewis match where it was Zach Grossack's turn to create action. Kamenova opened 1S and Smith made the normal jump to 4S. Ignoring the stoplight colors, Zach ventured 5D and, holding three aces, Kamenova had an easy double.

Kamenova led the SA and continued with the SJ. Grossack trumped the second spade and led the DK. Kamenova won the DA and played the D8. Grossack covered with the nine but decided to overtake and play hearts from his hand. He led the HJ, losing to Smith's queen. Smith returned the CT. Kamenova won the ace and continued with a club. 5D was defeated three tricks for -800.

In the other room Grue/Tebha played 4S, taking eleven tricks for +450

9 IMPs to Lewis

# Limey Jack...

Blimey Colonials, but Limey Jack needs a kip in the flat for a fortnight. Alas, work has to come to the fore lest Howie Dung somehow be thought able. Grab some quid, take a flutter, and let Limey Jack make it happen.

USA1:

Rosenthal-Donner: Donner has been the bridesmaid afore and reaches within for another slice of toast and holds on.

Moss-

Rubinstein: Howie Dung only plays favourites but that filly stumbles out of the gate and Rubenstein is declared the winner.

USA2:

Lewis-Xu: this tilt goes according to the punter's line. Lewis is just too much pony for the jockey.

Henner-kolesnik:

In the closest match, Henner is chuffed to take the measure of Kolesnik.

Limey Jack returns on the morrow.



# Howie Doing...

Only four teams  
In USA1.  
Only four days  
Till it will be done!

Rosenthal/Donner,  
How do I feel?  
Can't pick against  
The Dame Campanile!

In terms of a victor  
In Rubenstein/Moss,  
Rubenstein fails  
And suffers the loss!

Lewis v Xu  
In USA2,  
Lewis is tired  
And will not play through!

Kit's here forever,  
A month at the Hyatt?  
Play three events  
And you, too, can try it!

Kolesnik goes home.  
Henner will stay.  
They've got a Starr,  
Who really can play!

Will see you soon.  
In only two nights.  
Expect over Jack  
To have bragging rights!

Howie Doing... Grrrrrrrrrrreat!

# TRICKS AND TREATS

Thurs.-Sun., October 28-31, 2021

ACBL Tournament

Regionally Rated - All Times Eastern



## Daily Two-Session Events

Award Gold & Red Points - Must Play Both Sessions - \$30 per player



### Midday Two-Session Event Schedule

- |                                 |  |
|---------------------------------|--|
| <b>1:15 pm &amp; 4:45 pm ET</b> | <b>Golden Ghoul Gold Rush Pairs</b> (750/400/200)<br>No player may have more than 750 masterpoints |
| <b>1:15 pm &amp; 4:45 pm ET</b> | <b>Candy Corn Mid-Flight Pairs</b> (3000/1250)<br>No player may have more than 3000 masterpoints   |
| <b>1:15 pm &amp; 4:45 pm ET</b> | <b>Jack O' Lantern Top-Flight Pairs</b> (unlimited/4000)   |



## Daily Single-Session Events

Awards red points

Play in One, Two, Three or All Four Events - \$15 per player, per session

- |  |   |
|--|---|
| <b>10:15 am, 1:30 pm,<br/>5:00 pm &amp; 8:00 pm ET</b> | <b>Great Pumpkin 499er Pairs</b> (500/300/100)<br>No player may have more than 500 masterpoints |
|--|---|

## Daily Side Games

Play in two sessions of the same series for a chance to win gold!

Play in One, Two, Three or All Four Sessions - \$15 per player, per session



- |                    |   |
|--------------------|---|
| <b>10:15 am ET</b> | <b>Creaking Staircase Side Game Series</b><br>(unlimited/1500/500)      |
| <b>1:30 pm ET</b>  | <b>Rattling Chains Side Game Series</b><br>(unlimited/1500/500)         |
| <b>5:00 pm ET</b>  | <b>Flickering Lights Side Game Series</b><br>(unlimited/1500/500)       |
| <b>8:00 pm ET</b>  | <b>Howling Wind Side Game Series</b><br>(unlimited/1500/500)(No Sunday) |



Stratification for all events is by the average masterpoint holding of the pair. In any event with an upper masterpoint limit, neither player may exceed the limit for the event. Masterpoint awards for all single-session events are red points