

Volume 17, Issue 6
May 5, 2023

Results:

Open USBC USA2 - 2023											
QuarterFinal (120 boards)			Set score of form "Ax" or "Rx" indicates pending Appeal or Ruling. IMPs Total may change.								
03-May-2023			The colored score boxes indicate the team with seating rights for that segment of play.								
#	TEAM	IMPs Total	SET #1	SET #2	SET #3	SET #4	SET #5	SET #6	SET #7	SET #8	Penalty (IMPs)
1	Nickell	347	59	27	37	30	26	41	81	46	
8	Gu	135.25	7	30	18	22	19	26	4	26	-16.75
2	Lebowitz	257	17	34	28	40	33	29	37	42	-3
7	Simson	179.75	11	22	22	25	46	14	17	39	-16.25
3	Fleisher	251	46	19	28	49	41	21	15	32	
6	Levine	239.25	14	41	29	14	17	42	76	26	-19.75
4	Rosenthal	287	63	17	44	26	18	29	20	70	
5	Bramley	229.75	5	44	37	43	27	43	27	5	-1.25

USBF President
Aaron Silverstein
USBF Vice President
Lynn Baker
USBF COO & Secretary
Jan Martel
USBF CFO & Treasurer
Stan Subeck
USBF Recorder
Jack Oest
Chief Communications Officer
Suzi Subeck

Directors
McKenzie Myers, DIC
Ken Horwedel
Chris Wiegand

Tournament Organizer
Jan Martel
Software Expert
Al Hollander
VuGraph Organizers
Jan Martel
Chris Wiegand

Appeals Administrator
Suzi Subeck, Chairman

Appeals Panel:
David Berkowitz
Dana Berkowitz
Gary Cohler
Rich DeMartino
Marty Fleisher
Ron Gerard
Marty Hirschman
George Jacobs
Ralph Katz
Chip Martel
Kerri Sanborn
Danny Sprung
Stan Subeck
Adam Wildavsky

Bulletin Editor
Suzi Subeck

Hospitality
Maya Alela
Marie-France Benoit

UNITED STATES BRIDGE CHAMPIONSHIPS

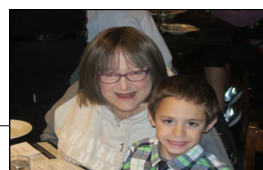
“Trials” and Tribulations



Joe Grue,
Hard at
Play

Ed. Note: With delayed broadcasting, it is especially challenging to watch every hand for write ups. If anyone has a hand of particular interest, please send me the board number & match and I will review it. Email to stansubeck@prodigy.net.

Thank you.
Suzi



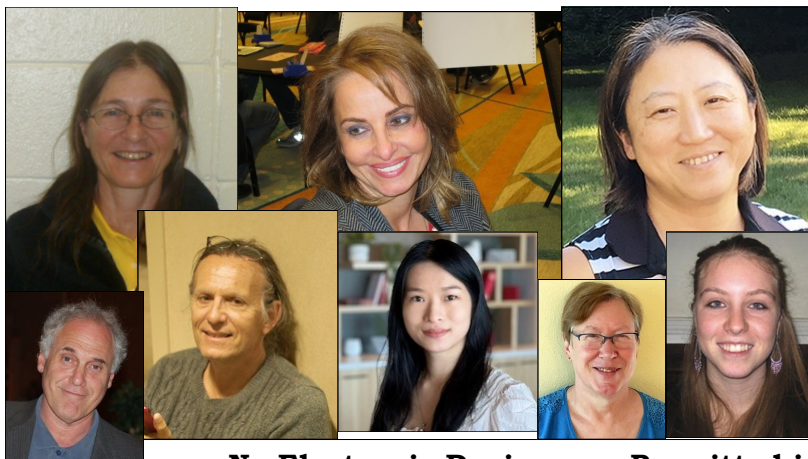
Open Teams Entered

Nickell Bye to R16	Nick Nickell Eric Greco Bobby Levin Jill Levin, NPC	Ralph Katz Geoff Hampson Steve Weinstein
Lebowitz Bye to R16	Larry Lebowitz, Capt Zach Grossack David Grainger	Adam Grossack Michael Rosenberg Joel Wooldridge
Amer	Julie Arbit, Capt Christian Jolly	Anam Tebha Owen Lien
Baseggio	Franco Baseggio, Capt Amber Lin	Jeff Ferro Drew Hoskins
Bramley	Bart Bramley, Capt Kevin Rosenberg	Kit Woolsey Brian Platnick
Dinkin	Sam Dinkin, Capt Ron Smith Tom Breur	Michael Shuster Ethan Wood
Fleisher	Marty Fleisher, Capt Joe Grue Zia Mahmood	Brad Moss Jeff Meckstroth Chip Martel
Goodman	Andy Goodman, Capt Drew Casen Venkatrao Koneru	Mike Passell Jim Krekorian Pratap Rajadhyaksha
Gu	Jiang Gu, Capt Ai-Tai Lo Chris Compton	Walter Lee Alex Kolesnik Adam Wildavsky
Juster	Jacob Morgan, Capt John Schermer Bob Hamman	Jeff Juster Neil Chambers Peter Weichsel
Levine	Mike Levine Daniel Korbel Kevin Dwyer Bob Morris, NPC	Eddie Wold Roger Lee Shan Huang
Rosenthal	Andrew Rosenthal, Capt Chris Willenken Finn Kolesnik	Aaron Silverstein Eldad Ginossar Ish DelMonte
Schireson	Max Schireson, Capt John McAllister	Debbie Rosenberg Will Watson
Simson	Doug Simson, Capt Billy Cohen	Jeff Aker Gary Cohler



Mixed Teams Entered

Cappelletti	Allison Cappelletti, Capt Joanne Weingold Raluca Dobrescu	Mike Cappelletti Gary Cohler Radu Nistor
Dinkin	Sam Dinkin, Capt Ron Smith Tracey Bauer	Olivia Schireson Yoko Sobel Billy Cohen
Henner	Christal Henner, Capt Sheila Gabay Irina Kislitsyna	Uday Ivatury Allan Graves Jeff Ferro
Kaplan	Adam Kaplan, Capt Finn Kolesnik Sheri Winestock	Dana Berkowitz Emma Kolesnik Brad Moss
Lewis	Paul Lewis, Capt Mark Itabashi Linda Lewis	Janice Molson Disa Eythorsdottir Daniel Korbel
Millens	Shan Huang, Capt Kevin Dwyer Jenny Wolpert	Joan Millens Sandra Rimstedt
Parker	Chris Parker, Capt Anam Tebha Giorgia Botta	Stewart Rubenstein Adam Grossack Zach Grossack
Pollack	Bill Pollack, Capt Cheri Bjerkan Dave Caprera	Rozanne Pollack Larry Robbins Anne Brenner
Rosenthal	Andrew Rosenthal, Capt Chris Willenken Michael Rosenberg	Migry Campanile Amber Lin Debbie Rosenberg
Wildavsky	Adam Wildavsky, Capt Yiji Brennan May Sakr	Kitty Cooper Doug Doub Jacek Pszczola



No Electronic Devices are Permitted in the Playing Area.

This applies to players AND kibitzers.

Severe penalties will be assessed for violation of this rule.

Please turn off all cell phones and check them at the door.

The USBF reserves the right to wand anyone entering the playing field.



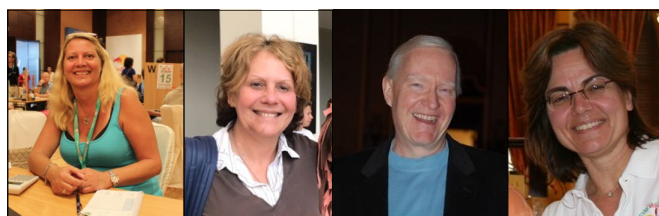
Senior Teams Entered

Beatty	Steve Beatty, Capt Jeff Aker Dennis Clerkin	Fred Stewart Doug Simson Jerry Clerkin
Cappelli	Bob Cappelli, Capt Ken Kranyak Mark Aquino	Bob Bitterman Phil Becker Jon Green
Goodman	Andy Goodman, Capt Drew Casen Venkatrao Koneru	Mike Passell Jim Krekorian Pratap Rajadhyaksha
Hamman	Bob Hamman Neil Chambers Mitch Dunitz, Capt	Peter Weichsel John Schermer Ross Grabel
Lall	Hemant Lall, Capt Bart Bramley Eddie Wold	Reese Milner Kit Woolsey Marc Jacobus
Lewis	Paul Lewis, Capt Mark Itabashi Doug Doub	Linda Lewis Neil Silverman Adam Wildavsky
Lusky	John Lusky, Capt Jim Foster Jeff Roman	Allan Falk Mark Jones Robbie Hopkins
Reynolds	Tom Reynolds, Capt Bill Hall George Jacobs	Lance Kerr Joe Viola Craig Gardner
Wolfson	Jeff Wolfson, Capt David Berkowitz Jeff Meckstroth	Steve Garner Michael Rosenberg Zia Mahmood



Women's Teams Entered

Baker	Lynn Baker, Capt Kerri Sanborn Janice Molson [alternate] Jill Meyers	Karen McCallum Sandra Rimstedt Disa Eythorsdottir
Cappelletti	Allison Cappelletti, Capt Gigi Simpson	Joanne Weingold Kristen Onsgard
Cole	Margie Cole, Capt	Giorgia Botta
Wittes	Pam Wittes, Capt Cheri Bjerkan Lisa Berkowitz	Ljudmila Kamenova Rozanne Pollack Connie Goldberg



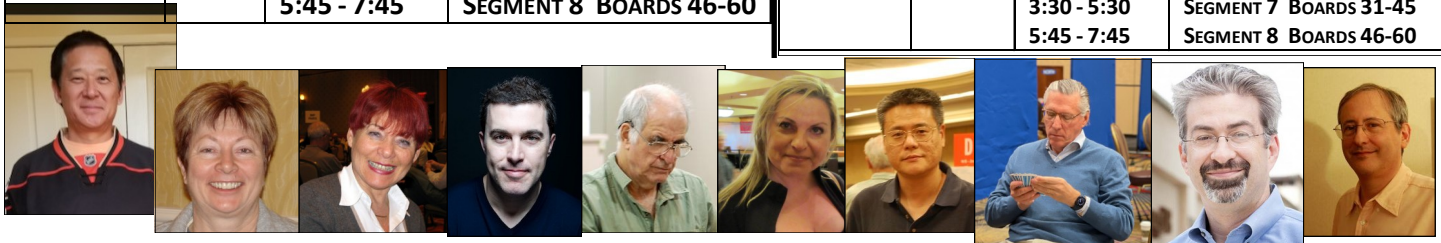
Open Team (USA2) Tournament Schedule

Please note the early starting time day one, 5/1

DAY	DATE	TIME (CDT)	BOARDS
ROUND OF 16			
MONDAY	MAY 1	11:00 - 1:15	SEGMENT 1 BOARDS 1-15
		1:30 - 3:45	SEGMENT 2 BOARDS 16-30
		75 MINUTE LUNCH BREAK	
		5:00 - 7:00	SEGMENT 3 BOARDS 31-45
		7:15 - 9:15	SEGMENT 4 BOARDS 46-60
TUESDAY	MAY 2	10:00 - 12:00	SEGMENT 5 BOARDS 1-15
		12:15 - 2:15	SEGMENT 6 BOARDS 16-30
		3:30 - 5:30	SEGMENT 7 BOARDS 31-45
		5:45 - 7:45	SEGMENT 8 BOARDS 46-60
QUARTERFINAL			
WEDNESDAY	MAY 3	10:00 - 12:00	SEGMENT 1 BOARDS 1-15
		12:15 - 2:15	SEGMENT 2 BOARDS 16-30
		3:30 - 5:30	SEGMENT 3 BOARDS 31-45
		75 MINUTE LUNCH BREAK	
		5:45 - 7:45	SEGMENT 4 BOARDS 46-60
THURSDAY	MAY 4	10:00 - 12:00	SEGMENT 5 BOARDS 1-15
		12:15 - 2:15	SEGMENT 6 BOARDS 16-30
		3:30 - 5:30	SEGMENT 7 BOARDS 31-45
		75 MINUTE LUNCH BREAK	
		5:45 - 7:45	SEGMENT 8 BOARDS 46-60
SEMIFINAL			
FRIDAY	MAY 5	10:00 - 12:00	SEGMENT 1 BOARDS 1-15
		12:15 - 2:15	SEGMENT 2 BOARDS 16-30
		3:30 - 5:30	SEGMENT 3 BOARDS 31-45
		75 MINUTE BREAK	
		5:45 - 7:45	SEGMENT 4 BOARDS 46-60
SATURDAY	MAY 6	10:00 - 12:00	SEGMENT 5 BOARDS 1-15
		12:15 - 2:15	SEGMENT 6 BOARDS 16-30
		3:30 - 5:30	SEGMENT 7 BOARDS 31-45
		75 MINUTE BREAK	
		5:45 - 7:45	SEGMENT 8 BOARDS 46-60
FINAL			
SUNDAY	MAY 7	10:00 - 12:00	SEGMENT 1 BOARDS 1-15
		12:15 - 2:15	SEGMENT 2 BOARDS 16-30
		3:30 - 5:30	SEGMENT 3 BOARDS 31-45
		75 MINUTE BREAK	
		5:45 - 7:45	SEGMENT 4 BOARDS 46-60
MONDAY	MAY 8	10:00 - 12:00	SEGMENT 5 BOARDS 1-15
		12:15 - 2:15	SEGMENT 6 BOARDS 16-30
		3:30 - 5:30	SEGMENT 7 BOARDS 31-45
		75 MINUTE BREAK	
		5:45 - 7:45	SEGMENT 8 BOARDS 46-60

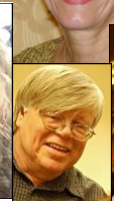
Mixed Team Tournament Schedule

ROUND ROBIN			
DAY	DATE	TIME	BOARDS
WEDNESDAY	MAY 10	10:00 - 11:30	MATCH 1 - BOARDS 1-10
		11:45 - 1:15	MATCH 2 - BOARDS 11-20
		2:30 - 3:45	75 MINUTE LUNCH BREAK
		4:00 - 5:15	MATCH 3 - BOARDS 21-30
			MATCH 4 - BOARDS 31-40
THURSDAY	MAY 11	10:00 - 11:15	MATCH 5 - BOARDS 41-50
		11:30 - 12:45	MATCH 6 - BOARDS 51-60
		2:00 - 3:15	75 MINUTE LUNCH BREAK
		3:30 - 4:45	MATCH 7 - BOARDS 61-70
		5:00 - 6:15	MATCH 8 - BOARDS 71-80
			MATCH 9 - BOARDS 81-90
USA1 SEMIFINAL & USA2 STAGE 1			
FRIDAY	MAY 12	10:00 - 12:00	SEGMENT 1 BOARDS 1-15
		12:15 - 2:15	SEGMENT 2 BOARDS 16-30
		3:30 - 5:30	75 MINUTE BREAK
		5:45 - 7:45	SEGMENT 3 BOARDS 31-45
			SEGMENT 4 BOARDS 46-60
SATURDAY	MAY 13	10:00 - 12:00	SEGMENT 5 BOARDS 1-15
		12:15 - 2:15	SEGMENT 6 BOARDS 16-30
		3:30 - 5:30	75 MINUTE BREAK
		5:45 - 7:45	SEGMENT 7 BOARDS 31-45
			SEGMENT 8 BOARDS 46-60
USA1 FINAL & USA2 QUARTERFINAL			
SUNDAY	MAY 14	10:00 - 12:00	SEGMENT 1 BOARDS 1-15
		12:15 - 2:15	SEGMENT 2 BOARDS 16-30
		3:30 - 5:30	75 MINUTE BREAK
		5:45 - 7:45	SEGMENT 3 BOARDS 31-45
			SEGMENT 4 BOARDS 46-60
MONDAY	MAY 15	10:00 - 12:00	SEGMENT 5 BOARDS 1-15
		12:15 - 2:15	SEGMENT 6 BOARDS 16-30
			75 MINUTE BREAK
USA1 FINAL & USA2 SEMIFINAL			
MONDAY	MAY 15	3:30 - 5:30	USA1 SEGMENT 7 BOARDS 31-45
		5:45 - 7:45	USA2 SEGMENT 1 BOARDS 1-15
			USA1 SEGMENT 8 BOARDS 46-60
			USA2 SEGMENT 2 BOARDS 16-30
USA2 SEMI FINAL			
TUESDAY	MAY 16	10:00 - 12:00	SEGMENT 3 BOARDS 31-45
		12:15 - 2:15	SEGMENT 4 BOARDS 46-60
		3:30 - 5:30	75 MINUTE BREAK
		5:45 - 7:45	SEGMENT 5 BOARDS 61-75
			SEGMENT 6 BOARDS 76-90
USA2 FINAL			
WEDNESDAY	MAY 17	10:00 - 12:00	SEGMENT 1 BOARDS 1-15
		12:15 - 2:15	SEGMENT 2 BOARDS 16-30
		3:30 - 5:30	75 MINUTE BREAK
		5:45 - 7:45	SEGMENT 3 BOARDS 31-45
			SEGMENT 4 BOARDS 46-60
THURSDAY	MAY 18	10:00 - 12:00	SEGMENT 5 BOARDS 1-15
		12:15 - 2:15	SEGMENT 6 BOARDS 16-30
		3:30 - 5:30	75 MINUTE BREAK
		5:45 - 7:45	SEGMENT 7 BOARDS 31-45
			SEGMENT 8 BOARDS 46-60



Senior Team Tournament Schedule

ROUND ROBIN (EACH TEAM SITS OUT ONE MATCH)			
DAY	DATE	TIME	BOARDS
FRIDAY	MAY 19	10:00 - 11:30	MATCH 1 - BOARDS 1-10
		11:45 - 1:15	MATCH 2 - BOARDS 11-20 75 MINUTE LUNCH BREAK
		2:30 - 3:45	MATCH 3 - BOARDS 21-30
		4:00 - 5:15	MATCH 4 - BOARDS 31-40
SATURDAY	MAY 20	10:00 - 11:15	MATCH 5 - BOARDS 41-50
		11:30 - 12:45	MATCH 6 - BOARDS 51-60 75 MINUTE LUNCH BREAK
		2:00 - 3:15	MATCH 7 - BOARDS 61-70
		3:30 - 4:45	MATCH 8 - BOARDS 71-80
		5:00 - 6:15	MATCH 9 - BOARDS 81-90
USA1 SEMIFINAL & USA2 STAGE 1			
SUNDAY	MAY 21	10:00 - 12:00	SEGMENT 1 BOARDS 1-15
		12:15 - 2:15	SEGMENT 2 BOARDS 16-30 75 MINUTE BREAK
		3:30 - 5:30	SEGMENT 3 BOARDS 31-45
		5:45 - 7:45	SEGMENT 4 BOARDS 46-60
MONDAY	MAY 22	10:00 - 12:00	SEGMENT 5 BOARDS 1-15
		12:15 - 2:15	SEGMENT 6 BOARDS 16-30 75 MINUTE BREAK
		3:30 - 5:30	SEGMENT 7 BOARDS 31-45
		5:45 - 7:45	SEGMENT 8 BOARDS 46-60
USA1 FINAL & USA2 QUARTERFINAL			
TUESDAY	MAY 23	10:00 - 12:00	SEGMENT 1 BOARDS 1-15
		12:15 - 2:15	SEGMENT 2 BOARDS 16-30 75 MINUTE BREAK
		3:30 - 5:30	SEGMENT 3 BOARDS 31-45
		5:45 - 7:45	SEGMENT 4 BOARDS 46-60
WEDNESDAY	MAY 24	10:00 - 12:00	SEGMENT 5 BOARDS 1-15
		12:15 - 2:15	SEGMENT 6 BOARDS 16-30 75 MINUTE BREAK
USA1 FINAL & USA2 SEMIFINAL			
WEDNESDAY	MAY 24	3:30 - 5:30	USA1 SEGMENT 7 BOARDS 31-45
		5:45 - 7:45	USA2 SEGMENT 1 BOARDS 1-15 USA1 SEGMENT 8 BOARDS 46-60 USA2 SEGMENT 2 BOARDS 16-30
USA2 SEMI FINAL			
THURSDAY	MAY 25	10:00 - 12:00	SEGMENT 3 BOARDS 31-45
		12:15 - 2:15	SEGMENT 4 BOARDS 46-60 75 MINUTE BREAK
		3:30 - 5:30	SEGMENT 5 BOARDS 61-75
		5:45 - 7:45	SEGMENT 6 BOARDS 76-90
USA2 FINAL			
FRIDAY	MAY 26	10:00 - 12:00	SEGMENT 1 BOARDS 1-15
		12:15 - 2:15	SEGMENT 2 BOARDS 16-30 75 MINUTE BREAK
		3:30 - 5:30	SEGMENT 3 BOARDS 31-45
		5:45 - 7:45	SEGMENT 4 BOARDS 46-60
SATURDAY	MAY 27	10:00 - 12:00	SEGMENT 5 BOARDS 1-15
		12:15 - 2:15	SEGMENT 6 BOARDS 16-30 75 MINUTE BREAK
		3:30 - 5:30	SEGMENT 7 BOARDS 31-45
		5:45 - 7:45	SEGMENT 8 BOARDS 46-60



Beth Palmer Women's Schedule

USA1 SEMIFINAL			
SATURDAY	MAY 20	10:00 - 12:00 12:15 - 2:15	SEGMENT 1 BOARDS 1-15 SEGMENT 2 BOARDS 16-30 75 MINUTE BREAK
		3:30 - 5:30 5:45 - 7:45	SEGMENT 3 BOARDS 31-45 SEGMENT 4 BOARDS 46-60
SUNDAY	MAY 21	10:00 - 12:00 12:15 - 2:15	SEGMENT 5 BOARDS 1-15 SEGMENT 6 BOARDS 16-30 75 MINUTE BREAK
		3:30 - 5:30 5:45 - 7:45	SEGMENT 7 BOARDS 31-45 SEGMENT 8 BOARDS 46-60
USA1 FINAL & USA2 SEMIFINAL			
MONDAY	MAY 22	10:00 - 12:00	SEGMENT 1 BOARDS 1-15
		12:15 - 2:15	SEGMENT 2 BOARDS 16-30 75 MINUTE BREAK
		3:30 - 5:30	SEGMENT 3 BOARDS 31-45
		5:45 - 7:45	SEGMENT 4 BOARDS 46-60
TUESDAY	MAY 23	10:00 - 12:00	SEGMENT 5 BOARDS 1-15
		12:15 - 2:15	SEGMENT 6 BOARDS 16-30 75 MINUTE BREAK
		3:30 - 5:30	SEGMENT 7 BOARDS 31-45
		5:45 - 7:45	SEGMENT 8 BOARDS 46-60
USA2 FINAL			
WEDNESDAY	MAY 24	10:00 - 12:00	SEGMENT 1 BOARDS 1-15
		12:15 - 2:15	SEGMENT 2 BOARDS 16-30 75 MINUTE BREAK
		3:30 - 5:30	SEGMENT 3 BOARDS 31-45
		5:45 - 7:45	SEGMENT 4 BOARDS 46-60
THURSDAY	MAY 25	10:00 - 12:00	SEGMENT 5 BOARDS 1-15
		12:15 - 2:15	SEGMENT 6 BOARDS 16-30 75 MINUTE BREAK
		3:30 - 5:30	SEGMENT 7 BOARDS 31-45
		5:45 - 7:45	SEGMENT 8 BOARDS 46-60



Kibitzing: THERE WILL BE DEFERRED KIBITZING FOR ALL OF THE 2023 USBCs ON LOVEBRIDGE

You can follow the USBC on the <https://vugraph.lovebridge.com/> website. When available, voice commentary may be accessed by clicking on the TV screen icon. If there is no sound, you must unmute.

KIBITZING SCHEDULE (EDT)

Day One... Note later starting time:

Segment 1: 12:30 pm

Segment 2: 3:00 pm

Segment 3: 6:30 pm

Segment 4: 8:45 pm

For all other days of the Open USBC, kibitzing times will be :

Segment 1: 11:30 am

Segment 2: 1:45 pm

BREAK

Segment 3: 5:00 pm

Segment 4: 7:15 pm

Nail biting!

Do you want to be deeply involved? Choose the “Match view” at the starting page of your event. Your screen will be divided into four small screens – two of them showing the two tables of the match you choose, the other two having the scoresheet for your match and the current scores of the other matches. In the 2x2 view you can also personalize the content in all your windows. (The 2x2 view is not available on mobiles.)

Think together!

When watching a table, click on a name and choose “Kibitz”. Instead of seeing all 4 hands, you will see what the player sees, and you can decide what you would do and see whether your chosen player agrees.

More Information:

Be well informed and tell your friends: while following the play, you can click many items. The image of the sticker with the number of the board (upper right) takes you to the results of the board, in the bottom right corner the arrow takes you to the scoresheet, DDS shows the double dummy analyses, beside that there is a button for the other table of the same match, at the top left corner you can see the bidding with alerts and the explanations (mouse over), the tricks already played, and the double dummy analysis for the available number of tricks with the par score.

Navigation icons:

While surfing here and there in the vugraph, or amongst the archive sessions, there are icons to help you. You can go back to the main page with the “house” or to the standings with the “scores”. If you cannot see the icons, move your mouse, or touch your screen and they pop up immediately. There is also a built-in back button because the back button of your browser will always take you to the starting page. If this is not what you wanted, push next in your browser and you can continue where you were.

Replay:

After the event you can find every board from every table easily. While replaying the hands, the only surprise can be the way “next board” button works. If you have arrived from a scoresheet, it navigates through the scoresheet. If you have arrived from a screen where the results were shown for a given board, the same buttons move you through the list. Push every button and enjoy!



I kibitz day.
I kibitz night.
I try to get
The bidding right.

I watch the experts
Till they're through.
I try to guess
What they will do!



Kibitzing...

VACCINATION REQUIRED:
All players in the 2023 USBC's MUST be vaccinated against CoVid19.
Players must submit proof of vaccination to the USBF Secretary (Jan Martel) before play commences in the event.

2023 USBCs Hospitality

Although the Covid situation has improved, it is still out there. To keep our players and staff safe, we want to keep the number of people in the suite to a minimum at any one time. Our wonderful hostesses, Maya Alela and Marie-France Benoit will host you in our usual suite (Room 2321). Grab and go breakfast and lunch each day, except that on the first Monday and Tuesday, when lunch will be available in the Copper, Sage, and Maize meeting rooms off the corridor running from the hotel's front door to the back door.

Breakfast: From 8-10 am. There will be individually packaged cereal, fruit, hard boiled eggs, bagels, with some hot options. There will be individual butter, jam, peanut butter, and cream cheese, as well as condiment packages. Maya & Marie-France will be making coffee and will have individual packages of sugar, sweetener, and dairy & non-dairy creamers. For those of you who prefer Keurig coffee, that will also be available. We ask that you come to the suite, pick up a large to go container and put the smaller packages in that container to take with you. Then, as quickly as you can, go someplace else to eat.

Masks that cover your nose & mouth must be worn in the Hospitality Suite at all times. There will be a hand sanitizer station near the door and we encourage you to sanitize your hands before selecting your food.

Lunch: Monday, from 2:30-5:00 and Tuesday 1:30-4:00 ... Lunch in the Copper, Sage and Maize meeting rooms... salads, desserts, and main courses from local eateries.

From Wednesday on, lunch will be available in the hospitality suite from 2-4 pm (the first half of play each day ends at 2:35; we encourage those of you who are sitting out the 2nd quarter to go early). There will be a main dish (sandwiches, chicken, main dish salads, pizza) as well as tuna salad, green salad, cheese, fruit, and berries. Also all the individual packages of add-ons we have for breakfast. Water and soft drinks will be available in refrigerators.

And More on Hospitality and Regulations...

Let us know what you want: If you have specific needs or prohibitions (allergies?), please let Maya or Marie-France know and they will do their very best to provide food that meets your needs.

Playing Rooms & Player's Break Room

We will have bottled water in the playing rooms and if there is a refrigerator in a playing room we'll stock it with soft drinks.

We will also have bottled water in the Player's Break Room (1321), as well as soft drinks, Nespresso, some packaged snacks, and some fruit. We are working in that room and would appreciate it if you try to keep voices low.

Masks will be required in playing rooms only if your screenmate asks you to wear one. You do not have to put on a mask when you summon a director or ask someone to bring you coffee or water or escort you outside to smoke.



Marie-France



		4	1		6		8	5
	1		5	8				
	8			2	4			7
								9
	5			4		2	1	6
4					1			
		8		1	9		7	4
				6	2	9	5	

Sudoku 1

They say that no two people see color the exact same way, so really, color is just a pigment of your imagination.

Did you hear about the guy who pickpocketed a dwarf? How could anybody stoop so low?!

I was sitting in a coffee shop, and "Bolero" came on. Around 8 minutes later, everything started to un-Ravel.

Why don't chemists like puns? All the best ones argon.

My friend just installed ethernet in his home in Sydney. I can't wait to visit the LAN down under.

My wife and I sometimes disagree about whether to add eggs to cream. Custardy disputes are always rough.

Did you hear about the guy who jumped off a Paris bridge? He was in Seine.

My very favorite dishes are all cooked with petroleum byproducts. I guess you could say I have refined my taste.

My local Renaissance Festival is casting Knights tomorrow at 4pm. Be there or be Squire.

Why did the owner of a gentlemanly goose move to North Korea? He heard it was a great place for his propaganda.

My friend David just had his ID stolen. We just call him Dav now.



Hard Sudoku

Sudoku 2

			4					
	2	6		5	7		3	
9		5			6	7		8
				6				2
	9		3		4		7	
	8	2		7				
		7					8	
5								
8	3		5			4		

Sudoku Solutions on Page 15

Puzzle Page ...

World Currencies

Find and circle all of the world currencies that are hidden in the grid.
The remaining letters spell a secret message - a John Paul Getty quotation.

R M A R I P M E L O K I N A R U F I Y A A I
I O F I T A K A D Y O T E U C R D E H R C T
A S G B L A R U P E E O W N C E R A O A A H
L M N N U A C Z K Y T L S N C C I I T L T A
Y A O I B S Y R L I E H H W U P P A B O A B
P R D M E O O I G O I N E S U A B I K T P N
O D W N A O L G R L T N K R R O D A K U O O
U A E E N U N I L G K Y E I D E U N L W N R
N R N R U I T I V W U R L R N M L A A B E A
D I I N R O N A A I C A O A H C A W K I O N
N A L A O G F N V N A C R N E S Z K R M R A
Y Y Y U K G Z Y A O D N R A A A T Y O E D A
U R S Y H A D R D L O E O E N T E A N T A N
R Y H A T N F O O R A N D S D I U T E I L C
H A N R A A L G T A N A M R E L Q V E C A O
R I V K Y L I L A N G E N I U P I E A A S L
B E F I A V E G N E T T N I R O F U N L I O
I A A R L L N L I O U G U I Y A G O G O N N
R U B L E O D I O M U R T L U G N O R U E L
L D I N A R B A A A L A T D I R H A M R S L

AFGHANI
ARIAYRY
BAHT
BALBOA
BIRR
BOLIVAR
BOLIVIANO
COLON
DALASI
DENAR
DINAR
DIRHAM
DOLLAR
DRAM
ESCUDO

EURO
FORINT
FRANC
GOLD CORDOBA
GOURDE
GUARANI
GUILDER
HRYVNIA
KINA
KORUNA
KRONA
KRONE
KROON
KUNA
KWACHA

KWANZA
KYAT
LEMPIRA
LEONE
LILANGENI
LIRA
LITAS
LOTI
MANAT
METICAL
NAIRA
NAKFA
NEW CEDI
NEW DONG
NEW KIP

NEW SHEKEL
NGULTRUM
OUGUIYA
PATACA
PESO
POUND
PULA
QUETZAL
RAND
REAL
RIAL
RINGGIT
RIYAL
RUBLE
RUFUYAA

RUPEE
RUPIAH
SHILLING
SOM
SUCRE
SYLI
TAKA
TALA
TENGE
TOLAR
VATU
WON
YEN
YUAN RENMINBI
ZLOTY

WORLD TRANSNATIONAL OPEN SWISS AND KNOCKOUT TEAMS

August 28 – September 2

MARRAKECH GRAND PRIX TRANSNATIONAL BOARD-A-MATCH (BAM) TEAMS

August 30 – September 1



PLAY FOR WBF TITLES, MEDALS AND
MASTERPOINTS AGAINST PLAYERS
FROM ALL OVER THE WORLD

PLAY PRESTIGIOUS
CHAMPIONSHIP EVENTS AGAINST
THE WORLD'S BEST PLAYERS

ENJOY WORLD CLASS
PLAYING CONDITIONS
IN A UNIQUE LOCATION

5 OR 6 DAYS OF PLAY ACROSS BOTH
EVENTS FOR ONE ENTRY FEE

BOTH EVENTS PART OF THE
WORLD BRIDGE TOUR



**Marrakech,
Morocco**



Check details on the back →

WWW.WORLDBRIDGE.ORG

WORLD TRANSNATIONAL OPEN SWISS KO TEAMS

August 28 – September 2

- ♣ WBF titles, medals and Masterpoints
- ♣ 2 Days of Swiss Qualifying followed by 3 (4 if reaching the Final) days of KO
- ♣ A "stand-alone" championship, including non-qualifiers from the Bermuda Bowl (BB), Venice Cup (VC), D'Orsi Trophy (DOT) and Wuhan Cup (WC)
- ♣ Players eliminated on day 2 or 3 can enter the Marrakech GP Transnational BAM Teams free of charge

MARRAKECH GRAND PRIX TRANSNATIONAL BAM TEAMS

August 30 – September 1

- ♣ WBF titles, medals and Masterpoints
- ♣ 2 Days of Qualifying followed by Finals A and B (everyone plays for 3 days)
- ♣ A "stand-alone" championship, including players eliminated in the Quarterfinals of the Bermuda Bowl (BB), Venice Cup (VC), D'Orsi Trophy (DOT) and Wuhan Cup (WC)

ENTRY FEES - BOTH EVENTS TOGETHER

♣ Players from the BB, VC, DOT and WC	Free
♣ New players (per player)	350 €
♣ Moroccan BF members (per player)	250 €
♣ Youth players - U26 (per player)	175 €

ENTRY FEES - BAM ONLY

♣ Players from the BB, VC, DOT and WC	Free
♣ New players (per player)	250 €
♣ Moroccan BF members (per player)	150 €
♣ Youth players - U26 (per player)	100 €

The total Entry Fee for a Team is the sum of the 4 highest paying players, i.e. a maximum of € 1,400 respectively € 1,000.



WWW.WORLDBRIDGE.ORG

World Bridge News...

The **Bermuda Bowl**, **Venice Cup**, **d'Orsi Senior Bowl** and the **Wuhan Cup** are for national teams, respectively Open, Women, Seniors and Mixed, representing their countries, qualified from the 8 WBF Zonal Conferences.

The **World Transnational Open Teams** is open, without any qualification, to all teams, national or transnational, which want to participate, accordingly to the conditions of contest.

The **World Bridge Teams Championships**, the oldest WBF Championship, grew out of private initiatives principally by the late Norman Bach. The first world championship for the Bermuda Bowl was held in 1950, in Bermuda, 8 years before the World Bridge Federation itself was formed. After the first event of the series, the Bermuda Bowl developed into a regular challenge match between the USA and the winners of the European Championship, but in 1957 the contest widened to included teams representing other zones of the WBF.

In 1974, in Venice, Italy, a new event was launched, the Venice Cup. It started as a challenge match between women's teams from the USA and Italy (Europe 's representative) and today it is the equivalent of Bermuda Bowl for women, organized under the same laws and format.

A third series, the Senior Bowl, for senior players was added in 2001. Ernesto d'Orsi, Past President of the WBF and a member of the WBF Committee of Honor and the WBF Executive Council, presented the d'Orsi Seniors Trophy for the winners of this Championship at the World Teams Championships held in Brazil in 2009.

In March 2018 in Philadelphia the Executive Council added a fourth series for Mixed Teams starting from 2019 in Wuhan, China. This new event was named after the City of Wuhan which presented the prestigious trophy and provided, and will provide for the future editions, replicas for the winners.

Pun-ishment!

What do you call it when a cat wins first place at a dog show? A cat-has-trophy!

Did you hear about the man who left his fortune to the San Andreas nature preserve? He was generous to a fault.

I need to stop hanging around with pessimistic horses. Neigh-sayers never add anything to the conversation.

Did you hear about the oil spill relief workers who cleaned 15 dolphins with a single box of borax? Turns out that, just like it says on the box, it's a great multi-porpoise cleanser.

Two amphibians were croaking at each other outside my window. It was Toadally ribbeting!

"Doctor, help! I'm shrinking!" "Take this and you'll be back to normal in a few weeks.

Until then, you'll just have to be a little patient."

Did you hear about the casino restaurant that feeds its cows cannabis? Yeah, some gamblers prefer high steaks.

What'd the conductor say when she found her missing music? SCORE!

Did you hear that Apple is removing low quality programs from the iTunes Store, and writing down the developer IDs so they can't submit more later? It's about time they started kicking apps and taking names.

So the University of Illinois at Urbana Med School has created a new program to help doctors deal with patients who fake injuries to get drugs. Turns out that doctors from Urbana are really familiar with Sham Pain.

Did you hear about the camouflage store that doesn't accept credit cards? Their patterns are in-visa-ble!

Did you hear about the middle school that voted to change their mascot? It was an agricultural area, but they wanted to be progressive and offer a female mascot. So, they had three choices, a female sheep, a female goat, and a female deer. After a long campaign, a series of debates, and a day of students voting yes or no on each, the principal stood before his students and announced that, in a unanimous vote, the new school mascot would be a female sheep. It seems that even after all the campaigning, debate, and division, the student body only had Ayes for Ewe.

How does Satan like his pasta? Al Dante.

Did you know that dropping an ant into a glass of water will tell you its gender? If it sinks, girl ant. If it floats, boy ant.

Why don't mathematicians use knives to eat prime rib? They know it can't be divided!

Why do bulls make terrible salesmen? They charge too much.

Do the Dukes of Hazzard ever stop for the police? Not General Lee.

I was running a study the other day where I dressed some people up as Koalas to see if it made them sound more Australian. It mostly went well, but some people needed to be shifted into the no-costume control group because they didn't like the fake fur. I hate diskoalafying participants.



Logic Puzzle...

	Manning	Park	Pennant	Stewart	Sullivan	bicycle	bus	car	subway	walking	20 min	25 min	30 min	35 min	40 min	
Chris																
Clyde																
David																
Earl																
Ed																
20 min																
25 min																
30 min																
35 min																
40 min																
bicycle																
bus																
car																
subway																
walking																

**Answer on Page 15
Bottom of Page**

First Name	Last Name	Mode of Transportation	Time to Arrive

Five roommates met last Wednesday to celebrate Louis' birthday, another mutual friend. During the birthday festivities, the roommates ended up in a cheerful debate about how best to travel in the traffic-clogged city. While many creative suggestions were offered by other birthday guests, the roommates decided to try a little test on their way home that evening. Each would use a different mode of transportation to get back home. Since their departure and arrival destinations were the same, it would be a good test of actual transportation times. Determine the full name of each roommate, the mode of transportation each chose for the return trip home, and how long it took each of them to arrive (20 to 40 minutes).

1. Ed didn't use the bus. Mr. Sullivan's first name was Chris.
2. Mr. Manning spent ten minutes longer to arrive home than it took Clyde but he was back five minutes faster than the roommate who took the bus.
3. The roommate who walked spent 20 minutes getting home. Earl came home in a car.
4. David didn't use the subway to get home but he arrived five minutes before Mr. Park, whose first name wasn't Ed.
5. Mr. Stewart arrived home in 30 minutes.
6. The roommate who used a bicycle returned ten minutes earlier than Earl but his last name wasn't Pennant

Meet the Players

Charles U. "Chip" Martel (born 1953) is an American computer scientist and bridge player. Martel was Inducted into the ACBL Hall of Fame in 2014. He is married to Jan Martel, also in the ACBL Hall of Fame.

ACADEMIC LIFE

Martel received a B.S. degree from Massachusetts Institute of Technology in 1975, and a Ph.D. from UC Berkeley in 1980. He helped establish the computer science department at UC Davis, received tenure there in 1985–86, and retired in 2013. At UCD he is Charles U. Martel, Professor Emeritus. His academic interests involved designing and analyzing algorithms.

BRIDGE ACCOMPLISHMENTS

Awards and Honors

- Herman Trophy (1) 1981
- Mott-Smith Trophy (1) 1994
- Fishbein Trophy (1) 2000
- ACBL Hall of Fame, 2014

Wins

- Bermuda Bowl (4) 1985, 1987, 2001, 2017
- World Open Pairs Championship (1) 1982
- Rosenblum Cup (1) 1994
- World Senior Teams (1) 2016
- North American Bridge Championships (34)
 - von Zedtwitz Life Master Pairs (1) 2007
 - Nail Life Master Open Pairs (1) 2012
 - North American Pairs (1) 1988
 - Grand National Teams (9) 1982, 1983, 1985, 1987, 1993, 1996, 2003, 2009, 2017
 - Jacoby Open Swiss Teams (1) 1994
 - Roth Open Swiss Teams (1) 2010
 - Vanderbilt (7) 1984, 1987, 1994, 1996, 1998, 2011, 2018
 - Mitchell Board-a-Match Teams (5) 1995, 2001, 2005, 2007, 2018
 - Chicago Mixed Board-a-Match (1) 2001
 - Reisinger (4) 1981, 1985, 1986, 1996
 - Spingold (3) 1990, 2000, 2016

Runners-up

- Bermuda Bowl (1) 1989
- Rosenblum Cup (1) 1982
- North American Bridge Championships
 - Blue Ribbon Pairs (1) 1981
 - North American Pairs (1) 1981
 - Grand National Teams (5) 2000, 2001, 2006, 2014, 2016
 - Jacoby Open Swiss Teams (2) 2000, 2014
 - Roth Open Swiss Teams (1) 2013
 - Vanderbilt (3) 1992, 2006, 2010
 - Mitchell Board-a-Match Teams (1) 2008
 - Chicago Mixed Board-a-Match (1) 2004
 - Reisinger (3) 1983, 2006, 2007
 - Spingold (4) 1992, 1993, 1995, 2003



Martel taught and conducted research at UC Davis for more than 30 years and was named professor emeritus when he retired in 2013.

Martel's focus on design, analysis, and application of algorithms dates to a small advanced class in computer algorithms during his senior year in Course 6.

Martel notes that bridge and algorithms are both "puzzle-solving activities, where you have to find an answer based on what you know."

Chip is a brilliant bridge player and a brilliant mathematician. He has played bridge since high school in Champaign-Urbana, IL.

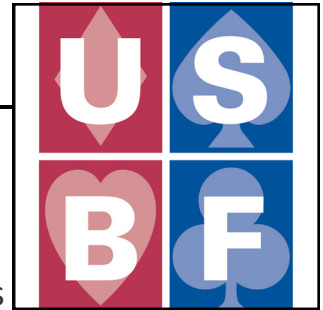
6	3	9	4	5	7	8	2	1
1	4	7	8	6	2	9	5	3
5	2	8	3	1	9	6	7	4
4	7	2	6	9	1	5	3	8
9	5	3	7	4	8	2	1	6
8	6	1	2	3	5	7	4	9
3	8	5	9	2	4	1	6	7
7	1	6	5	8	3	4	9	2
2	9	4	1	7	6	3	8	5

8	3	9	5	1	2	4	6	7
5	6	4	7	8	9	3	2	1
2	1	7	6	4	3	5	8	9
4	8	2	1	7	5	6	9	3
6	9	1	3	2	4	8	7	5
7	5	3	9	6	8	1	4	2
9	4	5	2	3	6	7	1	8
1	2	6	8	5	7	9	3	4
3	7	8	4	9	1	2	5	6

Sudoku Answers Puzzles on Page 9

Answer to Sudoku 1

Answer to Sudoku 2



USBF Supporting Membership

If you don't want to play in the USBF Championships that choose teams to represent the USA in the World Bridge Federation Championships, but do want to aid our events, a **Supporting Membership** can be the perfect way for you to be involved.

A Supporting Membership is \$25 for one year (\$75 for 3 years) and your donation will be used to cover inevitable expenses: attorney fees, accounting fees, website support services, tournament directors, insurance, WBF dues, and vugraph operators.

The USBF is an **all-volunteer** organization.

Our meetings are by conference call and at NABCS. Board members and the organization's officers are not compensated for meetings, travel, or hotel expenses.

A neurologist was diagnosing a man who had lost the ability to do basic math.

"What's 9 plus 9?" "12".

"What's 8 and 8?" "10".

The doctor shook his head. "Very interesting. What about 6 times 5?"

The man thought for a second, and answered "1E".

"Aha, I've figured it out!" The doctor said. "Somebody's clearly put a hex on you."

A man walks into a bar with a slab of asphalt under his arm, and says: "A beer please, and one for the road."

30 min	subway	Stewart	Ed
35 min	car	Manning	Earl
20 min	walking	Pennant	David
25 min	bicycle	Park	Clyde
40 min	bus	Sullivan	Chris
Time to Arrive	Mode of Transportation	Last Name	First Name

**Answer
to Puzzle
on page 13**



Bridge: A MindSport For All

Connects People, Challenges Minds

Sam Punch is an amazingly hard worker and a wonderful promoter of our game! She has worked wonders in the last several years organizing and heading BAMSA. We support her wonderful work and hope you support it too!

Bridge, Youth and Schools



Who am I? My name is Samantha Punch, Professor of Sociology at the University of Stirling, UK. I lead the international work of BAMSA.

What is BAMSA? *Bridge: A MindSport for All* (BAMSA) is a research project working collaboratively with bridge organisations to increase the number of players and transform the image of the mindsport.

BAMSA believes that bridge can be promoted as a potential solution to tackle big societal issues of social isolation, loneliness, mental health problems, inclusivity and healthy ageing.

BAMSA's new study

The new project aims to develop academic evidence that demonstrates the skills and wide-ranging benefits that bridge, as a mindsport, can offer young people. The study will investigate the benefits and challenges of teaching bridge in schools. The goal is to encourage schools to take bridge as seriously as chess, and mindsport education as seriously as physical education.

How can donating help?

By donating, you enable BAMSA to conduct this work in the USA as well as Europe. The funding pays for the researchers to interview school teachers, bridge teachers, pupils and parents to explore what helps and hinders learning bridge. The funds are used to develop practical resources from the findings to enable growth of youth bridge communities in USA and Europe.

How can I donate? ***All donations will be doubled* (matched by Levine Foundation)**

Online via the University website: www.stir.ac.uk/carddonate Scroll to the bottom of the page and choose single gift, this will direct you to our donation form where you can select "Bridge Research Project" as your designated cause.

Tax efficient giving for US donors: The University of Stirling is an approved institution with British Schools & Universities Foundation. You donate through their website stating that you wish the donation to go to the University of Stirling: www.bsuf.org/donate

Via the Keep Bridge Alive Crowdfunder: <https://www.crowdfunder.co.uk/p/u5c0e5e7810869>

Thank You! Need more information?

Contact Sam with any queries – s.v.punch@stir.ac.uk

Follow BAMSA @bridgemindsport www.bridgemindsport.org



BAMSA: BRIDGE: A Mindsport for All

**Please pick up a Chicago NABC flyer before you leave Schaumburg.
We want to see you there!!
Rooms are filling.
We have engaged the Intercontinental as our overflow hotel!**

Also, grab a Chicago NABC Convention Card Sticker from the table in the Break Room where the newsletters are.

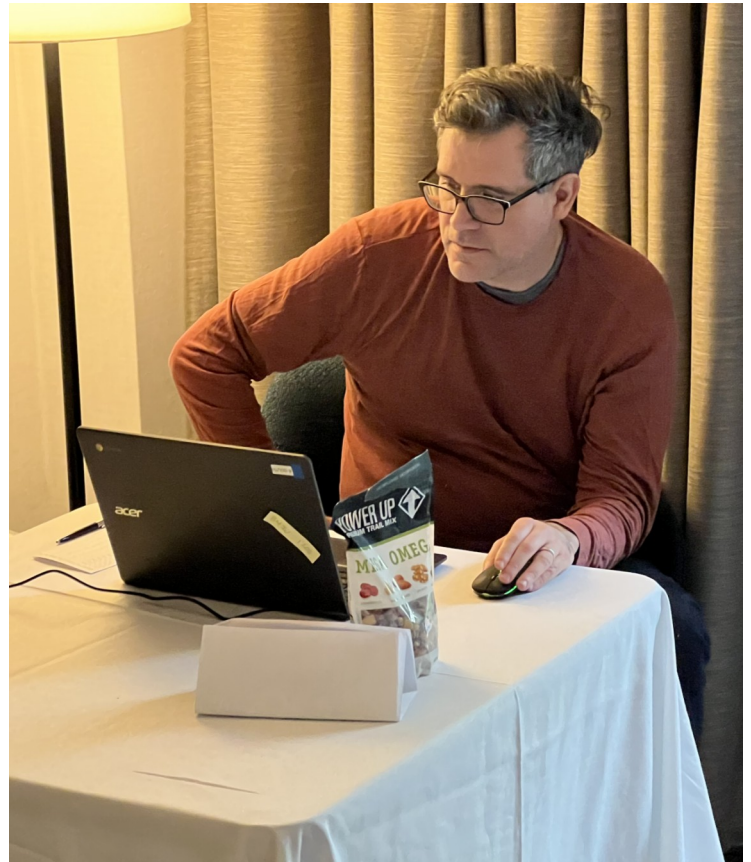
Join ABC
ACBL BIDDING CONTEST

Bid these Bidding Box hands on your phone or tablet!

ABC is a *free*, ongoing weekly bidding contest organized by the ACBL using the app **bid72**. Enter the contest with your partner and automatically receive 5 hands on your phone/tablet every week. Compare your results with hundreds of other pairs. Monthly promotion/relegation ensures an exciting challenge for everyone. Please visit www.bid72.com/abc for more details and registration.

Register here → 

Extra: Bidding Box hands will be included in ABC two weeks before the Bridge Bulletin is published.



Franco Baseggio, the brains behind EDGAR! Thank you!



Michael Shuster



Now This is the Zia We All Love...

The screenshot shows a bridge game interface with the following details:

- Navigation:** HOME, CARDS, SPLIT, and a back arrow.
- Bidding Table:**

W	N	E	S
PASS	PASS	1♣	3♦
PASS	PASS	3NT	PASS
PASS	PASS		
- Table Info:** Table: CL 3, Round: 2. N-S: Levine 30 IMP. E-W: Fleisher 51 IMP.
- Other Room:** OTHER ROOM S 3♦ = 110. Other table >
- Score Card:** NORTH DEALER 24 EAST SOUTH.
- Hand Details:**
 - North (Shan Huang):** ♠ Q5, ♥ J6532, ♦ 42, ♣ K875.
 - West (Jeff Meckstroth):** ♠ J932, ♥ K974, ♦ 753, ♣ Q2.
 - South (Kevin Dwyer):** ♠ 764, ♥ (blank), ♦ AQJ986, ♣ AT43.
 - East (Zia Mahmood):** ♠ AKT8, ♥ AQT8, ♦ KT, ♣ J96.
- Contract:** 3NT (East).
- Buttons:** DDS, EAST, 3NT.

On Board 24 of the second segment on Wednesday, Zia out Zia-ed himself. Talk about flare...

Sitting East, Zia has a 15-17 NT. OK, it has three tens and great spot cards so maybe you upgrade it to an 18-19 jump to 2NT after opening 1C...

Zia opened 1C. Dwyer overcalled 3D. When it went pass-pass back to the master, he reached in his bag of tricks (no pun intended) and bid 3NT!!

Dwyer could have led a club and Zia would still have been going down today, but Kevin didn't know to do that. He made the expert lead of the DA so as not to lose to singleton king if that was the position. Dwyer continued diamonds. Zia won the king in hand and caught the luckiest lie of the cards that anyone could imagine:

Zia cashed the SA and everyone followed.

He cashed the HA and leftie showed out. That made it easy to take four heart tricks. He played a heart to the king and called for the S9. Look at that! Qx of spades in the pocket!!

Bridge is an easy game!

11 IMPs to Fleisher when North/South at the other table played in 3D making three!

Feedback to the Editor:

Regarding the write up of Board 13 on page 22 of Wednesday's Daily Bulletin:

Ron Gerard writes:

"On Board 13, the defenders who switched to the SK instead of continuing hearts were going against the odds.

Declarer is marked with the AKQ of hearts. The CJ can't be his ninth trick, because that would give him four diamond tricks. But he can't have four fast diamond tricks without having either QJ doubleton or five diamond tricks, in which cases he would not have taken the club finesse. So West should duck the CK (only Ginossar did this, although Weinstein made it tougher for his opponent by leading low to the queen at trick two.) When he wins the next club, he knows that declarer has only eight tricks that he can see. If declarer held Qxx or Qx of diamonds, he would have tried diamonds before clubs. If he held the singleton queen of diamonds, partner would need exactly QJxx of spades for the spade shift to be right.

In short, switching to spades loses anytime declarer has jack-fourth or the queen. Continuing hearts pays off only to xxxx, AKQx, Q, J10xx or xxxx (Jxx), AKQ(x), J10, J10xx. Some people might not have opened some of those hands.

BOARD: 48
DEALER: WEST
VULNERABLE: E-W

♠ Q8764
 ♥ QJT6
 ♦ K874
 ♣

♠ AKT9
 ♥ 3
 ♦ A6
 ♣ KQJ932

♠ J
 ♥ AK7
 ♦ J9532
 ♣ T865

Par: -1100

	♣	♦	♥	♠	N
NS	1	4	7	5	3
EW	12	9	6	7	10

♠ 532
 ♥ 98542
 ♦ QT
 ♣ A74

Home team		Visiting team		Room	By	=	★ IMP		
							NS	EW	
1	Nickell	Gu		Open	5♣	W ♥Q	+1	620	13
				Closed	6♣	W ♥Q	=	1370	
2	Lebowitz	Simson		Open	6♣	W ♥Q	=	1370	5
				Closed	6♣x	W ♥Q	=	1540	
3	Fleisher	Levine		Open	6♣	W ♥J	=	1370	13
				Closed	5♣	W ♥Q	+1	620	
4	Rosenthal	Bramley		Open	5♣	W ♥Q	+1	620	13
				Closed	6♣	W ♥Q	=	1370	

Board 48 of the final segment is amusing.

Looking at the traveler reveals that there were NO push matches!!

The closest swing was 5 IMPs when one table was doubled in 6C and one was not.

In each of the other 3 matches, one team bid game while the other bid slam.

At least every declarer took 12 tricks!!

1	Nickell	Gu	Open	6N	W	♦T	-1	50	14
			Closed	6♣	W	♦T	=	920	
2	Lebowitz	Simson	Open	4♥	E	♦3	+1	450	10
			Closed	6♣	W	♠T	=	920	
3	Fleisher	Levine	Open	6♣	W	♠9	=	920	14
			Closed	6N	W	♦T	-2	100	
4	Rosenthal	Bramley	Open	6N	W	♦T	-1	50	2
			Closed	6♣	W	♦J	-2	100	

W	N	E	S
			PASS
1♣	PASS	1♥	PASS
3NT	PASS	4♦	PASS
4♥	PASS	4♠	PASS
5♣	PASS	6♣	PASS
PASS	PASS		

3NT=good long clubs with a singleton heart and both outside suits stopped
 4D=KC clubs
 4H=0 or 3
 4S=Q ask
 5C=no queen

NORTH		EAST	
WEST	31		
DEAF	FR		

Frequency >
 Live scores >

♠ T985 ♥ T43 ♦ JT976 ♣ 4	N Ai-Tai Lo	♠ J72 ♥ AQJ975 ♦ A52 ♣ 7
♠ AQ4 ♥ 8 ♦ KQ ♣ AKJT652	W Nick Nickell	♠ K63 ♥ K62 ♦ 843 ♣ Q983
		E Ralph Kat

Playing online with Ralph and Nick has taught me many things, not the least of which is that their partnership has really good methods to bid the best slams

The key bid in this auction was Nick's 3NT. This handy gadget makes it unnecessary to invent a reverses or jump shifts.

WE Against 6C, Lo led the 6 DT. Nick won the king. He cashed the CAK,

discarding a heart from dummy. The CJ rode to South's queen. Kolesnik returned the D4 and Nick won the queen. Nick ran his clubs from the top, led a heart to dummy's ace and cashed the DA. South was forced to stiff his SK and Nick took the last 2 tricks without a finesse.

The four card end position:

Note: When South gained the lead at trick 4 with the CQ, he could have returned a spade, putting Nick to the guess! Which finesse should Nick take? When South failed to make this play, Nickell had no guess and was happily able to operate the pop-up squeeze.

At the other table, in order to show his strong club hand, Gu opened 1C and reversed into his 2-card diamond suit, eventually settling in 6NT. The opening lead was a diamond, Gu winning the ace and squashing his own queen. He played a club to the jack. If clubs were 3-2 with the queen onside, he would have 7 clubs, 2 diamonds, 1 heart and 2 spades. When clubs failed him, he could only take 8 minor suit tricks. He played a heart to the ace and a spade off dummy to his queen. Hampson, North, held onto his T98 of spades and took the 13th trick for down one!

♠ T985 ♥ T43 ♦ JT976 ♣ 4	N Ai-Tai Lo	♠ J72 ♥ AQJ975 ♦ A52 ♣ 7
♠ AQ4 ♥ 8 ♦ KQ ♣ AKJT652	W Nick Nickell	♠ K63 ♥ K62 ♦ 843 ♣ Q983
		E Ralph Kat

				NS	EW	Home	Visiting
Nickell	Gu	Open	2♠	N	♦K +1	140	
		Closed	5♦	E	♥5 =	600	12
Lebowitz	Simson	Open	4♠	N	♦K =	420	
		Closed	5♣	W	♠A +1	620	14
Fleisher	Levine	Open	5♠x	N	♠5 -1	100	
		Closed	4♠x	N	♦K -1	100	
Rosenthal	Bramley	Open	4N	W	♥J -4	400	
		Closed	3N	W	♠6 +1	630	14

David Caprera found this hand to be worthy of note. He emailed: "All 8 tables had different auctions to different results after all starting with the same 1S opening bid. I don't think I have ever seen that."

That was odd indeed, but in looking harder at the hand, it was really pretty interesting. In Bramley/Rosenthal, in the Open Room, Woolsey declared 4NT and went light 4 tricks, while in the Closed Room, K Rosenberg played in 3NT making four.

The screenshot shows a bridge game interface. At the top, there are buttons for HOME, CARDS, and SPLIT. Below that is a bidding table:

W	N	E	S
	1♠	2♦	2♣
3NT	4♣	PASS	PASS
4NT	PASS	PASS	PASS

Below the bidding table is a table with the following information:

Table: OP 4, Round: 7			
N-S: Rosenthal			
150 IMP			
E-W: Bramley			
150 IMP			

At the bottom left, there is a section for OTHER ROOM with a button for Other table and a score card showing W 3N +1 -630. There is also a dealer indicator showing WEST 9 and EAST 10.

The main area shows the hands of the players:

- North (Andrew Rosenthal):** ♠AJ9632, ♥KJT76, ♦2, ♣7
- West (Kit Woolsey):** ♠K74, ♥A32, ♦A9, ♣AT852
- East (Bart Bramley):** ♠5, ♥94, ♦KQT853, ♣KJ63
- South (Aaron Silverstein):** ♠QT8, ♥Q85, ♦J764, ♣Q94

At the bottom right, there is a score card showing WEST 4NT, NS 0, and EW 0.

Woolsey chose to declare rather than defend. When the opponents competed to 4S, instead of doubling at unfavorable, he upped the ante to 4NT and needed to collect 10 tricks!

North led the jack of his concealed heart suit! Woolsey ducked and North continued with a heart to South's queen. Kit could not afford to duck this trick since the opponents would switch to spades.

Kit tested the diamonds and when they did not break, the best he could hope for was down one. He misguessed the club position and was set four tricks!

At the other table, North showed both of his suits and declarer, Ginossar, in 3NT had more information. The opening lead was a spade to the king. Ginossar played 3 rounds of diamonds getting the bad news. He cashed the CK and finessed South for the queen. Ten tricks were there for the taking.

14 IMPs to Rosenthal

W	N	E	S
	1♠	PASS	1NT
DBL	2♥	2♠	DBL
2NT	3♠	3NT	PASS
PASS	PASS		

Eldad Platnick Willenken Rosenberg

(Continued from page 21)

Table: OP 2, Round: 7
 N-S: Lebowitz 138 IMP
 E-W: Simson 107 IMP

OTHER ROOM
 W 5♣ +1 -620

DEALER WEST 9 EAST SOUTH

Score card > Frequency >

DDS

Hand 1 (North): ♠ AJ9632, ♥ KJT76, ♦ 2, ♣ 7
 North: David Grainger

Hand 2 (West): ♠ K74, ♥ A32, ♦ A9, ♣ AT852
 West: Billy Cohen

Hand 3 (East): ♠ 5, ♥ 94, ♦ KQT853, ♣ KJ63
 East: Gary Cohler

Hand 4 (South): ♠ QT8, ♥ Q85, ♦ J764, ♣ Q94
 South: Joel Wooldridge

Bidding: W: 1♠, N: 3♦, E: PASS, S: 3NT, 4♥, PASS, 4♣, PASS, PASS, PASS

In Simson/Lebowitz, we see a double game swing.

In the Open Room, Grainger/Wooldridge bid the spade game.

Declarer is always cold for ten tricks but it requires careful, skillful play.

Grainger was up to it.

Cohler led the DK followed by the D3. Grainger ruffed. He desperately needs to get to dummy to take the

spade finesse. If he makes the “obvious” play of the HK, West will duck, win the 2nd heart and give his partner a ruff. Declarer is virtually certain the HA is over the HQ because of the preempt. Grainger made the key play: At trick 3, he led a heart to the EIGHT!! Doing this afforded him a sure entry to dummy to pick up the spades!

In the Closed Room, it went 1S by North and Lebowitz passed (!), Simson bid a semi-forcing NT and A Grossack showed his clubs. Aker bid 2H and Lebowitz came alive with 5C, ending the auction.

Aker led a high spade and shifted to a heart to the queen and ace. Grossack cashed the SK, discarding dummy’s losing heart.

He played a club to the king and finessed against the CQ in the hand most likely to hold the club length. He took twelve tricks for +620 and 14 IMPs!

And as a bonus, trick 7 was a wish trick in diamonds!!

Table: CL 2, Round: 7
 N-S: Simson 107 IMP
 E-W: Lebowitz 138 IMP

OTHER ROOM
 N 4♠ = 420

DEALER WEST 9 EAST SOUTH

Score card > Frequency >

DDS

Hand 1 (North): ♠ AJ9632, ♥ KJT76, ♦ 2, ♣ 7
 North: Jeff Aker

Hand 2 (West): ♠ K74, ♥ A32, ♦ A9, ♣ AT852
 West: Adam Grossack

Hand 3 (East): ♠ 5, ♥ 94, ♦ KQT853, ♣ KJ63
 East: Larry Lebowitz

Hand 4 (South): ♠ QT8, ♥ Q85, ♦ J764, ♣ Q94
 South: Doug Simson

Bidding: W: 1♠, N: PASS, E: 1NT, S: 2♣, 2♥, 5♣, PASS, PASS



Limey Jack...

Cheerio Yanks:

The cream has risen with the four best squads making the Semifinals. All the favourites have prevailed.

Limey Jack continues to help you make a bob or two, while that dunderhead, Dung, wanders blindly through the desert.

Nickell-Rosenthal: Try as they might, Rosenthal cannot unseat Nickell. They just have too many kilos in the lorry.

Lebowitz-Fleisher: This will be the match to watch as it goes to the final furlong with Lebowitz final getting that elusive trip to the Final.

More in two days hence.

Ta.



Howie Doing...

We finished 16
With 14 in play.
When it was over
8 teams would stay!

We've finished the 8.
Tomorrow there's 4.
Plenty more action
As teams try to score!

Nickell v Rosenthal
Who will survive?
Rosenthal leaves
Lest Nickell should dive!

Katz is hometown...
Living nearby
Favorite Son,
That is no lie.

I hear the cheering.
You hear it too.
Locals expecting
Nickell pulls through!

Lebowitz/Fleisher,
Harder to call...
Fleisher will stay.
Lebowitz, fall!

See you in two days!
Howie Doing...

Mixed Teams Update...

The original format for the Mixed Teams prevailed in the survey and will be observed.

Thank you to those who voted so we could resolve this expediently!

The Tournament Committee

1.	Steve Weinstein - Bobby Levin	Nickell	1.25	112.86	90
2.	Daniel Korbel - Roger Lee	Levine	1.06	95.00	90
3.	Eric Greco - Geoff Hampson	Nickell	0.87	78.29	90
4.	Zia Mahmood - Jeff Meckstroth	Fleisher	0.74	66.43	90
5.	David Grainger - Joel Wooldridge	Lebowitz	0.52	46.57	90
6.	Nick Nickell - Ralph Katz	Nickell	0.50	29.71	60
7.	Chris Willenken - Eldad Ginossar	Rosenthal	0.46	41.29	90
8.	Finn Kolesnik - Ish DelMonte	Rosenthal	0.38	34.00	90
9.	Adam Grossack - Larry Lebowitz	Lebowitz	0.33	19.86	60
10.	Michael Rosenberg - Zach Grossack	Lebowitz	0.15	13.43	90
11.	Kevin Dwyer - Shan Huang	Levine	0.02	1.71	90
12.	Joe Grue - Brad Moss	Fleisher	0.02	2.14	90
13.	Bart Bramley - Kit Woolsey	Bramley	-0.04	-5.00	120
14.	Gary Cohler - Billy Cohen	Simson	-0.17	-20.57	120
15.	Andrew Rosenthal - Aaron Silverstein	Rosenthal	-0.29	-17.43	60
16.	Brian Platnick - Kevin Rosenberg	Bramley	-0.44	-52.86	120
17.	Doug Simson - Jeff Aker	Simson	-0.49	-59.29	120
18.	Alex Kolesnik - Ai-Tai Lo	Gu	-0.51	-38.43	75
19.	Chris Compton - Adam Wildavsky	Gu	-0.99	-89.43	90
20.	Jiang Gu - Walter Lee	Gu	-1.24	-93.00	75
21.	Chip Martel - Marty Fleisher	Fleisher	-1.26	-75.43	60
22.	Mike Levine - Eddie Wold	Levine	-1.50	-89.86	60

Cross IMPs...

**Two in a Room
Securest.
Healthiest.
Thank you Jan
It's Brilliant!**

