

Volume 18, Issue 1  
April 30, 2024

# “Trials” and Tribulations—Pre-Bulletin



## The Prez Says ...

Welcome to Schaumburg, Illinois, for the United States Bridge Championships. We will be selecting teams for the 2024 World Bridge Games (WBG), scheduled for October 21-November 3 in Buenos Aires. The USA is entitled to one team in each division of the WBG.

The Open commences May 1st. All play will be face-to-face. Each face-to-face stage will be two days long. Top seed, Nick Nickell has a first-round bye. Remaining teams will play head-up knockout matches.

Conditions of the Mixed, Seniors and Women’s will be determined by the number of teams in the event.

As in last year’s competition, the event will be played using LoveBridge software on ChromeBooks. *For more information, see Section XIV of the USBF General Conditions of Contest for 2024.*

**Play Requirements:** Each player must play 50% of the boards in each KO match in order to continue on the team. *See General CoC Section XII for how to count boards and potential waiver of this requirement.*

**Closed Notes:** Players may not consult their notes at any time during play, unless they are dummy.

**Withdrawal:** A player or team may withdraw at any time.

**Proof of Vaccination is NOT required for play. Masks are optional, however, if a masked roommate asks you to mask-up, you are required to do so. Please bring a mask to be prepared.**

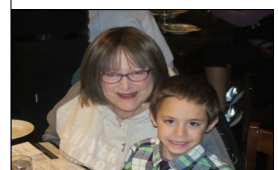
If a player tests positive for Covid-19 or has any other respiratory illness during the F2F stages of play, and wants to continue to play, the DIC may allow the player to continue to compete in a separate hotel room. In that situation, both the ill player and their screenmate will be video recorded during play.

While the USBF Board of Directors and the tournament organizers do their best to make this event the fairest Competition year after year, only WE, the players, can uphold the high level of ethics, camaraderie and sportsmanship for which the USBF is known worldwide. Good luck! Let the games begin!

Aaron Silverstein, USBF President

Ed. Note: With delayed broadcasting, it is challenging to watch every hand for write ups. If anyone has a particularly interesting hand, please send me the board # & match # with any important details. I will do my best to review and include it. Email to [stansubeck@prodigy.net](mailto:stansubeck@prodigy.net). Thank you!

- USBF President**  
Aaron Silverstein
- USBF Vice President**  
Steve Garner
- USBF COO & Secretary**  
Jan Martel
- USBF CFO & Treasurer**  
Max Schireson
- USBF Recorder**  
Jack Oest
- Chief Communications Officer**  
Suzi Subeck
- Directors**  
McKenzie Myers, DIC  
Ken Horwedel  
Chris Wiegand
- Tournament Organizer**  
Jan Martel
- Software Expert**  
Al Hollander
- VuGraph Organizers**  
Rob Barrington
- Appeals Administrator**  
Suzi Subeck, Chairman
- Appeals Panel:**  
Wafik Abdou  
Dana Berkowitz  
Cheri Bjerkan  
Gary Cohler  
Rich DeMartino  
Ish DelMonte  
Mitch Dunitz  
Marty Fleisher  
Ron Gerard  
Marty Hirschman  
George Jacobs  
Ralph Katz  
Bobby Levin  
Chip Martel  
Eric Rodwell  
Danny Sprung  
Josh Stark  
Adam Wildavsky
- Bulletin Editor**  
Suzi Subeck
- Hospitality**  
Julie Arbit  
Marie-France Benoit



# Open Teams Entered

<b>Nickell</b>	Nick Nickell Bye to QF Bobby Levin Geoff Hampson Jill Levin, NPC	Ralph Katz Steve Weinstein Eric Greco
<b>Lebowitz</b>	Adam Grossack, Capt Zach Grossack Zia Mahmood	Larry Lebowitz Michael Rosenberg Daniel Korbel
<b>Fleisher</b>	Marty Fleisher, Capt Brad Moss Kevin Bathurst	Chip Martel Joe Grue John Hurd
<b>Bailey</b>	Bill Bailey, Capt Aaron Jones Arti Bhargava	Josh Donn Owen Lien
<b>Balleisen</b>	Aaron Balleisen, Capt Nicole Qian	Zhiyu Cheng Philip Wang
<b>Bramley</b>	Bart Bramley, Capt Brian Platnick	Kit Woolsey Kevin Rosenberg
<b>Gu</b>	Jiang Gu, Capt Ai-Tai Lo Josh Sher	Walter Lee Alex Kolesnik Ron Smith
<b>Hamman</b>	Adam Wildavsky, Capt Doug Doub John Schermer	Bob Hamman Neil Chambers Greg Hinze
<b>Han</b>	Yanong Han, Capt Qiang Zhang	Ming Sheng Brian Zhang
<b>Juster</b>	Jeff Juster, Capt Andy Goodman Shan Huang	Jacob Morgan Mike Passell Kevin Dwyer Rimstedt
<b>Petrov</b>	Dian Petrov, Capt Matthew Haag	Val Kovachev Rumen Dimitrov
<b>Robinson</b>	Eric Robinson, Capt Ish DelMonte David Berkowitz	Michael Kamil Finn Kolesnik Steve Garner
<b>Rosenthal</b>	Andrew Rosenthal, Capt Chris Willenken John Kranyak	Aaron Silverstein Gavin Wolpert Vince Demuy
<b>Schireson</b>	Max Schireson, Capt John McAllister Olivia Schireson	Debbie Rosenberg Will Watson
<b>Simson</b>	Doug Simson, Capt Eddie Wold David Grainger	Eric Rodwell Joel Wooldridge Venkatrao Koneru



# Mixed Teams Entered

Carmichael	Tom Carmichael, Capt Christian Jolly	Jenni Carmichael Julie Arbit
Derman	Ethan Derman, Capt George Klemic	Avery Silverstein Maya Jonas-Silver
Ding	Donna Compton, Capt Hong Ding	Chris Compton Adam Wildavsky
Dinkin	Sam Dinkin, Capt Harrison Luba Jeff Ferro	Yoko Sobel Cynthia Huang Jean Barry
Ivatury	Uday Ivatury, Capt Shawn Quinn Lapt Chan	Allan Graves Irina Kislitsyna Christal Henner
Lewis	Paul Lewis, Capt Mark Itabashi Cheri Bjerkan	Linda Lewis Disa Eythorsdottir Larry Robbins
Millens	Shan Huang, Capt Kevin Dwyer Sandra Rimstedt	Joan Millens Cecilia Dwyer Rimstedt
Pollack	Rozanne Pollack, Capt Dave Caprera	Bill Pollack Anne Brenner
Rosenthal	Andrew Rosenthal, Capt Chris Willenken Michael Rosenberg	Migry Campanile Jenny Wolpert Debbie Rosenberg
Rubenstein	Stewart Rubenstein, Capt Zach Grossack Adam Grossack	Anam Tebha Giorgia Botta Emma Kolesnik
Zhang	Susan Zhang, Capt Eddie Wold Janice Molson	Sylvia Shi Daniel Korbel



**No Electronic Devices are Permitted in the Playing Area.**

**This applies to players AND kibitzers.**

**Severe penalties will be assessed for violation of this rule.**

**Please turn off all cell phones and check them at the door.**

**The USBF reserves the right to wand anyone entering the playing field.**



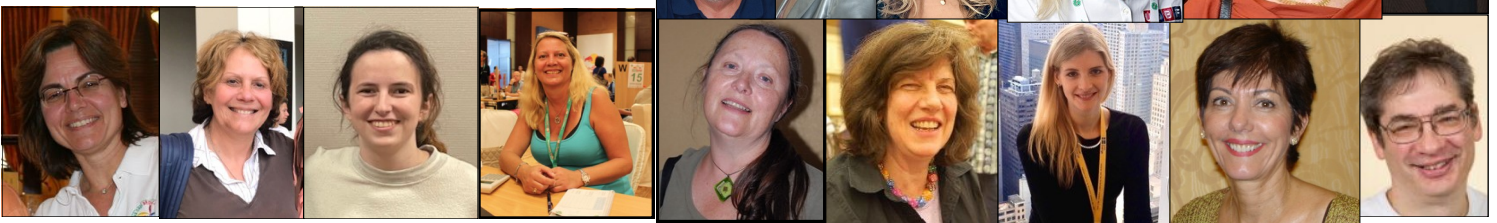
# Senior Teams Entered

Aker	Jeff Aker, Capt John Lusky Barry Rigal	Allan Falk Glenn Milgrim Ron Rubin
Cappelli	Bob Cappelli, Capt Bob Bitterman	Mark Aquino Mark Bendure
Goodman	Andy Goodman, Capt Pratap Rajadhyaksha Ron Smith	Mike Passell Venkatrao Koneru Billy Cohen
Hamman	Bob Hamman, Capt Doug Doub	Neil Chambers Adam Wildavsky
Lall	Hemant Lall, Capt Eric Rodwell Zia Mahmood	Reese Milner Eddie Wold Michael Rosenberg
Reynolds	Tom Reynolds, Capt Bernie Greenspan	Lance Kerr Fred Schenker
Simson	Doug Simson, Capt Jim Krekorian Steve Beatty	Curtis Cheek Peter Weichsel Fred Stewart
Tulin	Gary Cohler, Capt Alan Sontag Kit Woolsey	Stanley Tulin Ralph Katz Bart Bramley
Wolfson	Jeff Wolfson, Capt David Berkowitz	Steve Garner Jeff Meckstroth



# Women's Teams Entered

Baker	Lynn Baker, Capt Kerri Sanborn Cecilia Dwyer Rimstedt [alternate] Debbie Rosenberg	Olivia Schireson Jill Meyers Sandra Rimstedt [alternate] Migry Campanile
Cooper	Kitty Cooper, Capt Linda Lewis Rozanne Pollack	Lynne Feldman Hjordis Eythorsdottir Cheri Bjerkan
Zhang	Susan Zhang, Capt Janice Molson	Sylvia Shi Irina Levitina



## Open Team Tournament Schedule

OPEN SCHEDULE			
Day	Date	Time (CDT)	Boards
Round of 16 (if 14-16 teams enter; fewer than 14 will be rr with different schedule)			
Wednesday	May 1	10:00 - 12:00 12:15 - 2:15  3:30 - 5:30 5:45 - 7:45	Segment 1 Boards 1-15 Segment 2 Boards 16-30 75 minute Lunch Break Segment 3 Boards 31-45 Segment 4 Boards 46-60
Thursday	May 2	10:00 - 12:00 12:15 - 2:15  3:30 - 5:30 5:45 - 7:45	Segment 5 Boards 1-15 Segment 6 Boards 16-30 75 minute Lunch Break Segment 7 Boards 31-45 Segment 8 Boards 46-60
Quarterfinal			
Friday	May 3	10:00 - 12:00 12:15 - 2:15  3:30 - 5:30 5:45 - 7:45	Segment 1 Boards 1-15 Segment 2 Boards 16-30 75 minute Lunch Break Segment 3 Boards 31-45 Segment 4 Boards 46-60
Saturday	May 4	10:00 - 12:00 12:15 - 2:15  3:30 - 5:30 5:45 - 7:45	Segment 5 Boards 1-15 Segment 6 Boards 16-30 75 minute Lunch Break Segment 7 Boards 31-45 Segment 8 Boards 46-60
Semifinal			
Sunday	May 5	10:00 - 12:00 12:15 - 2:15  3:30 - 5:30 5:45 - 7:45	Segment 1 Boards 1-15 Segment 2 Boards 16-30 75 minute Break Segment 3 Boards 31-45 Segment 4 Boards 46-60
Monday	May 6	10:00 - 12:00 12:15 - 2:15  3:30 - 5:30 5:45 - 7:45	Segment 5 Boards 1-15 Segment 6 Boards 16-30 75 minute Break Segment 7 Boards 31-45 Segment 8 Boards 46-60
Final			
Tuesday	May 7	10:00 - 12:00 12:15 - 2:15  3:30 - 5:30 5:45 - 7:45	Segment 1 Boards 1-15 Segment 2 Boards 16-30 75 minute Break Segment 3 Boards 31-45 Segment 4 Boards 46-60
Wednesday	May 8	10:00 - 12:00 12:15 - 2:15  3:30 - 5:30 5:45 - 7:45	Segment 5 Boards 1-15 Segment 6 Boards 16-30 75 minute Break Segment 7 Boards 31-45 Segment 8 Boards 46-60

Location: TBD

### Lovebridge practice sessions

Day	Date	Time (CDT)
Tuesday	April 30	5:00 PM - 7:00 PM
Thursday	May 9	5:00 PM - 7:00 PM
Saturday	May 18	5:00 PM - 7:00 PM
Wednesday	May 22	5:00 PM - 7:00 PM

### PRE-TOURNAMENT CAPTAINS & PLAYERS MEETINGS

On Zoom			
Event	Day	Date	Time (CDT)
Open	Tuesday	April 30	9:00 PM
Mixed	Thursday	May 9	9:00 PM
Senior	Saturday	May 18	9:00 PM
Women's	Monday or Wednesday	May 20 or 22	9:00 PM

## Mixed Team Tournament Schedule

Mixed Schedule			
Round Robin or KO - Schedule will depend on number of teams			
Day	Date	Time	Boards
Friday	May 10		
Saturday	May 11		
Quarterfinal			
Sunday	May 12	10:00 - 12:00 12:15 - 2:15  3:30 - 5:30 5:45 - 7:45	Segment 1 Boards 1-15 Segment 2 Boards 16-30 75 minute Break Segment 3 Boards 31-45 Segment 4 Boards 46-60
Monday	May 13	10:00 - 12:00 12:15 - 2:15  3:30 - 5:30 5:45 - 7:45	Segment 5 Boards 1-15 Segment 6 Boards 16-30 75 minute Break Segment 7 Boards 31-45 Segment 8 Boards 46-60
Semifinal			
Tuesday	May 14	10:00 - 12:00 12:15 - 2:15  3:30 - 5:30 5:45 - 7:45	Segment 1 Boards 1-15 Segment 2 Boards 16-30 75 minute Break Segment 3 Boards 31-45 Segment 4 Boards 46-60
Wednesday	May 15	10:00 - 12:00 12:15 - 2:15  3:30 - 5:30 5:45 - 7:45	Segment 5 Boards 1-15 Segment 6 Boards 16-30 75 minute Break Segment 7 Boards 31-45 Segment 8 Boards 46-60
Final			
Thursday	May 16	10:00 - 12:00 12:15 - 2:15  3:30 - 5:30 5:45 - 7:45	Segment 3 Boards 31-45 Segment 4 Boards 46-60 75 minute Break Segment 5 Boards 61-75 Segment 6 Boards 76-90
Friday	May 17	10:00 - 12:00 12:15 - 2:15  3:30 - 5:30 5:45 - 7:45	Segment 5 Boards 1-15 Segment 6 Boards 16-30 75 minute Break Segment 7 Boards 31-45 Segment 8 Boards 46-60

### "PUN" ishment...

I just signed up for a reverse Origami class. I can't wait to see how things unfold!

A soldier who survived mustard gas and pepper spray is now a seasoned veteran.

I stayed up all night to see where the sun went. Then it dawned on me.

They told me I had Type A blood... but it was a Type O! PMS jokes are not funny. Period!

Why were the Indians here first? They had reservations.

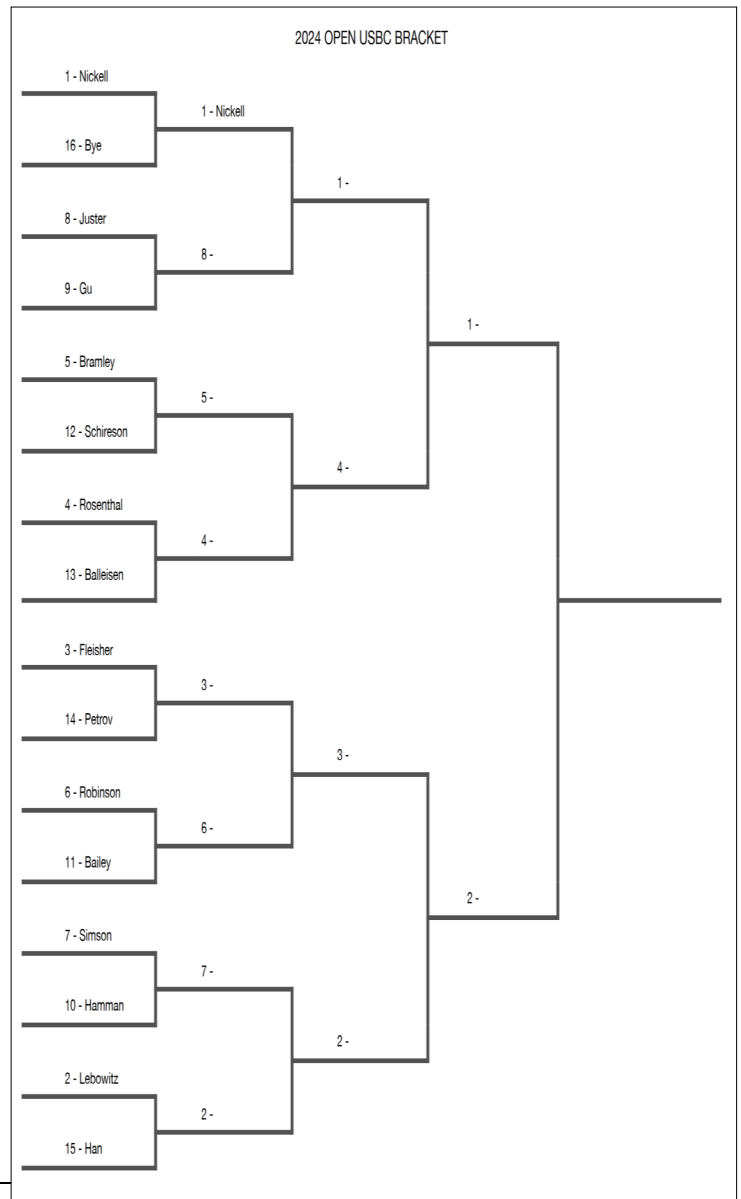
Energizer bunny arrested. Charged with battery!

When you get a bladder infection, urine trouble!



# Senior Schedule

SENIOR SCHEDULE			
Round Robin or KO - Schedule will depend on number of teams			
Day	Date	Time	Boards
Sunday	May 19		
Monday	May 20		
<b>Quarterfinal</b>			
Tuesday	May 21	10:00 - 12:00 12:15 - 2:15  3:30 - 5:30 5:45 - 7:45	Segment 1 Boards 1-15 Segment 2 Boards 16-30 75 minute Break Segment 3 Boards 31-45 Segment 4 Boards 46-60
Wednesday	May 22	10:00 - 12:00 12:15 - 2:15  3:30 - 5:30 5:45 - 7:45	Segment 5 Boards 1-15 Segment 6 Boards 16-30 75 minute Break Segment 7 Boards 31-45 Segment 8 Boards 46-60
<b>Semifinal</b>			
Thursday	May 23	10:00 - 12:00 12:15 - 2:15  3:30 - 5:30 5:45 - 7:45	Segment 1 Boards 1-15 Segment 2 Boards 16-30 75 minute Break Segment 3 Boards 31-45 Segment 4 Boards 46-60
Friday	May 24	10:00 - 12:00 12:15 - 2:15 3:30 - 5:30 5:45 - 7:45	Segment 5 Boards 1-15 Segment 6 Boards 16-30 75 minute Break Segment 7 Boards 31-45 Segment 8 Boards 46-60
<b>Final</b>			
Saturday	May 25	10:00 - 12:00 12:15 - 2:15  3:30 - 5:30 5:45 - 7:45	Segment 1 Boards 1-15 Segment 2 Boards 16-30 75 minute Break Segment 3 Boards 31-45 Segment 4 Boards 46-60
Sunday	May 26	10:00 - 12:00 12:15 - 2:15  3:30 - 5:30 5:45 - 7:45	Segment 5 Boards 1-15 Segment 6 Boards 16-30 75 minute Break Segment 7 Boards 31-45 Segment 8 Boards 46-60



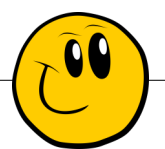
Beth Palmer WOMEN'S SCHEDULE			
Round Robin or Quarterfinal if 5-8 teams enter - schedule will depend on number of teams			
Day	Date	Time	Boards
Tuesday	May 21		
Wednesday	May 22		
<b>Semifinal</b>			
Thursday	May 23	10:00 - 12:00 12:15 - 2:15  3:30 - 5:30 5:45 - 7:45	Segment 1 Boards 1-15 Segment 2 Boards 16-30 75 minute Break Segment 3 Boards 31-45 Segment 4 Boards 46-60
Friday	May 24	10:00 - 12:00 12:15 - 2:15  3:30 - 5:30 5:45 - 7:45	Segment 5 Boards 1-15 Segment 6 Boards 16-30 75 minute Break Segment 7 Boards 31-45 Segment 8 Boards 46-60
<b>Final</b>			
Saturday	May 25	10:00 - 12:00 12:15 - 2:15  3:30 - 5:30 5:45 - 7:45	Segment 1 Boards 1-15 Segment 2 Boards 16-30 75 minute Break Segment 3 Boards 31-45 Segment 4 Boards 46-60
Sunday	May 26	10:00 - 12:00 12:15 - 2:15  3:30 - 5:30 5:45 - 7:45	Segment 5 Boards 1-15 Segment 6 Boards 16-30 75 minute Break Segment 7 Boards 31-45 Segment 8 Boards 46-60

# Beth Palmer Women's Schedule

**PUNs...**

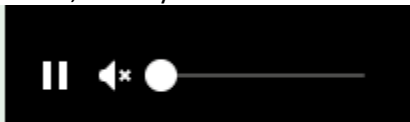
I wanted to be an astronaut but my parents told me the sky was the limit!

I was sure my 5th grade science project would win first place. It was a planetarium style light show of 88 patterns of the stars, Andromeda to Vulpecula. However, the judges, though impressed, ruled that my presentation was not true astronomy and did not qualify as science. Other students won 1st through 3rd places. I got a constellation prize!



## 2024 USBCs Kibitzing - There will be delayed kibitzing for all of the 2024 USBCs on LoveBridge

You can follow the USBC on the <https://vugraph.lovebridge.com/> website. If you get to the voice commentary and there is no sound, you need to "unmute." When you first get to the page, there is a small icon of a speaker in the middle of your screen with an x on it. Click there to unmute. If you miss that icon, move your cursor to the bottom left of the screen and you should see a something like this:



Click on the speaker to unmute.

Vugraph is delayed for 30 minutes or until all tables have completed play on a board, whichever is later.

### Kibitzing Schedule (EDT)

For all KO days of the 2024 USBCs, kibitzing times will be :

Segment 1: 11:30 am EDT; Segment 2: 1:45 pm EDT

BREAK

Segment 3: 5:00 pm EDT; Segment 4: 7:15 pm EDT

For Round Robin days, each kibitzing segment will start 30 minutes after play starts. No voice for RR's.

To listen to commentary, search for the TV icon! It will send you to the page where you can choose from the available live commentators. If it doesn't do anything, no one is commenting.

**Deep Involvement:** Choose the "Match view" at the starting page of your event. Your screen will be divided into 4 small screens – 2 of them showing the 2 tables of the match you choose, the other 2 having the scoresheet for your match and the current scores of the other matches. In the 2x2 view you can personalize the content in all your windows. (The 2x2 view is not available on mobiles.)

### Think together!

When watching a table, click on a name and choose "Kibitz". Instead of seeing all 4 hands, you will see what the player sees, and you can decide what you would do.

### More Information:

Be well informed and tell your friends: while following the play, you can click many items. The image of the sticker with the number of the board (upper right) takes you to the results of the board, in the bottom right corner, the arrow takes you to the scoresheet, the DDS shows the double dummy analyses, beside that there is a button for the other table of the same match, at the top left corner you can see the bidding with alerts and the explanations (mouse over), the tricks already played, and the double dummy analysis for the available number of tricks with the par score.

### Navigation icons:

While surfing here and there in the vugraph, or amongst the archive sessions, there are icons to help you. You can always go back to the main page with the "house" or to the standings with the "scores". If you cannot see the icons, move your mouse, or touch your screen and they pop up immediately. There is a built-in back button because the back button of your browser will always take you to the starting page. If this is not what you wanted, push next in your browser and you can continue where you were.

### Replay:

After the event you can find every board from every table easily. While replaying the hands, the only surprise can be the way "next board" button works. If you have arrived from a scoresheet, it navigates through the scoresheet. If you have arrived from a screen where the results were shown for a given board, the same buttons move you through the list.



Players like Cohler  
Make VuGraph  
exciting.

Will he redouble?  
The wait's nail-biting!

Will he be tempted  
To bid up a grand?  
Will Lefty lead wisely  
To defeat the hand?

Or will he be simple  
And lead out a  
trump?  
And Cohler succeeds  
And Lefty's a chump!



# Kibitzing...

## 2024 USBCs Hospitality

We are returning to our pre-pandemic hospitality, with the hospitality suite (room 2321) open most of the day for socializing, Vugraph, and snacks. We will be providing breakfast and lunch each **day of play**. Marie-France Benoit will be our lead hostess, with help from Jacob Morgan and Julie Arbit, who makes the best guacamole. If you're at the tournament and can volunteer to help with hospitality (pick up items at Costco or nearby stores or restaurants, preparing food) please let Jan or Marie-France know.

**Breakfast:** From 8-10 am. There will be the usual breakfast food: cereal, bagels, toast, salmon, fruit, juice, coffee and tea. For those who prefer Keurig coffee, that will be available. So long as the suite doesn't become too crowded, you are welcome to eat there. No masking requirement.

**Lunch:** On the first four days of each event we will be serving a buffet lunch in a hotel banquet room, usually the Slate and Cyan rooms at the front of the hotel; we will have signs in the Player Break Room and Hospitality Suite with daily location. The hotel will be supplying what they do best: salads and chips. We will be bringing in 2 or 3 hot dishes from a local restaurant each day. There should be enough room for you to eat in the hotel banquet room, but you are welcome to take food from there to an outside table or to your hotel room. Lunch will be served from about half an hour before the morning session is supposed to end until about half an hour after the afternoon session starts.

After the first 4 days of each event, lunch will be available in the hospitality suite at the break. There will be a main dish (sandwiches, chicken, main dish salads, pizza) as well as tuna salad, green salad, cheese, fruit, berries, cookies or other desserts. Water and soft drinks will be available in refrigerators. As with breakfast, you are welcome to eat in the hospitality suite unless it is too crowded.

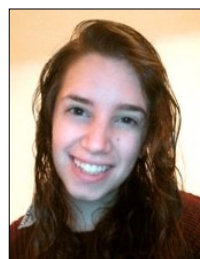
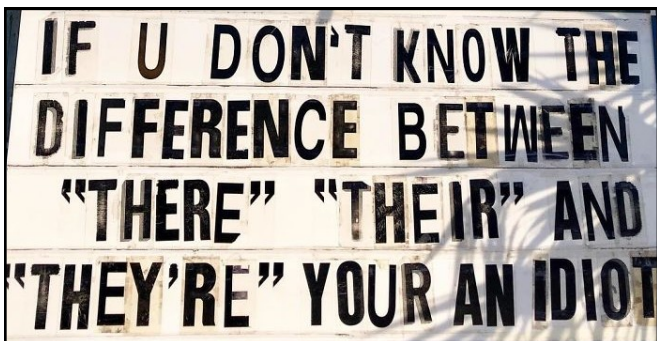
**Let us know if** you have specific needs. Our hosts will do their very best to accommodate you.

### Playing Rooms & Player's Break Room

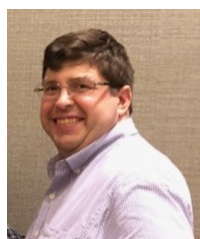
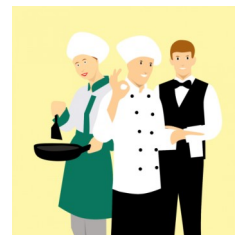
We will have bottled water in the playing rooms and if there is a refrigerator in a playing room we'll stock it with soft drinks.

We will have bottled water in the Player's Break Room (1321), as well as soft drinks, Nespresso, some packaged snacks, and some fruit. Please keep your voices down in the Break Room where we are working.

Masks will be required in playing rooms **only if your screenmate asks you to wear one**. You do not have to put on a mask when you summon a director or ask for coffee, water or an escort outside to smoke.



Julie Arbit



Jacob Morgan



Marie-France



## Some Nearby Suggestions For Your Dining Pleasure



### Chicago Prime Italian Restaurant

\$\$\$ · Italian

700 N Meacham Rd

Elegant, locally owned venue offering a menu of Italian dishes, plus a seasonal patio.

Dine-in·Curbside pickup·No-contact delivery

### Morton's The Steakhouse

\$\$\$\$ · Restaurant

1470 McConnor Pkwy · In Windy Point

4:30PM

Upscale chain for aged prime beef, seafood & other traditional steakhouse fare in a clubby space.

Dine-in·Curbside pickup·Delivery

### Seasons 52

\$\$ · New American

1770 E Higgins Rd

Rotating menu of seasonal American dishes alongside international wines in an upscale setting.

Dine-in·Curbside pickup·No delivery

### Weber Grill Restaurant & Academy

\$\$\$ · Restaurant

1010 N Meacham Rd

Boisterous, rustic American hideaway serving up kettle-cooked steaks, burgers & ribs.

Dine-in·Curbside pickup·No-contact delivery

### Shaw's Crab House

\$\$\$ · Seafood

1900 E Higgins Rd · In the Streets of Woodfield

Suburban version of the upscale city seafood restaurant with traditional decor & an oyster bar.

Dine-in·Curbside pickup·No-contact delivery

### Wildfire

\$\$\$ · Steak

1250 E Higgins Rd

"**Best dining** experience in Schaumburg!"

Dine-in·Curbside pickup·No-contact delivery

### City Works - Schaumburg

\$\$ · Restaurant

1850 E Golf Rd

"Outdoor dining was great different options of seating."

Dine-in·Curbside pickup· No-contact delivery

### Stonewood Alehouse

\$\$ · American

601 Mall Dr

Spacious contemporary alehouse serves up draft micro-brews & wood-fired meals in a lodgelike venue.

Dine-in·Curbside pickup·Delivery

### Bahama Breeze

\$\$ · Caribbean

406 E Golf Rd · In Woodfield Plaza

Laid-back chain eatery featuring Caribbean entrees & tropical cocktails amid beachy decor. Dine-in·Curbside pickup·No delivery

### Westwood Tavern

\$\$ · Grill

1385 N Meacham Rd · In Woodfield Village Green

"Patio dining available."

Dine-in·Curbside pickup·Delivery

### Granite City Food & Brewery

\$\$ · American

801 Plaza Dr

Casual chain eatery with an American comfort-food menu plus craft beers brewed on-site.

Dine-in·Curbside pickup·Delivery

### Chicago Prime Steakhouse

\$\$\$ · Steak

1444 E Algonquin Rd · In The Shoppes at Prime Village

"Unbelievable **dining experience!!**"

Dine-in·Curbside pickup·No-contact delivery

### The Capital Grille

\$\$\$\$ · Fine Dining

2000 E Golf Rd

Opens 5PM

Outpost of the upscale steakhouse chain offers classic American fare & a clubby, refined setting.

Dine-in·Curbside pickup·No delivery

### Kuma's Corner Schaumburg

\$\$ · American

1570 E Golf Rd · In Woodfield Village Green

American eatery with a wraparound bar & patio for burgers piled with toppings, plus craft beer.

Dine-in·Curbside pickup·No-contact delivery

(Continued from page 7)

**Maggiano's Little Italy**  
\$\$ · Restaurant  
1901 Woodfield Rd · In the Streets of Woodfield  
Semi-upscale chain for classic Italian fare served family-style in a relaxed, polished space. Dine-in·Curbside pickup

**LongHorn Steakhouse**  
\$\$ · Steak  
1901 E Golf Rd  
"Very nice dine , always it's a pleasure to eat at Long-horn"  
Dine-in·Curbside pickup·No delivery

**Meze Mediterraneo**  
Mediterranean  
680 Mall Dr  
Rustic Mediterranean fare in an elevated dining room with bar seating & contemporary interiors.  
Dine-in·Curbside pickup·No delivery

**Benihana**  
\$\$\$ · Japanese  
1200 E Higgins Rd  
Hibachi chain serving Japanese dishes grilled tableside by theatrical chefs.  
Dine-in·Curbside pickup·No-contact delivery

**Texas de Brazil**  
\$\$\$ · Steak  
5 Woodfield Mall Ste D312 · In Woodfield Mall  
Dine-in·Curbside pickup·Delivery

**Bonefish Grill**  
\$\$ · Seafood  
180 S Roselle Rd  
Contemporary grill chain offering a seafood-centric menu, plus steaks & cocktails.  
Dine-in·Curbside pickup·No-contact delivery

This list is pretty recent and indicates pickup or delivery. Some of your old haunts from past Championships may have closed since the start of the Pandemic.

Several of these listings are across the street in Woodfield Shopping Mall. These listings do not include phone numbers but with the information here, you should be able to research that on your cell if you want to make reservations.

(More dining options with outdoor dining designations on pages 18 through 21)

## Where to Shop in the Area...

**Woodfield Mall**  
5 Woodfield Mall · (847) 330-1537  
Open · Closes 6PM  
In-store shopping·In-store pickup

**Style Encore - Schaumburg**  
Consignment shop  
1402 N Roselle Rd · In Remington Plaza · (847) 874-7184  
Open · Closes 6PM  
In-store shopping·Curbside pickup

**Streets of Woodfield**  
601 N Martingale Rd · (630) 954-7300  
Open · Closes 10PM  
In-store shopping

## Kibitzer Activities...

**Heritage Farm**  
201 S. Plum Grove Road, Schaumburg · 847-985-2102  
Step back into the 1880s for a look at when Schaumburg was a rural German farm community. On a visit to Volkening Heritage Farm, you can help with seasonal farm chores, participate in family activities and games of the 1880s or simply visit the livestock and soak in the quiet.

Authentically dressed interpreters welcome and guide visitors through the site.

### Hours of Operation

- Visitor Center/Museum Store/Farmhouse - Wed.-Sun., 10 a.m.-4 p.m.
- Farm Grounds & Trails - Daily, 8 a.m. to 8 p.m. Admission to Heritage Farm is FREE; however, during scheduled special events it may require an entrance fee.

## DISCOVER THE ART!

The **Chicago Athenaeum's International Sculpture Park** is situated on 20 acres of meadow, forest, and natural prairie on the grounds of the Robert O. Atcher Municipal Center, 201 Schaumburg Court, Schaumburg,

### PARKING AT

Prairie Center For the Arts, 201 Schaumburg Ct

### HOURS

The International Sculpture Park is open daily from sunrise to sunset.

Tenace anyone?



# Hard Sudoku

## Sudoku Solutions on Page 22

	6	3			9	8	1	
								7
1	7			4				9
7								8
	9			8			3	
		1				5		
		5				9	7	
				3				
4		8				6		5

Sudoku 1

A FINE is a TAX for doing wrong while a TAX is a FINE for doing well

**A FRIEND SAID SHE DIDN'T UNDERSTAND CLONING**

**I TOLD HER THAT MAKES TWO OF US**

WHAT KIND OF MUSIC DO MUMMIES LISTEN TO?



WRAP

6:30 is the best time on a clock.

Hands down.

I'd tell you a chemistry joke, but I'm not sure if I'd get a reaction.



What do you call an exploding monkey?

**A BaBoom!**

Please be "scent" sitive! Many players have allergies and have trouble breathing when perfumed aromas are present! Thank you!!



		5						2
			9		3	6		
	2					9	1	7
	9	3		6	2			4
7	5	4			1			
						1		
4		7						
		9					2	3
	1					5		

Sudoku 2

# Puzzle Page ...

## Spring

Find and circle all of the words that are hidden in the grid.  
The remaining letters spell a message about Spring.

T L E M W O N S S S A R G L A  
G C Y C L A M E N S A L I L P  
G N G R O W T H R L L L L R S  
O Y I I D L S A R A I E S N N  
L A L N K A I E B E R R O H E  
F M L O A N F E S G M I P W W  
E N A E E E S F I U L R R A L  
I O B Q R A L E O E C S A B E  
R S T U B E S C D D F O S W A  
I A F I G R N N G L I N R H V  
S E O N N R A E O N I L C C E  
E S S O I D E W W B I R S B S  
S I N X R G E E O A A R M E G  
A Y F L P R O R N M L W P E O  
E T E W S S P I L U T R S S R  
R E T S A E P L A N T I N G F

ALLERGIES  
APRIL  
BASEBALL  
BEES  
CROCUSES  
CYCLAMENS  
DAFFODILS  
DANDELIONS  
EASTER  
EQUINOX  
FLOWERS

FROGS  
GOLF  
GRASS  
GREEN  
GROWTH  
IRISES  
LILIES  
MARCH  
MAY  
NEW LEAVES  
PLANTING

RAIN  
RENEWAL  
ROBINS  
SEASON  
SNOWMELT  
SOFTBALL  
SPRING BREAK  
SPRING CLEANING  
TULIPS  
WARMER  
WET

I was in my garden this morning planting my herbs in alphabetical order.

My neighbor looked out through her window and said, "Wow! I don't know how you find the time!"

I said, "That's easy... It is right next to the sage!"



Put your heart in the game!



My tail,  
It is full of fluff.  
When I get  
A ruff and sluff!

# 8th World Youth Transnational Championships

## 8<sup>th</sup> World Youth Transnational Championships Wroclaw, Poland • 13 - 18 July, 2024



We are pleased to announce that the World Youth Transnational Championships will be held at the Hotel GEM, Wroclaw, Poland from 13th – 18th July 2024, immediately following the European National Youth Teams to be held at the same venue.

The Championships will have five separate series – U16, U21, U26 (open), U26 (women) and U31 in both Teams and Pairs.

There will be 3 days of Teams competition, 13-15 July, followed by 3 days of Pairs competition, 16-18 July.

The format of the Teams event will depend on the number of participating teams in each of the five categories, with the intention that all teams will play in the main event for the full duration if at all possible.

The format of the Pairs event will also depend on the number of participating pairs in each category, with the default being two days of qualification followed by one day of Finals A and B as was the case in the most recent editions.

Details regarding accommodation will be published as soon as possible.



The Championships consist of 5 Series: U16, U21, U26 Women, U26 Open & U31. Registrations must be submitted electronically via the WBF Website by June 9th. Late entries may be accepted for operational convenience at the discretion of the Championship Committee.

Schedule of play	Registration Teams	Friday 12 <sup>th</sup> July	
	Captains' meeting	Friday 12 <sup>th</sup> July	
	Teams Championships	Saturday 13 <sup>th</sup> to Monday 15 <sup>th</sup> July	
	Registration Pairs	Monday 15 <sup>th</sup> July	
	Teams Championships Prize-Giving & Opening Ceremony	Monday evening, 15 July	
	Pairs Championships	Tuesday 16 <sup>th</sup> to Thursday 18 <sup>th</sup> July	
	Pairs Championships Prize-Giving & Closing Ceremony	Thursday 18 <sup>th</sup> July	

## World Bridge News and Info

The **Bermuda Bowl**, **Venice Cup**, **d'Orsi Senior Bowl** and the **Wuhan Cup** are for national teams, respectively Open Women, Seniors and Mixed, representing their countries, qualified from the 8 WBF Zonal Conferences.

The **World Transnational Open Teams** is **open**, without any qualification, to all teams, national or transnational, which want to participate, accordingly to the conditions of contest.

The **World Bridge Teams Championships**, the oldest WBF Championship, grew out of private initiatives principally by the late Norman Bach. The first world championship for the Bermuda Bowl was held in 1950, in Bermuda, 8 years before the World Bridge Federation itself was formed. After the first event of the series, the Bermuda Bowl developed into a regular challenge match between the USA and the winners of the European Championship, but in 1957 the contest widened to included teams representing other zones of the WBF.

In 1974, in Venice, Italy, a new event was launched, the Venice Cup. It started as a challenge match between women's teams from the USA and Italy (Europe 's representative) and today it is the equivalent of Bermuda Bowl for women, organized under the same laws and format.

A third series, the Senior Bowl, for senior players was added in 2001. Ernesto d'Orsi, Past President of the WBF and a member of the WBF Committee of Honor and the WBF Executive Council, presented the d'Orsi Seniors Trophy for the winners of this Championship at the World Teams Championships held in Brazil in 2009.

In March 2018 in Philadelphia the Executive Council added a fourth series for Mixed Teams starting from 2019 in Wuhan, China. This new event was named after the City of Wuhan which presented the prestigious trophy and provided, and will provide for the future editions, replicas for the winners.

Why Do Ghosts  
Like to Ride  
elevators?  
Because it Lifts  
Their spirits

I SWALLOWED  
A DICTIONARY.  
IT GAVE ME  
THESAURUS  
THROAT I'VE  
EVER HAD.

Burnt my  
Hawaiian pizza.  
Should have cooked it on  
aloha temperature.

# A Little Humor!

Singing in the shower is  
all fun and games until  
you get shampoo in your  
mouth.  
Then it becomes a  
soap opera.



What did the  
mama cow  
say to the  
baby cow?  
"It's pasture  
bedtime."



A Mexican magician tells  
the audience he will  
disappear on the count  
of 3. He says "uno,  
dos..." \*poof\* ... He  
disappeared without a  
tres.



I USED TO BE  
A BANKER  
BUT THEN I  
LOST INTEREST

NOT  
ALL MATH  
PUNS ARE  
TERRIBLE.  
JUST SUM.

A pun has not  
completely  
matured until it is  
full groan

# Logic Puzzle ...

		Directors					Titles					Countries							
		Ben Barrera	Don Daugherty	Eric Edwards	Gus Guzman	Lionel Lowe	Tim Tucker	Dreams of July	Harvest Sun	Jacky Steel	Milton Vale	Tearful Night	West of Eden	Belgium	Croatia	Iceland	Norway	Romania	Ukraine
Lengths	55 minutes																		
	60 minutes																		
	65 minutes																		
	70 minutes																		
	75 minutes																		
	80 minutes																		
Countries	Belgium																		
	Croatia																		
	Iceland																		
	Norway																		
	Romania																		
	Ukraine																		
Titles	Dreams of July																		
	Harvest Sun																		
	Jacky Steel																		
	Milton Vale																		
	Tearful Night																		
	West of Eden																		



A-Pun, A-Two,  
A-Three!

**Answer to Puzzle  
on page 22  
Bottom of Page**

Lengths	Directors	Titles	Countries
55 minutes			
60 minutes			
65 minutes			
70 minutes			
75 minutes			
80 minutes			

- Harvest Sun is 20 minutes shorter than Don Daugherty's film.
- The film with a running time of 75 minutes wasn't made in Belgium.
- Tim Tucker's film is 10 minutes longer than Harvest Sun.
- The film produced in Ukraine is 5 minutes shorter than Dreams of July.
- Tearful Night is 15 minutes longer than Lionel Lowe's film.
- Gus Guzman's film is either the movie produced in Norway or the film produced in Ukraine.
- Of Milton Vale and Ben Barrera's film, one was made in Norway and the other has a running time of 70 minutes.
- Of Tim Tucker's film and Lionel Lowe's film, one was made in Croatia and the other is West of Eden.
- Of the movie produced in Iceland and Tearful Night, one was directed by Tim Tucker and the other has a running time of 70 minutes.

# Meet the Players



**Steve Weinstein** is the youngest player on the Nickell team, and also the youngest player ever to win an NABC event (the Life Master Pairs in 1981 when he was 17). He has since won many other NABC events, as well 7 wins in the Cavendish pairs & 1st and 2nd in the World Open Pairs.

Steve has been married to Liz Davis since 1993 (they have been together since 1986). He lives in Andes NY “the middle of nowhere” with their dog, Luther, and Archie the cat.

After leaving Wall street in 2002, he pursued a career as a professional bridge and poker player. He won the Borgata winter open poker tournament in Atlantic City in 2009 but is primarily a cash game player.

He also is a partner in Bridgewinners.com and you can find many articles he has written here: <https://bridgewinners.com/article/author/steve-weinstein/>

Originally from Raleigh, North Carolina, **Frank "Nick" Nickell** lives in New York most of the time. Nick is the driving force behind the composition of one of the strongest ever bridge teams. An investment banker and entrepreneur, Nick wanted to put together a very good team in the early nineties. His then partner, Dick Freeman, suggested that Bob Hamman/Bobby Wolff and Jeff Meckstroth/Eric Rodwell were the two pairs needed. How right he was!

This group with Paul Soloway replacing Wolff in 1998, Zia replacing Soloway in 2008, and most recently Ralph Katz replacing Dick Freeman after Dick's passing proceeded to reel off an amazing run of results. They have reached the final of five of the last six Bermuda Bowls - beating Canada in the 1995 final in Beijing, Brazil in Bermuda in January, 2000, and Italy in Monte Carlo in 2003 and Sao Paulo in 2009, losing to the French in Hammamet in 1997 and to Italy in Estoril in 2005. They have also won too many US titles to list. Playing with Hamman, Nick won the Cavendish Invitational Pairs in 1998. He is a WBF Grand Master, ranking 10th in the current standings.



Business and family commitments leave Nick very little time to play between major tournaments, but he and Ralph Katz practice regularly online at RealBridge, playing against their teammates and others.

Nick has a lovely wife, Carol, and two wonderful and wonderfully talented sons... one, an amazing concert pianist!

Nick has a passion for “wish tricks” and a special way of making them happen!

The Nickell team is committed to Bridge and it is not surprising they are the one-seed! Their RealBridge sessions not only contribute to team bonding, but also, give them an opportunity to iron out issues with their systems and keep their notes fresh. While they seriously miss their “Koach,” they are doing their best to make him proud!

It's rewarding and meaningful to see and feel their dedication to the game. They are always learning and improving. They are wonderful sports and all take the blame when something goes wrong.

They are amazing role models for young and old players! Their high ethics and positive attitude make the game fun!



## ABOUT SCHAUMBURG:

Located just 30 miles outside Chicago and about 11 miles west of O'Hare International Airport, Schaumburg is arguably a premier suburban business destination in Illinois. In the past 60 years, Schaumburg has transformed from a small farming community into a thriving economic center that is home to more business in Illinois than any other community outside of Chicago. The village's businesses provide support to the community's 78,000 residents, 80,000 employees and the northwest suburbs.

Residents and visitors can attend a concert or the Farmers Market in the Town Square, take in theater and other shows at the Al Larson Prairie Center for the Arts, visit the Trickster Cultural Center (Native-owned and operated art gallery), discover family fun at Legoland Discovery Center, or enjoy independent league baseball at Wintrust Field. And, the Schaumburg Township District Library is the second-largest public library in Illinois, with more than one million visitors each year.

### History

The Village of Schaumburg was incorporated on March 7, 1956, but the heritage of Schaumburg dates back to the much earlier times when the first inhabitants of the area were members of the Sauk, Fox, Pottawatomie, and Kickapoo Indian tribes. Schaumburg's earliest residents were primarily German-speaking immigrants and their days consisted of farming, community and family. In many ways that remains true today, although now Schaumburg is a mecca of commercial activity.

### The First Settlers

By the mid-nineteenth century, settlers first began to arrive from Germany and the eastern United States. Legend has it that the earliest settler was Trumbull Kent from Oswego, New York. Kent, a "Yankee," as settlers from New England were called in the west, founded a settlement in 1835 not far from what is now called Olde Schaumburg Centre, formerly known as Sarah's Grove.

### The Sunderlage Family

The first recorded settler of Schaumburg Township was German-born Johann Sunderlage. According to legend, Sunderlage was a member of a survey team that divided Cook County into townships around 1833. He liked the area so much that, upon completion of the project, he brought his family from Germany and settled in the area around 1836.

Sunderlage and his family occupied their land in the Township until the federal land sale of 1842 allowed them to purchase the property and obtain the deed. Sunderlage and Kent represented the predominant groups that settled Schaumburg Township in its early days. In 1840, 56 percent of the Township households originated from the eastern United States, while 28 percent were German-born. By the 1850s, the population mix had settled to 28 percent "Yankee" and 48 percent German.

### German Settlers

By 1870, Schaumburg Township had become completely German. Land records show that all the property in the Township was owned by German immigrants or their descendants. This pattern emerged as many Yankee settlers continued to travel west for the promise of newly opened lands on the Great Plains. The land they occupied in Schaumburg was then purchased by German-born immigrants.

Schaumburg Township remained almost exclusively under German ownership until the Great Depression of the 1930s. The Depression caused the foreclosure on some German-owned farms which were then purchased by non-German individuals and companies. Nonetheless, German heritage remained important in the area. German was the first language of the majority of households until the 1950s. St. Peter Lutheran Church, the community's oldest church which was constructed in 1847, held services in German as late as 1970.

**92 TOWN**  
243 W GOLF RD  
Outdoor Dining: No

**BIBIBOP ASIAN GRILL**  
1022 N MEACHAM RD  
Outdoor Dining: No

**BRAZIL EXPRESS**  
1045 S ROSELLE RD  
Outdoor Dining: No

**\_CHARLEYS PHILLY STEAKS**  
VC03 WOODFIELD MALL  
Outdoor Dining: No

**\_CHIPOTLE MEXICAN GRILL**  
2558 W SCHAUMBURG RD  
Outdoor Dining: No

**AHI POKE**  
VC04 WOODFIELD MALL  
Outdoor Dining: No

**BIG BOWL**  
1950 E HIGGINS RD  
Outdoor Dining: No

**B'S SHRIMP AND FISH**  
1706 W WISE RD  
Outdoor Dining: No

**CHECKERS PANCAKE HOUSE**  
506 W WISE RD  
Outdoor Dining: Yes

**CHIQUITA GRILL**  
46 S MEACHAM RD  
Outdoor Dining: No

**ALI BABA KABAB**  
869 S ROSELLE RD  
Outdoor Dining: No

**BISI RESTAURANT**  
853 S ROSELLE RD  
Outdoor Dining: No

**\_BUFFALO WILD WINGS**  
1430 N MEACHAM RD  
Outdoor Dining: No

**\_CHICAGO PRIME ITALIAN**  
700 N MEACHAM RD  
Outdoor Dining: Yes

**CIELO MEXICAN GRILLE**  
1108 S ROSELLE RD  
Outdoor Dining: No

**AMORINO GELATO**  
K301 WOODFIELD MALL  
Outdoor Dining: No

**BLACKWOOD BBQ**  
1711 E GOLF RD  
Outdoor Dining: Yes

**BURGER KING**  
VC09 WOODFIELD MALL  
Outdoor Dining: No

**CHICAGO PRIME STEAKHOUSE**  
1444 E ALGONQUIN RD  
Outdoor Dining: Yes

**CINNABON**  
D203 WOODFIELD MALL  
Outdoor Dining: No

**ANDY'S FROZEN CUSTARD**  
390 N BARRINGTON RD  
Outdoor Dining: Yes

**BLAZE PIZZA**  
VC11 WOODFIELD MALL  
Outdoor Dining: No

**BURGER KING**  
1015 S ROSELLE RD  
Outdoor Dining: No

**CHICK-FIL-A**  
90 N BARRINGTON RD  
Outdoor Dining: No

**CINNAHOLIC**  
1404 E GOLF RD  
Outdoor Dining: No

**ARBYS**  
522 W GOLF RD  
Outdoor Dining: No

**BONCHON**  
1408 E GOLF RD  
Outdoor Dining: No

**BURRITO PARRILLA MEXI-CANA**  
720 E HIGGINS RD  
Outdoor Dining: Yes

**CHICK-FIL-A**  
935 E GOLF RD  
Outdoor Dining: No

**CITY WORKS EATERY AND POUR HOUSE**  
1850 E GOLF RD  
Outdoor Dining: Yes

**AUNTIE ANNES PRETZELS**  
E328 WOODFIELD MALL  
Outdoor Dining: No

**BONEFISH GRILL**  
180 S ROSELLE RD  
Outdoor Dining: Yes

**CAFE ZUPAS**  
1422 E GOLF RD  
Outdoor Dining: No

**CHILL BUBBLE TEA**  
KI-01 WOODFIELD MALL  
Outdoor Dining: No

**COFFEE HAUS**  
209 W GOLF RD  
Outdoor Dining: No

**AUNTIE ANNE'S PRETZELS**  
D103 WOODFIELD MALL  
Outdoor Dining: No

**BOSTON MARKET**  
24 W GOLF RD  
Outdoor Dining: No

**CALIFORNIA PIZZA KITCHEN**  
1550 E GOLF RD  
Outdoor Dining: No

**CHILL BUBBLE TEA**  
F319 WOODFIELD MALL  
Outdoor Dining: No

**COLD STONE CREAMERY**  
E102 WOODFIELD MALL  
Outdoor Dining: No

**BACOWKA / TERMINAL 5 CLUB**  
1120 S ROSELLE RD  
Outdoor Dining: No

**BRANDYS GYROS SCHAUMBURG**  
140 E GOLF RD B  
Outdoor Dining: No

**CHANDLER'S CHOPHOUSE GRILL & BANQUETS**  
401 N ROSELLE RD  
Outdoor Dining: Yes

**CHIPOTLE MEXICAN GRILL**  
VC01 WOODFIELD MALL  
Outdoor Dining: No

**COOKIES BY DESIGN**  
1332 N ROSELLE RD  
Outdoor Dining: No

**\_BAHAMA BREEZE**  
406 E GOLF RD  
Outdoor Dining: Yes

**BAWARCHI BIRYANIS**  
855 E SCHAUMBURG RD  
Outdoor Dining: No

**BB.Q CHICKEN**  
247 W GOLF RD  
Outdoor Dining: No

**BEAROLOGY**  
16 E GOLF RD E  
Outdoor Dining: No

**BEERHEAD BAR & EATERY**  
888 N MEACHAM RD  
Outdoor Dining: Yes

**BENIHANA OF TOKYO**  
1200 E HIGGINS RD  
Outdoor Dining: No

**BENJYEHUDA**  
1020 N MEACHAM RD  
Outdoor Dining: No

**Outdoor Dining in Schaumburg?**

MAY 2024							ARCHIVES
SUN	MON	TUE	WED	THU	FRI	SAT	
			1	2	3	4 VS. WINDY CITY THUNDERBOLTS (SPRING TRAINING) 1 p.m.	
5	6 @BOMBERS VS. MSL ALL-STARS (SPRING TRAINING) 7 p.m.	7 @BOMBERS VS. GARY RAILCATS (SPRING TRAINING) 11 a.m.	8	9	10 @ WASHINGTON WILD THINGS 6:05 p.m.	11 @ WASHINGTON WILD THINGS 6:05 p.m.	
12 @ WASHINGTON WILD THINGS 12:35 p.m.	13 @BOMBERS VS. TRI-CITY VALLEYCATS (HOME OPENER) 6:30 p.m.	14 @BOMBERS VS. TRI-CITY VALLEYCATS 6:30 p.m.	15 @BOMBERS VS. TRI-CITY VALLEYCATS 11 a.m.	16	17 @YALLO VS. FLORENCE YALLS 6:30 p.m.	18 @YALLO VS. FLORENCE YALLS 3 p.m.	
19	20	21 @BOMBERS @ JOLIET SLAMMERS	22 @BOMBERS @ JOLIET SLAMMERS	23 @BOMBERS @ JOLIET SLAMMERS	24 @BOMBERS VS. LAKE ERIE CRUSHERS 6:30 p.m.	25 @BOMBERS VS. LAKE ERIE CRUSHERS 3 p.m.	
26 @BOMBERS VS. LAKE ERIE CRUSHERS 6:30 p.m.	27	28 @ QUEBEC CAPITALES	29 @ QUEBEC CAPITALES	30 @ QUEBEC CAPITALES	31 @BOMBERS @ TROIS RIVIERES AIGLES 6:05 p.m.		

HOME AWAY TICKETS PROMOTIONS

**Schaumburg Bombers Baseball Squad**

Call the Bombers Box Office at [847-461-3695](tel:847-461-3695)

CORNER BAKERY 1901 WOODFIELD RD Outdoor Dining: No	DUNKIN DONUTS 2263 W SCHAUMBURG RD Outdoor Dining: No	FIVE GUYS BURGERS & FRIES 1424 N MEACHAM RD Outdoor Dining: No	HAROLDS CHICKEN 1318 N ROSELLE RD A Outdoor Dining: No	JIMMY JOHN'S 66 E GOLF RD Outdoor Dining: No
COUNTY DONUTS 1218 S ROSELLE RD Outdoor Dining: No	DUNKIN DONUTS 893 E SCHAUMBURG RD Outdoor Dining: No	FORTUNE HOUSE 2211 W SCHAUMBURG RD Outdoor Dining: No	HAVMOR ICECREAM 1909 W GOLF RD Outdoor Dining: No	JIMMY JOHN'S 584 S ROSELLE RD Outdoor Dining: No
CRUMBL COOKIES 106 E GOLF RD Outdoor Dining: No	DUNKIN DONUTS BASKIN ROBBINS 477 W GOLF RD Outdoor Dining: No	FOX AND HOUND 1416 N ROSELLE RD Outdoor Dining: No	HONEST 835 W HIGGINS RD Outdoor Dining: No	JIMMY JOHN'S 1420 N MEACHAM RD Outdoor Dining: Yes
CULVERS OF SCHAUMBURG 1800 W WISE RD Outdoor Dining: Yes	EGG HARBOR CAFE 1310 AMERICAN LN Outdoor Dining: No	FRATO'S 628 S ROSELLE RD Outdoor Dining: No	HOOTERS 1110 PERIMETER DR Outdoor Dining: Yes	JOE'S PIZZA 530 W WISE RD Outdoor Dining: No
CULVERS RESTAURANT 1410 E ALGONQUIN RD Outdoor Dining: No	EGG MANIA 1133-1135 N SALEM DR Outdoor Dining: No	GARRETT POPCORN SHOPS KI-14 WOODFIELD MALL Outdoor Dining: No	HOT AND COLD MILK TEA 751 W GOLF RD Outdoor Dining: No	JOJO'S 1935 W GOLF RD Outdoor Dining: No
DAIRY QUEEN 520 S ROSELLE RD Outdoor Dining: No	EGG O HOLIC 829 W HIGGINS RD Outdoor Dining: No	GAYLORD FINE INDIAN CUISINE 555 MALL DR Outdoor Dining: No	HYATT REGENCY SCHAUMBURG 1800 E GOLF RD Outdoor Dining: Yes	KAFFEE STUBE 105 E SCHAUMBURG RD Outdoor Dining: No
DAN THAI 2251 W SCHAUMBURG RD Outdoor Dining: No	EINSTEIN BROS BAGELS 1422 N MEACHAM RD Outdoor Dining: No	GIORDANO'S 930 N MEACHAM RD Outdoor Dining: No	HYDERABAD HOUSE 1424 E ALGONQUIN RD Outdoor Dining: No	KENS SCHAUMBURG RESTAURANT 1477 W SCHAUMBURG RD Outdoor Dining: No
DARUMA JAPANESE RESTAURANT 1823 W GOLF RD Outdoor Dining: No	EL MERO MERO 34 W SCHAUMBURG RD Outdoor Dining: Yes	GLOBAL BREW TAP HOUSE 339 W GOLF RD Outdoor Dining: Yes	HYDERABAD HOUSE 825 W HIGGINS RD Outdoor Dining: No	KFC 1160 S ROSELLE RD Outdoor Dining: No
DESI TADKA 927 W GOLF RD Outdoor Dining: No	ENTERRIUM 2 WOODFIELD MALL A Outdoor Dining: No	GRANITE CITY FOOD & BREWERY 801 PLAZA DR Outdoor Dining: Yes	I HEART MAC N CHEESE VC08 WOODFIELD MALL Outdoor Dining: No	KNEAD BAKERY & CAFE 233 W GOLF RD Outdoor Dining: Yes
DOMINICKS VILLA ROSE PIZZERIA 1861 W GOLF RD Outdoor Dining: No	ESCAPE LOUNGE & SPORTS BAR 801 E ALGONQUIN RD Outdoor Dining: No	GRAVITEA 877 S ROSELLE RD Outdoor Dining: No	INCHINS BAMBOO GARDEN 1817 W GOLF RD Outdoor Dining: No	KOLACHI TANDOORI GRILL EXPRESS 937 S ROSELLE RD Outdoor Dining: No
DOMINO'S PIZZA 738 E SCHAUMBURG RD Outdoor Dining: No	ESTRELLA BAKERY 1077 N SALEM DR Outdoor Dining: No	GREAT AMERICAN COOKIE F305A WOODFIELD MALL Outdoor Dining: No	JAMBA JUICE 601 N MARTINGALE RD 310 Outdoor Dining: No	KONG DOG 1098 S ROSELLE RD Outdoor Dining: No
DONUT DROP 835 E ALGONQUIN RD Outdoor Dining: No	FALAFILL 1428 N MEACHAM RD Outdoor Dining: No	GREEN JOE COFFEE 1459 W SCHAUMBURG RD A Outdoor Dining: No	JERSEY MIKES SUBS 1257 E HIGGINS RD Outdoor Dining: Yes	KOREANA RESTAURANT 1123 N SALEM DR Outdoor Dining: No
DRINK 871 E ALGONQUIN RD Outdoor Dining: No	FALAFILL EAST MEDITERRANEAN KITCHEN VC02 WOODFIELD MALL Outdoor Dining: No	GUZMAN Y GOMEZ 795 E GOLF RD Outdoor Dining: No	JERSEY MIKES SUBS 108 E GOLF RD Outdoor Dining: No	KUMAS CORNER 1570 E GOLF RD Outdoor Dining: Yes
DUNKIN DONUTS 914 S ROSELLE RD Outdoor Dining: No	FAT ROSIE'S 870 N MEACHAM RD Outdoor Dining: Yes	HAKKA WOK 1851 W GOLF RD Outdoor Dining: No	JERSEY MIKES SUBS 2568 W SCHAUMBURG RD Outdoor Dining: No	KURA REVOLVING SUSHI BAR 1719 E GOLF RD Outdoor Dining: No
DUNKIN DONUTS 1440 N MEACHAM RD Outdoor Dining: No	FINN MCCOOL'S IRISH SPORTS PUB 1941 E ALGONQUIN RD Outdoor Dining: No	HANDSOME BAKERY & CAFE 204 E GOLF RD Outdoor Dining: No	JETS PIZZA 1847 W IRVING PARK RD Outdoor Dining: No	KURIMU 601 N MARTINGALE RD 165 Outdoor Dining: No
				LA MICHOACANA PALETERIA 2381 BODE RD Outdoor Dining: No



LA MICHOCACANA TRES HERMANOS G140 WOODFIELD MALL Outdoor Dining: No	MCCULLOUGH'S PUB & BILLIARDS 333 S ROSELLE RD Outdoor Dining: No	MUGS PIZZA & RIBS 24 W SCHAUMBURG RD Outdoor Dining: No	PANCHO'S TAQUERIA & CATERING 909 W WISE RD Outdoor Dining: No	POPEYES 1430 E ALGONQUIN RD Outdoor Dining: No
LA UNICA CAFE 1083 N SALEM DR Outdoor Dining: No	MCDONALDS 955 E GOLF RD Outdoor Dining: No	NAF NAF GRILL 1715 E GOLF RD Outdoor Dining: No	PANDA EXPRESS 100 E GOLF RD B Outdoor Dining: No	PORT OF PERI PERI 7 W WEATHERSFIELD WAY Outdoor Dining: No
LALO'S MEXICAN RESTAURANT 425 S ROSELLE RD Outdoor Dining: Yes	MCDONALDS 775 E ALGONQUIN RD Outdoor Dining: Yes	NAPOLI PER TUTTI 181 N BARRINGTON RD Outdoor Dining: Yes	PANDA EXPRESS J110 WOODFIELD MALL Outdoor Dining: No	PORTILLO'S HOT DOGS 611 E GOLF RD Outdoor Dining: Yes
LE MACARON FRENCH PASTRIES RMU94 WOODFIELD MALL Outdoor Dining: No	MCDONALDS 2545 W SCHAUMBURG RD Outdoor Dining: No	NEW DELHI RESTAURANT OF INDIA 30 S MEACHAM RD Outdoor Dining: No	PANDA EXPRESS 2519 W SCHAUMBURG RD Outdoor Dining: No	POTBELLY SANDWICH SHOP 880 N MEACHAM RD Outdoor Dining: Yes
LITTLE GREEK FRESH GRILL 130 E GOLF RD Outdoor Dining: No	MCDONALDS D201 WOODFIELD MALL Outdoor Dining: No	NOODLES & COMPANY 1400 N MEACHAM RD Outdoor Dining: No	PANERA BREAD 2415 W SCHAUMBURG RD Outdoor Dining: No	PRIYA INDIAN RESTAURANT 939 W WISE RD Outdoor Dining: No
LITTLE SICILY PIZZERIA & BAKERY 1407 W SCHAUMBURG RD Outdoor Dining: No	MCDONALDS 550 S ROSELLE RD Outdoor Dining: No	NOODLES & COMPANY 2610 W SCHAUMBURG RD Outdoor Dining: No	PANERA BREAD 830 N MEACHAM RD Outdoor Dining: Yes	QDOBA MEXICAN EATS 2602 W SCHAUMBURG RD Outdoor Dining: No
LONGHORN STEAKHOUSE 1901 E GOLF RD Outdoor Dining: No	MENCHIES 160 S ROSELLE RD D Outdoor Dining: No	OBERWEIS DAIRY 30 S ROSELLE RD Outdoor Dining: No	PAPA JOHNS PIZZA 16 E GOLF RD D Outdoor Dining: No	QDOBA MEXICAN EATS 1408 E GOLF RD B Outdoor Dining: No
LOS JUANES TAQUERIA 914 BODE RD Outdoor Dining: No	MEZE MEDITERRANEO 680 MALL DR Outdoor Dining: Yes	OISHI SUSHI 325 S BARRINGTON RD Outdoor Dining: No	PAPA JOHN'S PIZZA 2525 W SCHAUMBURG RD Outdoor Dining: No	RAISING CANE'S 1205 E HIGGINS RD Outdoor Dining: No
LOU MALNATI'S PIZZERIA 1 S ROSELLE RD Outdoor Dining: No	MILLERS ALE HOUSE 1300 N MEACHAM RD Outdoor Dining: Yes	OLD TOWN PIZZA CO 906 BODE RD Outdoor Dining: No	PERRY'S STEAKHOUSE 1780 E GOLF RD Outdoor Dining: Yes	RED LOBSTER 800 E GOLF RD Outdoor Dining: No
LOU MALNATI'S PIZZERIA 357 S BARRINGTON RD Outdoor Dining: No	MOD PIZZA 1731 E GOLF RD Outdoor Dining: No	OLIVE GARDEN 1925 E GOLF RD Outdoor Dining: Yes	PHAT PHAT 17 S ROSELLE RD Outdoor Dining: No	RED ROBIN GOURMET BURGERS J120 WOODFIELD MALL Outdoor Dining: No
MAGGIANO'S 1901 WOODFIELD RD Outdoor Dining: Yes	MOLLY'S CUPCAKES KI-12 WOODFIELD MALL Outdoor Dining: Yes	OMEGA RESTAURANT & PANCAKE HOUSE 1823 W WISE RD Outdoor Dining: No	PHO CAFE VC05 WOODFIELD MALL Outdoor Dining: No	RELISH CATERING KITCHEN 19 W WISE RD Outdoor Dining: No
MAMA MARIA AND SONS 245 S ROSELLE RD Outdoor Dining: No	MOMO CAFE F120 WOODFIELD MALL Outdoor Dining: No	OPOLSKA RESTAURANT 624 S ROSELLE RD Outdoor Dining: No	PHO DAY 756 E SCHAUMBURG RD Outdoor Dining: No	RICCARDO'S RESTAURANT 1170 S ROSELLE RD Outdoor Dining: No
MANNYS BURRITO EXPRESS 1433 W SCHAUMBURG RD Outdoor Dining: No	MORETTI'S RISTORANTE & PIZZERIA 1893 WALDEN OFFICE SQ Outdoor Dining: Yes	ORANGE & CHICKEN 1037 S ROSELLE RD Outdoor Dining: No	PILOT PETE'S 905 W IRVING PARK RD Outdoor Dining: No	RICHARD WALKER'S PANCAKE HOUSE 1300 N ROSELLE RD Outdoor Dining: Yes
MARIO'S PIZZA 522 S ROSELLE RD Outdoor Dining: No	MORTON'S THE STEAKHOUSE 1470 MCCONNOR PKY Outdoor Dining: No	OUTBACK STEAKHOUSE 216 E GOLF RD Outdoor Dining: No	PITA AND KABOBZ, INC. 1125 N SALEM DR Outdoor Dining: No	ROSATI'S PIZZA 1770 W WISE RD Outdoor Dining: No
MAXFIELDS PANCAKE & WAFFLE HOUSE 700 E SCHAUMBURG RD Outdoor Dining: No	MRS FIELDS & TCBY G119 WOODFIELD MALL Outdoor Dining: No	P F CHANG'S CHINA BISTRO D313 WOODFIELD MALL Outdoor Dining: Yes	PITA HOUSE RESTAURANT 300 W HIGGINS RD Outdoor Dining: Yes	ROSATI'S PIZZA 120 E GOLF RD Outdoor Dining: No
	MT BARRELS 1712 W WISE RD Outdoor Dining: No	PANCHOS BURRITOS 816 W GOLF RD Outdoor Dining: No	PIZZA HUT 2482 W SCHAUMBURG RD Outdoor Dining: No	ROTI MEDITERRANEAN GRILL 892 N MEACHAM RD Outdoor Dining: No



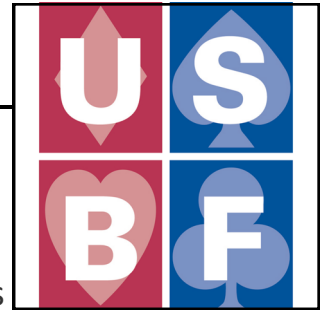
<b>SAKE SUSHI &amp; GRILL</b> 697 E GOLF RD Outdoor Dining: No	<b>SPRINKLES ICE CREAM SHOPPE</b> 1405 W SCHAUMBURG RD Outdoor Dining: Yes	<b>SUBWAY</b> 1427 W SCHAUMBURG RD Outdoor Dining: No	<b>TE'AMO BOBA BAR</b> 601 N MARTINGALE RD 320 Outdoor Dining: No	<b>VASCO'S PERI PERI</b> 927 S ROSELLE RD Outdoor Dining: No
<b>SAKURA SUSHI SCHAUMBURG</b> 175 W GOLF RD Outdoor Dining: No	<b>STAN'S DONUTS</b> VC12 WOODFIELD MALL Outdoor Dining: No	<b>SUBWAY</b> E111 WOODFIELD MALL Outdoor Dining: No	<b>TEXAS DE BRAZIL</b> D312 WOODFIELD MALL Outdoor Dining: No	<b>VILLAGE TAVERN &amp; GRILL</b> 901 W WISE RD Outdoor Dining: No
<b>SAMPURNA INDIAN FLAVOR</b> 847 E ALGONQUIN RD Outdoor Dining: No	<b>STARBUCKS</b> KI-06 WOODFIELD MALL Outdoor Dining: No	<b>SUKI HANA</b> VC10 WOODFIELD MALL Outdoor Dining: No	<b>TGI FRIDAYS</b> 1695 E GOLF RD Outdoor Dining: No	<b>WALKER BROS</b> 18 S ROSELLE RD Outdoor Dining: No
<b>SBARRO</b> G123 WOODFIELD MALL Outdoor Dining: No	<b>STARBUCKS</b> 395 S BARRINGTON RD Outdoor Dining: No	<b>SUPER CHINA BUFFET</b> 331 W GOLF RD Outdoor Dining: No	<b>THAI GARDEN</b> 225 W GOLF RD Outdoor Dining: No	<b>WEBER GRILL</b> 1010 N MEACHAM RD Outdoor Dining: No
<b>SCHAUMBURG INDIAN GRILL</b> 1301 AMERICAN LN Outdoor Dining: No	<b>STARBUCKS</b> 1837 W IRVING PARK RD Outdoor Dining: No	<b>SURF CITY SQUEEZE</b> E117 WOODFIELD MALL Outdoor Dining: No	<b>THE CAPITAL GRILLE</b> 2000 E GOLF RD Outdoor Dining: No	<b>WENDY'S</b> 1530 E ALGONQUIN RD Outdoor Dining: No
<b>SCHAUMBURG PUBLIC HOUSE</b> 1551 THOREAU DR Outdoor Dining: No	<b>STARBUCKS</b> 1261 E HIGGINS RD Outdoor Dining: No	<b>SUSHI TSUKI</b> 889 S ROSELLE RD Outdoor Dining: No	<b>THE CHEESECAKE FACTORY</b> F301 WOODFIELD MALL Outdoor Dining: No	<b>WENDY'S</b> 1750 E HIGGINS RD Outdoor Dining: No
<b>SEAFEST SUSHI</b> 35 W SCHAUMBURG RD Outdoor Dining: No	<b>STARBUCKS</b> 505 W GOLF RD Outdoor Dining: No	<b>SUSHI YA</b> 261 S ROSELLE RD Outdoor Dining: No	<b>THE HIDEOUT OF SCHAUMBURG</b> 1230 VALLEY LAKE DR D Outdoor Dining: No	<b>WENDY'S</b> 1871 W GOLF RD Outdoor Dining: No
<b>SEASONS 52</b> 1770 E HIGGINS RD Outdoor Dining: Yes	<b>STARBUCKS</b> 1080 S ROSELLE RD Outdoor Dining: No	<b>SWEET ORANGE PANCAKE HOUSE &amp; CAFE</b> 933 S ROSELLE RD Outdoor Dining: No	<b>THE LOCAL KITCHEN &amp; TAP</b> 1140 E HIGGINS RD Outdoor Dining: No	<b>WESTWOOD TAVERN &amp; TAP</b> 1385 N MEACHAM RD Outdoor Dining: Yes
<b>SHABU YOU JAPANESE BUFFET</b> 1180 PLAZA DR Outdoor Dining: No	<b>STARBUCKS</b> 1018 N MEACHAM RD Outdoor Dining: No	<b>SWEET SCHAUMBURG</b> 2523 W SCHAUMBURG RD Outdoor Dining: No	<b>THE MELTING POT RESTAURANT</b> 255 W GOLF RD Outdoor Dining: Yes	<b>WETZELS PRETZELS</b> F122 WOODFIELD MALL Outdoor Dining: No
<b>SHAKE SHACK</b> 1765 E GOLF RD Outdoor Dining: Yes	<b>STONEWOOD ALE HOUSE</b> 601 MALL DR Outdoor Dining: No	<b>SWEETGREEN</b> 1320 N MEACHAM RD Outdoor Dining: No	<b>TO PHO</b> 823 E ALGONQUIN RD Outdoor Dining: No	<b>WILDBERRY PANCAKES &amp; CAFE</b> 1383 N MEACHAM RD Outdoor Dining: Yes
<b>SHAW'S CRAB HOUSE</b> 1900 E HIGGINS RD Outdoor Dining: Yes	<b>SUBWAY</b> 1023 S ROSELLE RD Outdoor Dining: No	<b>SWEETLAND BAKERY CO</b> 726 E SCHAUMBURG RD Outdoor Dining: No	<b>TOKIO PUB</b> 1900 E HIGGINS RD Outdoor Dining: Yes	<b>WILDFIRE</b> 1250 E HIGGINS RD Outdoor Dining: No
<b>SIZZLING WOK</b> 837 E ALGONQUIN RD Outdoor Dining: No	<b>SUBWAY</b> 1400 N ROSELLE RD Outdoor Dining: No	<b>TACO BELL</b> 951 S ROSELLE RD Outdoor Dining: No	<b>TOPGOLF</b> 2050 PROGRESS PKWY Outdoor Dining: Yes	<b>WOK A HOLIC</b> VC07 WOODFIELD MALL Outdoor Dining: No
<b>SMASHBURGER</b> 1721 E GOLF RD Outdoor Dining: No	<b>SUBWAY</b> 708 E HIGGINS RD Outdoor Dining: No	<b>TACO BELL</b> 275 W GOLF RD Outdoor Dining: No	<b>TORIZEN</b> 22 E GOLF RD Outdoor Dining: No	<b>X-GOLF</b> 1100 AMERICAN LN Outdoor Dining: No
<b>SOGONG-DONG</b> 687 E GOLF RD Outdoor Dining: No	<b>SUBWAY</b> 824 W GOLF RD Outdoor Dining: No	<b>TACO MAYA</b> 365 S ROSELLE RD Outdoor Dining: No	<b>TOUS LES JOURS</b> 20 E GOLF RD Outdoor Dining: No	<b>YU'S MANDARIN RESTAURANT</b> 200 E GOLF RD Outdoor Dining: No
	<b>SUBWAY</b> 1708 W WISE RD Outdoor Dining: No	<b>TASTY NIHARI</b> 2255 W SCHAUMBURG RD Outdoor Dining: No	<b>UDUPI PALACE</b> 730 E SCHAUMBURG RD Outdoor Dining: No	
	<b>SUBWAY</b> 1414 E ALGONQUIN RD Outdoor Dining: No		<b>UNCLE JULIOS</b> F315 WOODFIELD MALL Outdoor Dining: Yes	

5	2	9	7	1	7	8	3	4
1	8	4	5	3	6	2	7	9
3	7	9	2	8	4	5	1	6
2	9	5	4	6	7	1	8	3
6	3	7	1	8	5	4	9	2
8	1	4	2	9	3	6	5	7
9	5	3	6	8	4	2	7	1
7	6	2	3	5	1	9	4	8
4	1	8	7	2	3	6	5	9

6	7	5	9	4	3	8	1	2
3	2	4	8	1	7	9	6	5
1	9	8	6	2	5	7	3	4
9	3	1	5	7	4	2	8	6
8	6	2	9	1	3	4	5	7
4	5	7	6	2	8	3	9	1
7	1	7	4	8	5	6	2	3
5	4	9	2	3	6	1	8	7
2	8	3	7	1	9	6	5	4

# Sudoku Answers Puzzles on Page 11

Answer to Sudoku 1      Answer to Sudoku 2



## USBF Supporting Membership

If you don't want to play in the USBF Championships that choose teams to represent the USA in the World Bridge Federation Championships, but do want to aid our events, a **Supporting Membership** can be the perfect way for you to be involved.

A Supporting Membership is \$25 for one year (\$75 for 3 years) and your donation will be used to cover inevitable expenses: attorney fees, accounting fees, website support services, tournament directors, insurance, WBF dues, and vugraph operators.

The USBF is an **all-volunteer** organization.

Our meetings are by conference call and at NABCS. Board members and the organization's officers are not compensated for meetings, travel, or hotel expenses.

### Fun Fact About Schaumburg:

Schaumburg might not be the most popular area in Illinois but it definitely attracted some productions to film within the area over the years. Some of the movies that shot scenes in places around Schaumburg were *Bad Teacher (2011)*, *Blood and Wine (1996)*, *Normal Life (1996)*, *White Out (2008)*, *Driver's Ed Mutiny (2010)*, and *The Founder*.

### Answer to Logic Puzzle

#### On Page 15

Norway	Milton Vale	Gus Guzman	80 minutes
Romania	Dreams of July	Don Daugherty	75 minutes
Ukraine	Tearful Night	Ben Barrera	70 minutes
Iceland	West of Eden	Tim Tucker	65 minutes
Belgium	Jacky Steel	Eric Edwards	60 minutes
Croatia	Harvest Sun	Lionel Lowe	55 minutes

# Limey Jack...

Gadzooks, Colonials:

You are at it yet again. Limey Jack will be fresh for the start, but a couple of fortnights hence, he will need a kip on the regular. One would think you blokes would be kind enough to finish early enough so that Limey Jack could be spared the all-nighters he thought he left at the Uni of Edenborough.

Alas, the big guns come out first; the United States Open Team Trials, heretofore known as the USBC.

Many squads have entered, few with as much hope as one of Pastor Rogere's detritus from eating a bean casserole in a force three gale. But handicap them, we must. Put a bob or two on all of Limey Jack's picks and give the punter fits. It's of a certain that Howie Dung, still woozy from his hibernation, will be blindly throwing darts as if he was at Houlihan's pub.

**Nickell** has a bye.

Juster-Gu: Limey Jack does not care for lesser lights banding together to save a few quid as is the situation on Juster. Gu has more solid players, but less established partnerships. Nonetheless, **Gu** prevails.

Bramley-Schireson: Whilst Limey Jack detests 4 handed groupings, **Bramley** will go far in this event. Schireson is 5 handed and suffers the same maladie as does Juster.

Rosenthal-Balleisen: **Rosenthal** is there to win, and Balleisen is there for seasoning, and so it shall be.

Fleisher-Petrov: All the participants who end with V are fine players. Limey Jack is unsure of the 4<sup>th</sup>. Be that as it may, **Fleisher** has gone all out to try to prevail, and for now they do.

Robinson-Bailey: In Limey Jack's opinion each of these misfitting teams should have stayed in their flats, but at least **Robinson** gets a second match.

Simson-Hamman: On this side of the Pond, partnerships are considered to be more important than raw talent, and both sextets have Limey Jack perplexed. On Simson, the only experienced partnership is Simson-Rodwell, and they will only play for 8 furlongs. Hamman, on the other hand, has broken up a long standing partnership for one half to play with Himself and one to play with another. One would be in serious need of a counselor if one chose against **Hamman**. While in his 90's the man can still drive a lorry at the table.

Lebowitz-Han: Han appears to be juniors in need of a smacking. **Lebowitz** has Zia and he alone will conquer them. Limey Jack notes with trepidation that M. Rosenberg is on the same team. As all know, Zia and Limey Jack are besties and if needed, Limey Jack can reach out and fix the issue should Zia be in harness with M. Rosenberg. One hates to see a repeat of him checking himself in to a behavioural ward.

Then, on the morrow with more ways to headlock your punter.



Look at the entries... so many new...  
Who are these people? Do they have a clue?

**Nickell** v Bye, picking's a song.  
If Bye should beat Nickell, we're seeded all wrong!

While Gu will go LOwer and Dwyer go higher,  
Ron Smith on Team **Gu** will come through at the wire.

Schireson/**Bramley?** To tell you the truth.  
Bart's years at the table trumps Shireson's youth!

Balleisen may prove to be really strong,  
But **Andrew** and crew will have less that goes wrong!

**Fleisher** beware! Petrov's underrated!  
Give them due credit or end up ill-fated!

**Howie Doing...**

Robinson/Bailey: a **Robinson** win,  
With new Hall of Famer on same team as Finn.

In Simson v Hamman, I want to pick Hinze.  
'Cause he's got the name I can rhyme up with "wins!"  
But Rodwell is back and he's gonna fight.  
Pickin' 'gainst **Simson** just don't feel right!

**Lebowitz/Han**... just who are we kidding?  
One must overplay when one's overbidding!  
Being aggressive can payoff quite well.  
That is the reason that I choose Team L!

Wishing you luck, much fun and good hands.  
Entertain us on VuGraph. Don't miss any grands!  
Till the QuarterFinals... I remain Howie Doing!

# Everything You Need to Know About LoveBridge and May Have Forgotten!

Just a Disclaimer... Some of the below may be obsolete with the new Chromebooks!\*

\*Jan says, "The only real changes from the pads to the Chromebooks involve the keyboard being part of the Chromebook and the larger screen. The biggest differences from previous years is each pair has its own time clock and will be shown their time remaining at the beginning of each hand, and a "STOP" button that a player can click on to stop play at both sides of the table when they are calling the director about something and it would be bad to have the other side of the table act before the director rules.

The directors have been testing the Chromebooks and advise that some of the screen display may be new to you! (see image at the bottom of page 29)

- **What does that number in the upper left mean?** You have unread chat message(s) and the strip at the left will be a sky blue until you read them (the number indicates how many unread messages are there). Click on the number/strip on the left to open/view. Click the X in top right corner to close. When all messages are read, the strip is grey.
- **Why can't I chat to my partner?** For security reasons, chat to partner is not available while cards for a new hand are on display. Since there is no "between round down time," there is no real partner chat.

## Bidding

- **The system won't let me pass!** If you have the level (1 through 7) highlighted, you will be unable to pass/double/redouble. If you try do so, the reset button will start flashing. Click the reset button to refresh.
- **Where is the undo button?** While there is no undo button, every call made is followed by a brief cancellation time period. A **cancel** button will appear immediately below the call selected in the top center portion of the screen. If you cancel within the time period, your bidding panel will reappear for you to select the intended call. If you do not cancel within the time period, summon a director (hit red TD whistle) to request an undo (second option).

## Play

1. **Why can't I click on a card?** The default setting for LoveBridge is neither a tap/click nor a double tap/click. The default setting is a drag-and-drop motion where the player pulls a card to the gray box in the center of the screen and releases to play the card. If the "pulled" card is not the intended one, the player can drag it back to the hand and select another card. **We recommend this setting while players are getting accustomed to the system.** Players may change this setting to double tap/click if desired, but we strongly discourage single tap/click settings.
2. **Whose turn is it?** In the bidding or play of the hand, the player's direction letter (N S E W) will be a white letter inside of the circle with a pale blue outer circle when it is the player's turn. The auction is always displayed so that you are on the very right and your hand is at the bottom.
3. **How do I claim?** During the play, you may click the larger blue box below the TD whistle to claim. If the claim button is grayed out (not available), you either already contributed a card to the current trick or you are dummy. (Note that you may not claim mid-trick. You may only claim between tricks.)
4. **How do I see the bidding once play has started?** Per the Laws of Duplicate Bridge, a player is not entitled to the entire auction once they have played to trick 1. If you have not yet played to trick one, the auction will be in the lower left corner. Click on it to enlarge to the center area. Click the double gray arrows in the bottom right of the center area to send it back to the corner. Similarly, this is how a player may see the cards from the previous trick (prior to playing to current trick).



# TABLET GUIDE

**CC CONVENTION CARD**

**SETTINGS**


You can set here the language, bidding and playing preferences anytime.

The system will remember your settings when you play next time.

**RESULTS**

You can review the previous boards anytime.

**CALL TOURNAMENT DIRECTOR**



You don't have to shout for a director, just click the button and select a reason for call. The first 2 reasons **stop play**.

In case of a misclick, don't panic! Call TDs and they will try their best to help you.

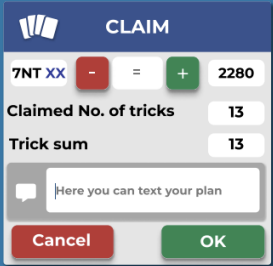
**MENU**



**COVER SCREEN**

To hide your screen from view, tap this icon.

**CLAIM**



Tap or to adjust number of tricks.

You can write your plan in the text field.



At the top left corner you will always see vulnerability and the dealer from your perspective (you are at the bottom).

You can tap on a bid to alert your calls or ask for information. You can even give written explanation.

**2♣ CANCEL**

If you misclick during the bidding, you have a few seconds to cancel bid. You can change this timeframe at Settings/Bid menu.

Live streaming: <https://vugraph.lovebridge.com>

For those of you who want a reminder from last year or are new to LoveBridge, here are some screenshots of what the tablet looks like at different times, with annotations about what you can do. I hope they help. If you played last year and don't need a review, please look at the 2 areas below that are marked with \*\*\* (Director calls and Chat) - LoveBridge made some changes to those for us.

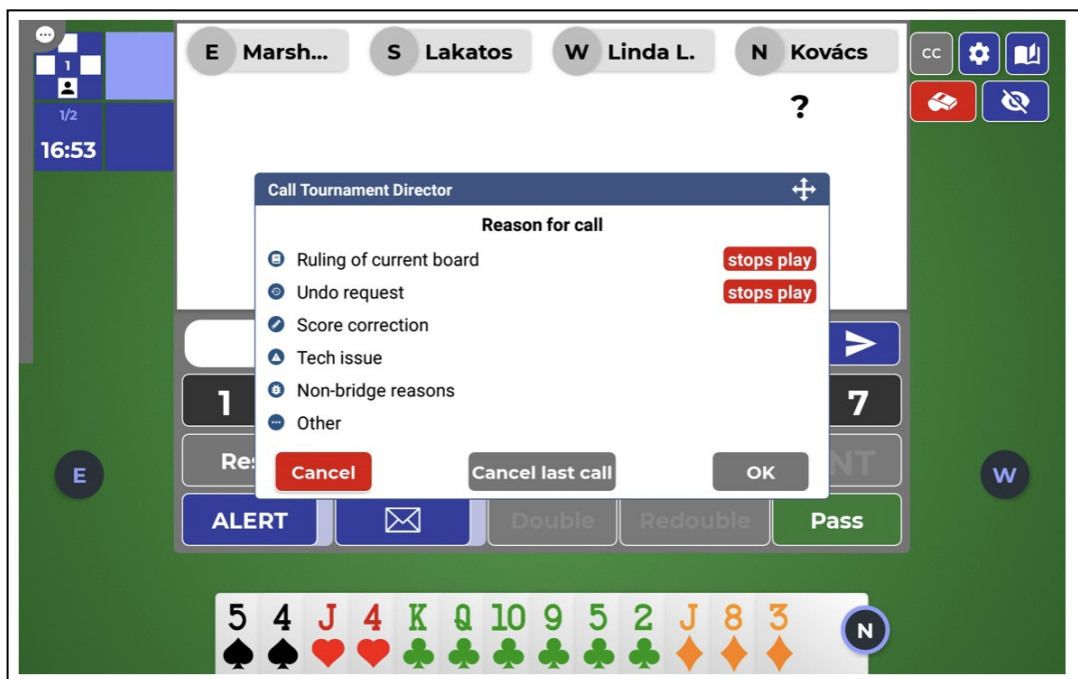
In addition, we will have some tablets set up in the bar area of the hotel lobby on Sunday afternoon & evening for you to practice on.

Here's what the tablet screen looks like right after you get your hand and before you have bid:



When you start to play on Monday, just call the director for any and all tablet-related issues.

\*\*\*One of the changes LoveBridge made for us for this year is a sub-menu that appears when you press the "Director" button so you can specify what the call is for:



# LoveBridge for Dummies...

If your call is for one of the top 2 reasons, play will stop at your table (including your partner's room). If your call is for one of the other reasons, someone (not necessarily a director) will come to your room to deal with the issue and play will continue at your table and your partner's table. Please select "Tech issue" for any tablet problems. Non-bridge is for an escort if you want to leave the room to smoke, a request for coffee, and things like that.

The CC button will open one PDF with the opponents' SSF and ACBL Convention card, as well as the ACBL Multi defense if your opponents are playing Multi. The SSF and Convention card are as of the closing date for System submission. If you make any changes to your convention card after today, they will only be displayed if you tell me that you have done so, in which case I will update what is loaded into LoveBridge.

### Explanations

Remember that even though you and your screenmate are in the same room so you can explain things verbally, you are still required to alert and/or explain your bids in writing on the tablet, so the opponent on the other side of the screen gets the information and we have a record of your alerts & explanations.

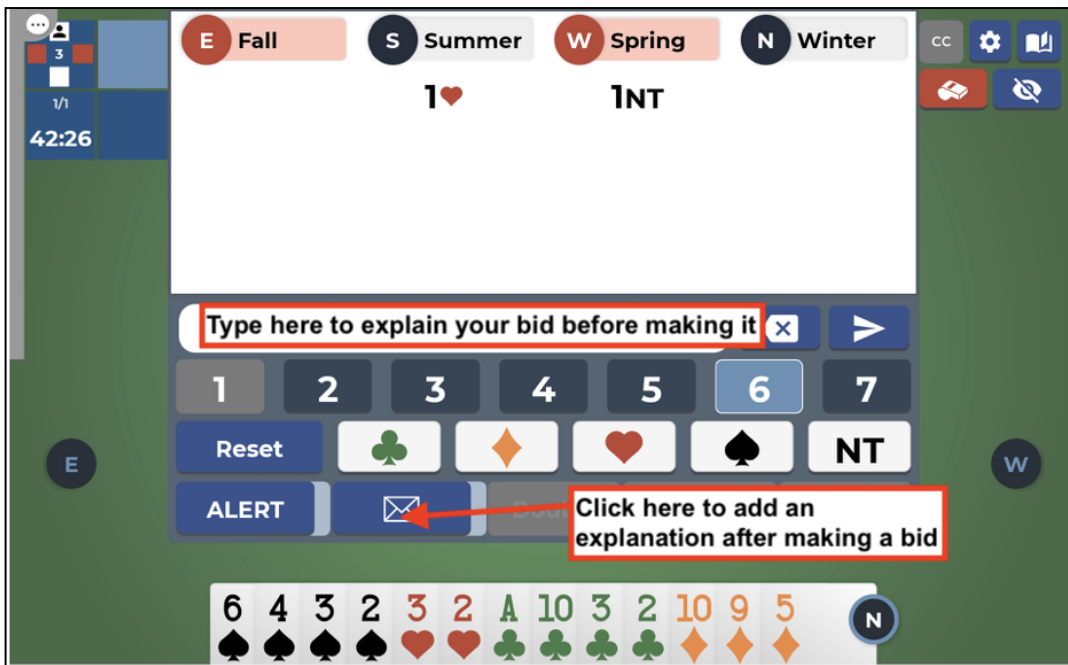
To make an explanation, you first need to access the keyboard. You do that when it is your turn to bid by clicking in the explanation box, which will open the keyboard for you. After you have made a bid, you can add an explanation by clicking on the envelope icon below the explanation box and then typing in the box.



Here's what the "Bridge Keyboard" looks like when "General" has been selected:



(continued on page 28)



Here's what the "Bridge Keyboard" looks like when "General" has been selected:

To get to the Android keyboard, click on the picture of the keyboard at the left of the bridge keyboard. To get to other bridge keyboards, click on one of the other buttons to the left and right of the keyboard.

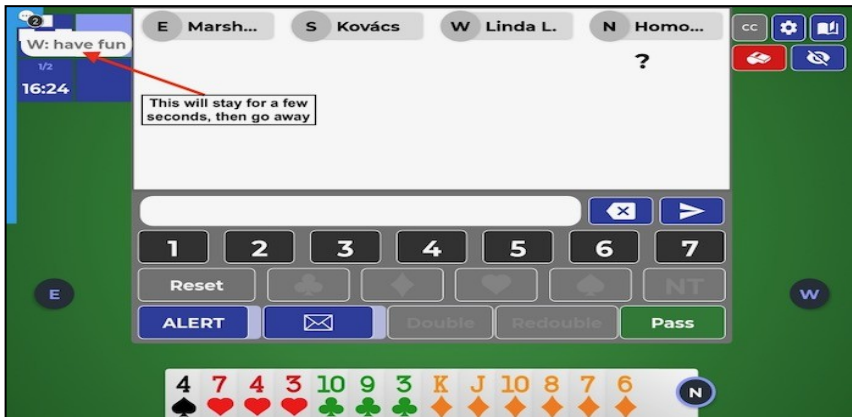
After you make a bid, you will have 3 seconds to cancel it. If you want to undo after the 3 seconds, you need to call the director and request an undo, which will only be granted in unusual situations.



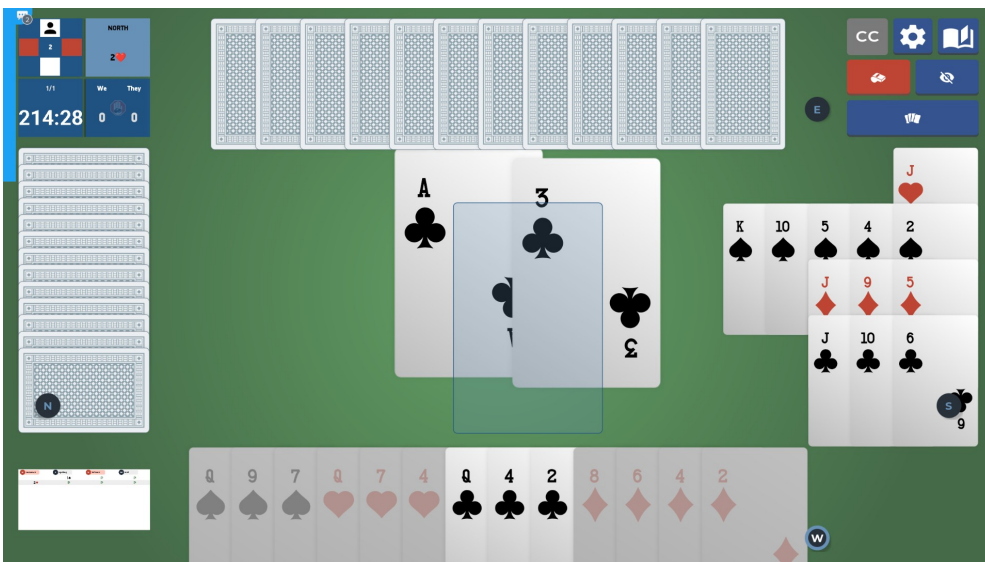
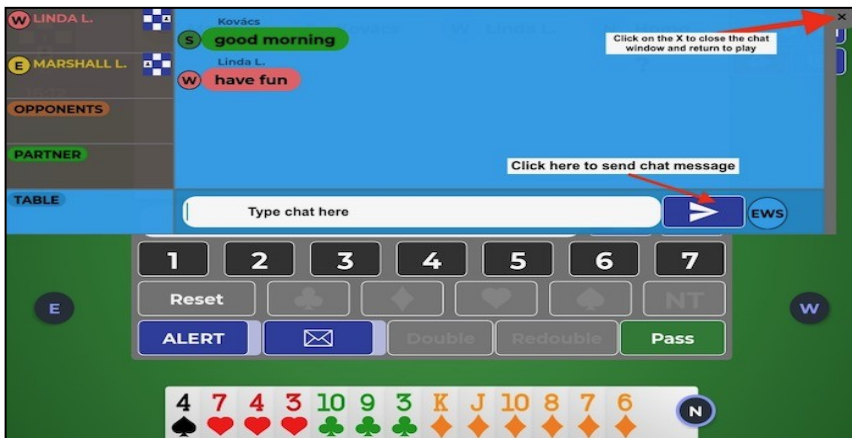
(continued on page 29)

\*\*\*Another change the LoveBridge people made at our request was to make the chat more user-friendly:

When someone chats to you, their chat shows briefly in a bubble in the top left hand square:



If you want to open the chat window and respond to chat (or initiate a chat), click on the bubble with the 3 dots at the upper left of the screen and then type into the chat box, which looks like this:



**Look  
on a  
Chromebook**



# On the Subject of Bridge...

On April 16th, Ralph Katz and Nick Nickell were practicing online again teammates, Bobbie Levin and Eric Greco. The team plays a serious game in practice with one exception: WISH TRICKS MATTER! On this Tuesday night, in an interesting happenstance, this hand came up:

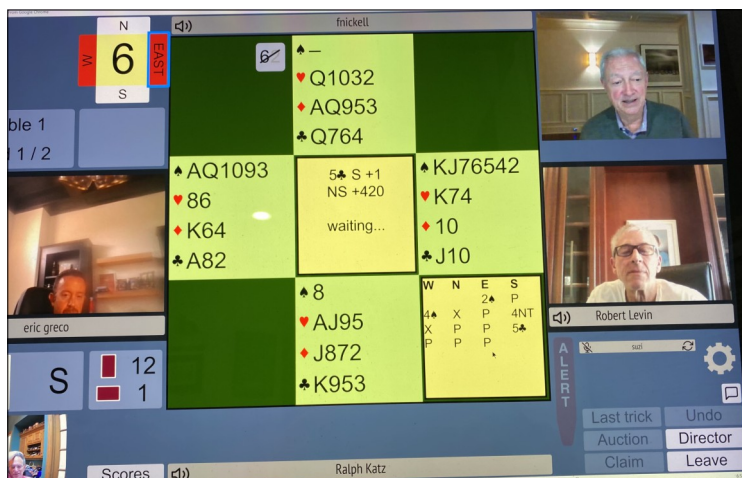
♠ K1073	♠ Q62
♥ J76	♥ Q9843
♦ 83	♦ AKJ9
♣ KJ82	♣ 4
♠ AJ85	♠ 94
♥ 1052	♥ AK
♦ 752	♦ Q1064
♣ Q93	♣ A10765

As played, Katz/Nickell bid 2C and took ten tricks, the best possible result for their side according to the Double Dummy. From the standpoint of the kibitzer (me), it was simply a commonplace part-score with one exception: looking at the spots in all four hands, there were **THREE Wish Tricks** available: one in spades, one in diamonds and one in clubs! That's pretty unusual!

Note: The wish trick in hearts came up on the next hand! →

♠ 986	♥ 10	♦ 9742	♣ Q64
♠ AJ7	♥ KQ95	♦ 53	♣ AK
♠ KQ105	♥ J	♦ AQ1086	♣ J
♠ 432	♥ 876	♦ KJ	♣ 873

Later in the evening, on Board 6, Greco/Levin held 12 spades between them and might have been tempted to save at favorable, however, at unfavorable, they wisely jumped to game, making Katz/Nickell guess at a high level what to do, then give in when Nickell/Katz stopped in 5C (as opposed to 6D or 6H which were cold!).



The lie of the cards is incredibly friendly to allow the red suit slams to succeed. 6C is the only possible slam that can be defeated and that takes the lead of a diamond so West can win the trump ace and give their partner a ruff. 5C could have been held to 11 winners but Greco led the obvious SA and Katz took 12 tricks. Would Greco have found the diamond lead had Katz/Nickell bid 6C? Not likely!

At the end of the hand, Nick, jokingly asked, "Did we miss another cold slam, Pard?"

The Nickell team exudes camaraderie and these practice sessions on Real-Bridge are great for team bonding!!

If you haven't heard the Katz/Nickell interview on U-Tube, you should. You will appreciate the great friendship and respect these guys have for one another. They are great role models for the game!

Board 6 Dealer E EW Vul		♠ -	♥ Q1032	♦ AQ953	♣ Q764
♠ AQ1093	♥ 86	♦ K64	♣ A82	♠ KJ76542	♥ K74
♠ 8	♥ AJ95	♦ J872	♣ K953	♦ 10	♣ J10
NS		EW		Contract	
fnickell & Ralph Katz		Robert Levin & eric greco		5♣+1 S	
Lead		Score		MP	
♠ A		420		0 0	