

Volume 8, Issue 3
May 18, 2017

Results:

Team Name	Total	1	9	5	2	6	8	4	3	7	1
1. <u>Hamman, NPC</u>	82.55		2.97			18.09	13.28	15.50		14.46	18
9. <u>Cappelli</u>	75.43	17.03		13.59			10.00	7.37	17.03	10.41	
5. <u>Mahaffey</u>	74.31		6.41				13.59	7.04	15.74	13.28	18
2. <u>Wolfson</u>	71.51					9.19	11.20	12.29	4.03	18.83	15
6. <u>Lewis</u>	67.17	1.91			10.81			9.19	15.26	15.00	15
8. <u>Pollack</u>	58.80	6.72	10.00	6.41	8.80			13.59	13.28		
4. <u>Gupta</u>	55.02	4.50	12.63	12.96	7.71	10.81	6.41				
3. <u>Wold</u>	48.25		2.97	4.26	15.97	4.74	6.72				13
7. <u>Falk</u>	42.48	5.54	9.59	6.72	1.17	5.00					14
10. <u>Reynolds</u>	24.48	1.75		1.75	4.03	5.00			6.41	5.54	

USBF President

Marty Fleisher

USBF

Vice President

Josh Parker

USBF COO & Secretary

Jan Martel

USBF CFO

Stan Subeck

Directors - USBC

McKenzie Myers

Gary Zeiger

Operations Manager

McKenzie Myers

Appeals Administrators

Suzi Subeck, Chairman

Bill Arlinghaus

Martha Katz

Appeals Panel:

David Berkowitz

Huub Bertens

Bart Bramley

Tom Carmichael

Gary Cohler

Ish Del Monte

Mark Feldman

Ron Gerard

Fred Gitelman

Bob Hamman

Geoff Hampson

Mike Kamil

Ralph Katz

Oren Kriegel

Chip Martel

Beth Palmer

Pepsi Pszczola

Eric Rodwell

Debbie Rosenberg

Michael Rosenberg

Kerri Sanborn

Aaron Silverstein

Danny Sprung

Lew Stansby

Adam Wildavsky

VuGraph Organizer

Jan Martel

Bulletin Editor

Suzi Subeck

Photographer

Peg Kaplan

Local Hospitality Chairs

Susie Miller

Lisa Berkowitz

Martha Katz

Margin	Winner	Loser	Margin	Winner	Loser	Margin	Winner	Loser
0	10	10	16	15.26	4.74	31	18.25	1.75
1	10.41	9.59	17	15.50	4.50	32	18.40	1.60
2	10.81	9.19	18	15.74	4.26	33	18.55	1.45
3	11.20	8.80	19	15.97	4.03	34	18.69	1.31
4	11.58	8.42	20	16.20	3.80	35	18.83	1.17
5	11.94	8.06	21	16.42	3.58	36	18.97	1.03
6	12.29	7.71	22	16.63	3.37	37	19.10	0.90
7	12.63	7.37	23	16.83	3.17	38	19.22	0.78
8	12.96	7.04	24	17.03	2.97	39	19.34	0.66
9	13.28	6.72	25	17.22	2.78	40	19.46	0.54
10	13.59	6.41	26	17.41	2.59	41	19.58	0.42
11	13.89	6.11	27	17.59	2.41	42	19.69	0.31
12	14.18	5.82	28	17.76	2.24	43	19.80	0.20
13	14.46	5.54	29	17.93	2.07	44	19.90	0.10
14	14.74	5.26	30	18.09	1.91	45	20	0
15	15.00	5.00						

USBF 9 Board VP Scale

Good Luck Today!

UNITED STATES BRIDGE CHAMPIONSHIPS

Old Times — the official newsletter
of the USSBC

2017 USSBC Teams

listed in seeding point order

Hamman, NPC	Hemant Lall Zia Mahmood Robert Hamman	Reese Milner Steve Garner Bart Bramley
Wolfson	Jeffrey Wolfson, Capt David Berkowitz Michael Becker	Neil Silverman Alan Sontag Allan Graves
Wold	Eddie Wold, Capt Marc Jacobus Dennis Clerkin	Michael Levine Mike Passell Jerry Clerkin
Gupta	Vinita Gupta, Capt Kit Woolsey Steve Robinson	Billy Miller Fred Stewart Peter Boyd
Mahaffey	Jim Mahaffey, Capt Neil Chambers Matthew Granovetter	Sam Lev John Schermer Roger Bates
Lewis	Paul Lewis, Capt Jim Krekorian	Linda Lewis Drew Casen Mark Itabashi
Falk	Allan Falk, Capt Doug Simson Glenn Eisenstein	Jeff Aker John Lusky John Rengstorff
Pollack	Bill Pollack, Capt Mark Feldman Larry Robbins	Ron Rubin Mark Cohen Steve Beatty
Cappelli	Robert Cappelli, Capt David Caprera	Robert Bitterman Anne Brenner
Reynolds	W. Thomas Reynolds, Capt William Hall Sally Woolsey	Lance Kerr Brenda Jacobus

If you can't do it,
give up!

Sigmund Freud



This team made a great run, pushing the Nickell team to the limit. Front: Brian Glubok holding son Brian Pearce Glubok, one of ACBL's newest members, and George Jacobs; back, from left, Sam Lev, Ralph Katz and Howard Weinstein.

From the days before any of them were eligible for the Senior Trials!!

Katz now on the Nickell team... would have been in these Trials had he not won the berth for USA1 in the Open last week!

Lev and Jacobs played in the Open Trials... but are skipping the Senior event this year.

Kind of a blast from the past!

<i>ROUND ROBIN</i>			
<i>DAY</i>	<i>DATE</i>	<i>TIME</i>	<i>BOARDS</i>
WEDNESDAY	MAY 17	9:45 AM	CAPTAINS' MEETING IN ROOM 1321
WEDNESDAY	MAY 17	10:00 - 11:20 11:30 - 12:50 1:00 - 2:20 3:45 - 5:05 5:15 - 6:35 6:45 - 8:10	BOARDS 1 - 9 BOARDS 10 - 18 BOARDS 19 - 27 85 MINUTE LUNCH BREAK BOARDS 1 - 9 BOARDS 10 - 18 BOARDS 19 - 27
THURSDAY	MAY 18	10:00 - 11:20 11:30 - 12:50 1:00 - 2:20	BOARDS 1 - 9 BOARDS 10 - 18 BOARDS 19 - 27 100 MINUTE LUNCH BREAK
* THE FINAL 2 MATCHES ARE SEQUESTERED - ONE PAIR ON EACH TEAM MUST PLAY BOTH MATCHES & MUST REMAIN IN THE CLOSED ROOM FOR BOTH MATCHES. NO SCORE COMPARISON ALLOWED.			
<i>QUARTERFINAL & USA2 ROUND OF 32 (KO ON SAME SCHEDULE)</i>			
THURSDAY	MAY 18	4:00 - 6:10 6:20 - 8:30	SEGMENT 1 BOARDS 1-15 SEGMENT 2 BOARDS 16-30
FRIDAY	MAY 19	10:00 - 12:10 12:25 - 2:35 3:45 - 5:55 6:10 - 8:20	SEGMENT 3 BOARDS 1-15 SEGMENT 4 BOARDS 16-30 70 MINUTE LUNCH BREAK SEGMENT 5 BOARDS 1-15 SEGMENT 6 BOARDS 16-30
<i>SEMIFINAL & USA2 ROUND OF 16 (SCHEDULE SOON)</i>			
SATURDAY	MAY 20	10:00 - 12:10 12:25 - 2:35 3:45 - 5:55 6:10 - 8:20	SEGMENT 1 BOARDS 1-15 SEGMENT 2 BOARDS 16-30 70 MINUTE LUNCH BREAK SEGMENT 3 BOARDS 1-15 SEGMENT 4 BOARDS 16-30
SUNDAY	MAY 21	10:00 - 12:10 12:25 - 2:35	SEGMENT 5 BOARDS 1-15 SEGMENT 6 BOARDS 16-30 95 MINUTE LUNCH BREAK
<i>FINAL & USA2 QUARTERFINAL (6 USA2 TEAMS)</i>			
SUNDAY	MAY 21	4:00 - 6:10 6:20 - 8:30	SEGMENT 1 BOARDS 1-15 SEGMENT 2 BOARDS 16-30
MONDAY	MAY 22	10:00 - 12:10 12:25 - 2:35 3:45 - 5:55 6:10 - 8:20	SEGMENT 3 BOARDS 1-15 SEGMENT 4 BOARDS 16-30 70 MINUTE LUNCH BREAK SEGMENT 5 BOARDS 1-15 SEGMENT 6 BOARDS 16-30
<i>USA2 SEMIFINAL</i>			
TUESDAY	MAY 23	10:00 - 12:10 12:25 - 2:35 3:45 - 5:55 6:10 - 8:20	SEGMENT 1 BOARDS 1-15 SEGMENT 2 BOARDS 16-30 70 MINUTE LUNCH BREAK SEGMENT 3 BOARDS 1-15 SEGMENT 4 BOARDS 16-30
WEDNESDAY	MAY 24	10:00 - 12:10 12:25 - 2:35	SEGMENT 5 BOARDS 1-15 SEGMENT 6 BOARDS 16-30 95 MINUTE LUNCH BREAK
<i>USA2 FINAL</i>			
WEDNESDAY	MAY 24	4:00 - 6:10 6:20 - 8:30	SEGMENT 1 BOARDS 1-15 SEGMENT 2 BOARDS 16-30
THURSDAY	MAY 25	10:00 - 12:10 12:25 - 2:35 3:45 - 5:55 6:10 - 8:20	SEGMENT 3 BOARDS 1-15 SEGMENT 4 BOARDS 16-30 70 MINUTE LUNCH BREAK SEGMENT 5 BOARDS 1-15 SEGMENT 6 BOARDS 16-30

Tournament Schedule

Hospitality Suite

The hospitality suite for the 2017 Senior USBC is Suite 2321, on the level above the playing rooms. Players, volunteers, kibitzers, friends and supporters are welcome in the Hospitality Suite during the tournament. Please join hostesses Susie Miller, Lisa Berkowitz & Martha Katz for:

Breakfast each day from 8:00-10:30 am.

Lunch Friday through Tuesday from 1:30-4:00.

Wednesday & Thursday, lunch will be a buffet served in the hotel restaurant.

The Hospitality Suite will be open for Vugraph, casual chit chat, drinks & snacks during the rest of the playing hours and for a short time after the end of play each day.

The Players' Lounge (room 1321) will also be open throughout the tournament. We will have coffee and snacks there during play.



ALERT!
On many of the boards,
cards slide between pockets
when being carried.
Please count
your cards on
every hand!

No Electronic Devices are Permitted in the Playing Area.

This applies to players AND kibitzers.

Severe penalties will be assessed for violation of this rule.

Please turn off all cell phones and check them at the door.

The USBF reserves the right to wand anyone entering the playing field.



George and Edith had been high school sweethearts 50 years ago, but had gone their separate ways after graduation. Then, two years ago, their paths crossed again, and they began seeing each other regularly.

With age 75 just around the corner, they decided life was too short, and they might as well spend the rest of their lives together.

Excited about their decision to marry, they went for a stroll to discuss the wedding, and found themselves in front of a drugstore. George said, "Let's go in. I have an idea."

Addressing the man behind the counter, George asked, "Are you the owner?" The pharmacist answered, "Yes sir, I am. How can I help you?"

George: "Do you sell heart medications?"

Pharmacist: "Of course."

George: "How about support hose?"

Pharmacist: "Definitely."

George: "What about medications for rheumatism, osteoporosis and arthritis?"

Pharmacist: "All kinds."

George: "How about waterproof furniture pads and Depends?"

Pharmacist: "Yes, sir."

George: "Hearing aids, denture supplies and reading glasses?"

Pharmacist: "Yes."

George: "What about eye drops, sleeping pills, Geritol, Preparation-H and Ex-Lax?"

Pharmacist: "Absolutely."

George: "You sell wheelchairs, walkers and canes?"

Pharmacist: "Yes, indeed. But why all these questions?"

George smiled, glanced shyly at Edith and replied, "We've decided to get married and we're considering you for our bridal registry."

While waiting for her first appointment in the reception room of a new doctor, a woman noticed the doctor's medical school certificate on the wall, which bore his full name.

Suddenly, she remembered that a tall, handsome boy with the same name had been in her high school some 45 years ago.

Upon seeing him, however, she quickly discarded any such thought. This balding, gray-haired man with the deeply lined face was too old to have been her classmate.

After her exam, she asked him if he had attended the local high school.

"Yes," he replied.

"When did you graduate?" she asked

He answered, "In 1965."

"Why, you were in my class!" she exclaimed.

He looked at her closely and then asked, "What did you teach?"

				9	3	7	5
4	2		1				
			4				
					8		7
	1				5		
8		4		3			
						3	1
		2	3			9	
	6	7					

1							
	3		8				
		8	3	7	9		
	4						9
				3		7	6
			5		6		
4			1				
					8	9	7
		2			4		8

A woman has twins and gives them up for adoption.

One of them goes to a family in Egypt and is named Amal. The other goes to a family in Spain. They name him Juan.

Years later, Juan sends a picture of himself to his birth mother. Upon receiving the picture, she tells her husband that she wishes she also had a picture of Amal.

He responds, "They're twins! If you've seen Juan, you've seen Amal."

Medium Sudoku

Answers to Puzzle No Peeking!

Top

3	6	7	8	1	9	4	2	5
1	5	2	3	6	4	9	8	7
9	4	8	5	7	2	6	3	1
8	9	4	7	3	1	5	6	2
7	1	6	9	2	5	3	4	8
2	3	5	6	4	8	1	7	9
5	7	9	4	8	6	2	1	3
4	2	3	1	5	7	8	9	6
6	8	1	2	9	3	7	5	4

Bottom

6	9	2	7	5	4	1	3	8
5	1	3	6	2	8	9	4	7
4	8	7	1	9	3	6	2	5
9	7	1	5	4	6	3	8	2
8	2	5	9	3	1	7	6	4
3	4	6	2	8	7	5	1	9
2	6	8	3	7	9	4	5	1
7	3	4	8	1	5	2	9	6
1	5	9	4	6	2	8	7	3

Puzzle Page ...

Last night's baseball game was great! Both teams played very well with first one team, then the other in the lead. While both teams had many hits during the game, there were five that were particularly spectacular and which allowed their team to score runs. Oddly, each star hitter played a different defensive position, and each drove in runs with a different hit. Determine the full name of each batter, the defensive position each played, the total number of hits each had for the night (from 3 to 5), and what type of hit each got that allowed their team to score runs.

1. Dan, whose last name wasn't Kelly, didn't play center field. Mr. Payne, who didn't play first base, didn't get five hits for the night. Mr. Kelly was the catcher, but he didn't hit a home run.
2. The two players that got four hits were the player that hit the grand slam and Mr. Brass.
3. Rich White didn't hit a triple. Cody's last name wasn't Elliot. Dan hit a single.
4. The shortstop got five hits for the night but didn't hit the home run. The center field player hit a triple.
5. Mark, whose last name wasn't Elliot, played second base. Bill, whose last name wasn't Kelly, didn't hit a home run.
6. The player whose position was at first base hit a double, but he didn't get four hits for the night. Bill, who wasn't the shortstop, didn't get three hits.

	Brass	Elliot	Kelly	Payne	White	catcher	center field	first base	second base	shortstop	3	3	4	4	5	single	double	triple	home run	grand slam	
Bill																					
Dan																					
Cody																					
Mark																					
Rich																					
single																					
double																					
triple																					
home run																					
grand slam																					
3																					
3																					
4																					
4																					
5																					
catcher																					
center field																					
first base																					
second base																					
shortstop																					




**Puzzle
Answer:**

First Name	Last Name	Position Played	# of Hits	Scoring Hit
Rich	White	first base	3	double
Mark	Payne	second base	3	home run
Cody	Kelly	catcher	4	grand slam
Dan	Elliot	shortstop	5	single
Bill	Brass	center field	4	triple

Hands from the Round Robin

Board 24 ♠ QT
 Dealer: W ♥ QJ874
 None Vul. ♦
 Match 3 ♣ AKQT62

♠ AKJ96
 ♥ AK952
 ♦ K
 ♣ 94



♠ 2
 ♥ T
 ♦ AQJT742
 ♣ J753

♠ 87543
 ♥ 63
 ♦ 98653
 ♣ 8

West	North	East	South
Casen	Milner	Krekorian	Lall
1S	2S (Michaels)	3C (transfer to ♦)	Pass
3H	4C	5D	Double
All Pass			

What an unlucky hand!

Lall led his C8. Milner won the queen. Milner cashed the CK and played the CA. Declarer followed; Lall pitched a heart; dummy was forced to ruff with the singleton king of trump.

Krekorian was running out of hope. Once North turned up with all the high clubs; East with the high spades and high hearts, it was only logical that South held a huge trump stack for his double. While it would take a 5-0 trump split to defeat the game, it was looking more and more like that was the case. Krekorian cashed the SA and ruffed a small spade in hand. The DA followed revealing the position.

Krekorian cashed the SA and ruffed a small spade in hand. The DA followed revealing the position.

It turns out that 3NT makes. On a club lead, North can cash two rounds of clubs and play the HQ in an effort to exit his hand. If the declarer reads the position correctly, he ducks the HQ. Now a heart continuation will guarantee nine tricks. A spade shift will also allow the contract to come home, as will cashing the CQ. According to the analysis on the hand record, N/S can make all of 1C. As it turns out, the winning bid for E/W over 4C is double!

Board 14 ♠ KT87
 Dealer: E ♥ KJT42
 None Vul. ♦ KJ2
 Match 2 ♣ T

♠ 954
 ♥ Q98763
 ♦ 943
 ♣ 8



♠ A32
 ♥ 5
 ♦ AQ65
 ♣ J9532

♠ QJ6
 ♥ A
 ♦ T87
 ♣ AKQ764

Assume you are North playing in 3NT on Board 14 after East opened 1D and partner overcalled in clubs. East leads a small spade. What is the BEST line of play?

Obviously if clubs are 3-3, there is nothing to the hand. It seems best to not tackle clubs early in an effort to score 3 spades, 2 heart, and AKQ of clubs plus one diamond. The first reaction was to play back an immediate spade. The problem occurs if LHO wins the spade and returns a spade cutting your communication before you have untangled the heart suit.

If this happens, you can now cash the last spade and play a club to the ace. Next, test the clubs. When RHO shows out on the 2nd round of clubs, you know the pattern of LHO's hand. He has 3 spades, one heart, 4 diamonds and 5 clubs.

You cash the HA and the CQ. Exit with a club. LHO will cash his remaining high clubs, but find himself endplayed.

You hold the diamond king/jack and the heart king. LHO must put you in your hand with diamonds and you claim nine tricks.

Is this line of play clear? Maybe not... but it is successful!

The hand can be made on other lines, but determining the safest is key.

Board 11 ♠ 976
 Dealer: S ♥ K432
 None Vul. ♦ K765
 Match 5 ♣ KT

♠ Q82
 ♥ QT986
 ♦ AQT2
 ♣ 7



♠ AKJ
 ♥ A
 ♦ 83
 ♣ J986543

♠ T543
 ♥ J75
 ♦ J94
 ♣ AQ2

West	North	East	South
Passell	Wolfson	M Jacobus	Silverman
			Pass
1H	Pass	2C	Pass
2D	Pass	2NT	Pass
3NT	All Pass		

Neil Silverman and Jeff Wolfson combined for a nice defense to defeat 3NT. Rather than leading a passive spade, Silverman started with the DJ. This was covered by the queen and Wolfson won the king.

Wolfson now played the CK, and when this held, he switched to a spade. Declarer won and played a second round of clubs. Silverman won this trick and made the key switch to the H5. Declarer played the ten from dummy and Wolfson cooperated by playing the H2, catching declarer's singleton ace. When declarer played a third round of clubs, Silverman won and led a heart to Wolfson's

king as the setting trick.

Silverman pointed out that his logic was that even if declarer did not hold the singleton ace, he might guess wrong on the shift to a heart.

Board 14 ♠ AJ73
 Dealer: E ♥ AKQ7
 None Vul. ♦
 Match 5 ♣ AQT74

♠ Q8
 ♥ T632
 ♦ T7532
 ♣ J3



♠ 65
 ♥ J9
 ♦ AQ964
 ♣ K982

♠ KT942
 ♥ 854
 ♦ KJ8
 ♣ 65

Passell	Wolfson	M Jacobus	Silverman
		1D (could be 2)	Pass
1H	Double	Pass	2S
Pass	6S	All Pass	

Jeff Wolfson was faced with a difficult problem after his partner jumped to 2S in response to his T/O double. He doesn't need much from partner and it's going to be very hard to explore scientifically. Even if partner has wasted diamond values, slam could be cold when his partner has as little as king fifth of spades and the CJ. Indeed, Silverman held the requisite Kxxxx of spades and the doubleton club was as good as the jack!

The opening lead was the CJ. Silverman rose with the ace, cashed the SA, and played a spade. He was at the crossroads. RHO had opened the bidding and LHO had responded. Who held the SQ???

After long thought, he inserted the ten and lost to Passell's doubleton queen. Should he have gotten it right? In the modern strong club style, nebulous 1D openers may be very light and partner stretches to respond on almost anything. Since the CJ appears to be from shortness, it is probably wrong to play the opening leader for a singleton spade. Playing the SK could be successful if the hearts were 3-3 so that declarer could discard his second club on the long heart while East ruffed with his winning trump.

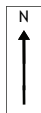
Slam down one!

In response to member feedback, the ACBL will not be returning to the Walt Disney World Swan and Dolphin Resort, site of the 2016 Fall North American Bridge Championships, in 2022. We have started the continent-wide search for a venue for the Fall 2022 NABC that better suits our members' needs.

Board 18
 Dealer: E
 N/S Vul.

- ♠ J8
- ♥ KQ654
- ♦ AQ2
- ♣ AK3

- ♠ 974
- ♥ AT97
- ♦ T
- ♣ JT852



- ♠ AQ53
- ♥ 82
- ♦ KJ73
- ♣ 764

- ♠ KT62
- ♥ J3
- ♦ 98654
- ♣ Q9

West	North	East	South
Passell	Wolfson	M Jacobus	Silverman
		1D (could be 2)	Pass
1H	1NT	All Pass	

Three boards later, on Board 18, it was déjà vu all over again! The opps opened the nebulous diamond and Wolfson holds another monster. This time Wolfson took a conservative view and didn't make an off shape double.

Had he doubled, his partner would have responded 1S. Wolfson would have rebid 1NT and when Silverman raised, they would have reached the game.

There has been much discussion concerning how effective it is to open a nebulous diamond and respond on most anything. Boards 14 and 18 show how true this is.



Game Faces



Glenn in the breakroom... captions?



Annie looks like she found the squeeze!



Brenda explains to Sally: I'm not Kit. You can raise my preempts!